

KLHDC1 Antibody (N-term)
Affinity Purified Rabbit Polyclonal Antibody (Pab)
Catalog # AP10855A**Specification**

KLHDC1 Antibody (N-term) - Product Information

Application	WB, IHC-P,E
Primary Accession	Q8N7A1
Other Accession	Q80YG3 , NP_751943.1
Reactivity	Human, Mouse
Host	Rabbit
Clonality	Polyclonal
Isotype	Rabbit IgG
Antigen Region	69-97

KLHDC1 Antibody (N-term) - Additional Information**Gene ID** 122773**Other Names**

Kelch domain-containing protein 1, KLHDC1

Target/Specificity

This KLHDC1 antibody is generated from rabbits immunized with a KLH conjugated synthetic peptide between 69-97 amino acids from the N-terminal region of human KLHDC1.

Dilution

WB~~1:1000

IHC-P~~1:50~100

Format

Purified polyclonal antibody supplied in PBS with 0.09% (W/V) sodium azide. This antibody is purified through a protein A column, followed by peptide affinity purification.

Storage

Maintain refrigerated at 2-8°C for up to 2 weeks. For long term storage store at -20°C in small aliquots to prevent freeze-thaw cycles.

Precautions

KLHDC1 Antibody (N-term) is for research use only and not for use in diagnostic or therapeutic procedures.

KLHDC1 Antibody (N-term) - Protein Information**Name** KLHDC1 {ECO:0000303|PubMed:16964437, ECO:0000312|HGNC:HGNC:19836}**Function** Substrate-recognition component of a Cul5-RING (CRL5) E3 ubiquitin-protein ligase complex of the DesCEND (destruction via C-end degrons) pathway, which recognizes a C-degron

located at the extreme C terminus of target proteins, leading to their ubiquitination and degradation (PubMed:[32200094](#)). The C-degron recognized by the DesCEND pathway is usually a motif of less than ten residues and can be present in full-length proteins, truncated proteins or proteolytically cleaved forms (PubMed:[32200094](#)). The CRL5(KLHDC1) complex mediates ubiquitination and degradation of truncated SELENOS selenoprotein produced by failed UGA/Sec decoding, which ends with a glycine (PubMed:[32200094](#)).

Cellular Location

Cytoplasm, cytosol

Tissue Location

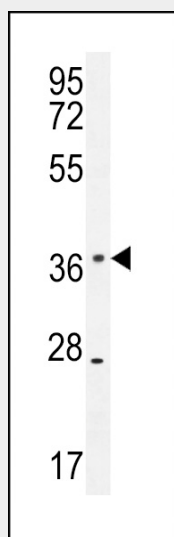
Widely expressed, with high levels in skeletal muscle, pancreas and liver. Undetectable in peripheral blood leukocytes.

KLHDC1 Antibody (N-term) - Protocols

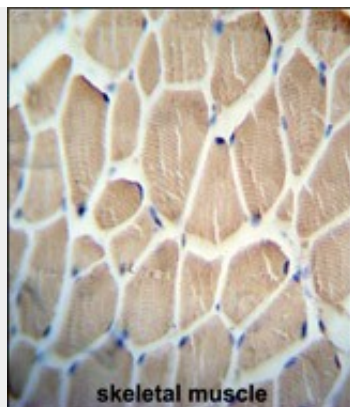
Provided below are standard protocols that you may find useful for product applications.

- [Western Blot](#)
- [Blocking Peptides](#)
- [Dot Blot](#)
- [Immunohistochemistry](#)
- [Immunofluorescence](#)
- [Immunoprecipitation](#)
- [Flow Cytometry](#)
- [Cell Culture](#)

KLHDC1 Antibody (N-term) - Images



KLHDC1 Antibody (N-term) (Cat. #AP10855a) western blot analysis in mouse spleen tissue lysates (35ug/lane). This demonstrates the KLHDC1 antibody detected the KLHDC1 protein (arrow).



KLHDC1 antibody (N-term) (Cat. #AP10855a) immunohistochemistry analysis in formalin fixed and paraffin embedded human skeletal muscle followed by peroxidase conjugation of the secondary antibody and DAB staining. This data demonstrates the use of the KLHDC1 antibody (N-term) for immunohistochemistry. Clinical relevance has not been evaluated.

KLHDC1 Antibody (N-term) - Background

KLHDC1 contains 6 Kelch repeats and is widely expressed, with high levels in skeletal muscle, pancreas and liver. KLHDC1 and KLHDC2 have differential localization and activity in cultured mammalian cells. The exact function of KLHDC1 remains unknown.

KLHDC1 Antibody (N-term) - References

Feng, T., et al. Hum. Genet. 128(3):269-280(2010)
Chin, K.T., et al. Mol. Cell. Biochem. 296 (1-2), 109-119 (2007) :