

DPY19L1 Antibody (C-term)
Affinity Purified Rabbit Polyclonal Antibody (Pab)
Catalog # AP10859b

Specification

DPY19L1 Antibody (C-term) - Product Information

Application	WB, IHC-P, FC,E
Primary Accession	Q2PZ11
Other Accession	A6X919 , NP_056098.1 , D4AD75
Reactivity	Human
Predicted	Mouse, Rat
Host	Rabbit
Clonality	Polyclonal
Isotype	Rabbit IgG
Antigen Region	557-586

DPY19L1 Antibody (C-term) - Additional Information

Gene ID 23333

Other Names

Probable C-mannosyltransferase DPY19L1, 241-, Dpy-19-like protein 1, Protein dpy-19 homolog 1, DPY19L1, GA0500, KIAA0877

Target/Specificity

This DPY19L1 antibody is generated from rabbits immunized with a KLH conjugated synthetic peptide between 557-586 amino acids from the C-terminal region of human DPY19L1.

Dilution

WB~~1:1000
IHC-P~~1:50~100
FC~~1:10~50

Format

Purified polyclonal antibody supplied in PBS with 0.09% (W/V) sodium azide. This antibody is purified through a protein A column, followed by peptide affinity purification.

Storage

Maintain refrigerated at 2-8°C for up to 2 weeks. For long term storage store at -20°C in small aliquots to prevent freeze-thaw cycles.

Precautions

DPY19L1 Antibody (C-term) is for research use only and not for use in diagnostic or therapeutic procedures.

DPY19L1 Antibody (C-term) - Protein Information

Name DPY19L1

Synonyms GA0500, KIAA0877

Function C-mannosyltransferase that mediates the C-mannosylation tryptophan residues on target proteins. The reaction occurs on the luminal side of the endoplasmic reticulum and involves the transfer of a mannose unit from a dolichylphosphate mannose (Dol-P-Man) donor to an acceptor protein containing a WxxW consensus sequence (By similarity). C-mannosylates the first two tryptophans in the WxxWxxWxxC motif in thrombospondin (TSP) type-1 of UNC5A (By similarity). Regulates neurite extension during development (By similarity).

Cellular Location

Endoplasmic reticulum membrane {ECO:0000250|UniProtKB:A6X919}; Multi-pass membrane protein

Tissue Location

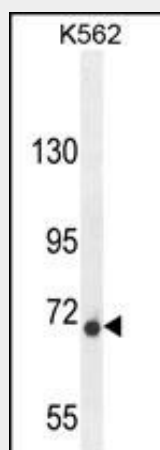
Widely expressed..

DPY19L1 Antibody (C-term) - Protocols

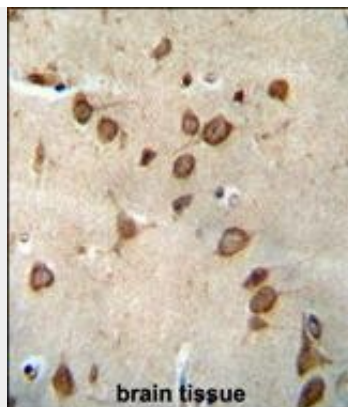
Provided below are standard protocols that you may find useful for product applications.

- [Western Blot](#)
- [Blocking Peptides](#)
- [Dot Blot](#)
- [Immunohistochemistry](#)
- [Immunofluorescence](#)
- [Immunoprecipitation](#)
- [Flow Cytometry](#)
- [Cell Culture](#)

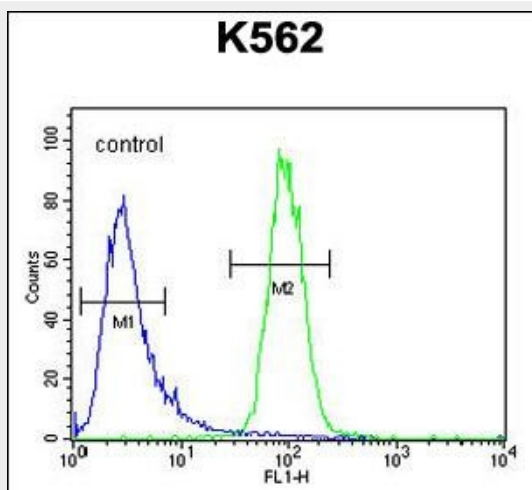
DPY19L1 Antibody (C-term) - Images



DPY19L1 Antibody (C-term) (Cat. #AP10859b) western blot analysis in K562 cell line lysates (35ug/lane). This demonstrates the DPY19L1 antibody detected the DPY19L1 protein (arrow).



DPY19L1 antibody (C-term) (Cat. #AP10859b) immunohistochemistry analysis in formalin fixed and paraffin embedded human brain tissue followed by peroxidase conjugation of the secondary antibody and DAB staining. This data demonstrates the use of the DPY19L1 antibody (C-term) for immunohistochemistry. Clinical relevance has not been evaluated.



DPY19L1 Antibody (C-term) (Cat. #AP10859b) flow cytometric analysis of K562 cells (right histogram) compared to a negative control cell (left histogram). FITC-conjugated goat-anti-rabbit secondary antibodies were used for the analysis.

DPY19L1 Antibody (C-term) - Background

Belongs to the DPY19 family. There are two named isoforms. The specific function of DPY19L1 is not yet known.

DPY19L1 Antibody (C-term) - References

Strausberg, R.L., et al. Proc. Natl. Acad. Sci. U.S.A. 99(26):16899-16903(2002)
Nagase, T., et al. DNA Res. 5(6):355-364(1998)

DPY19L1 Antibody (C-term) - Citations

- [Endoplasmic Reticulum-Localized Transmembrane Protein Dpy19L1 Is Required for Neurite Outgrowth.](#)