

WDR41 Antibody (C-term)
Affinity Purified Rabbit Polyclonal Antibody (Pab)
Catalog # AP10866B

Specification

WDR41 Antibody (C-term) - Product Information

Application	WB, IHC-P,E
Primary Accession	O9HAD4
Other Accession	NP_060738.2
Reactivity	Human, Mouse
Host	Rabbit
Clonality	Polyclonal
Isotype	Rabbit IgG
Calculated MW	51728
Antigen Region	249-277

WDR41 Antibody (C-term) - Additional Information

Gene ID 55255

Other Names

WD repeat-containing protein 41, WDR41

Target/Specificity

This WDR41 antibody is generated from rabbits immunized with a KLH conjugated synthetic peptide between 249-277 amino acids from the C-terminal region of human WDR41.

Dilution

WB~~1:1000

IHC-P~~1:100

Format

Purified polyclonal antibody supplied in PBS with 0.09% (W/V) sodium azide. This antibody is purified through a protein A column, followed by peptide affinity purification.

Storage

Maintain refrigerated at 2-8°C for up to 2 weeks. For long term storage store at -20°C in small aliquots to prevent freeze-thaw cycles.

Precautions

WDR41 Antibody (C-term) is for research use only and not for use in diagnostic or therapeutic procedures.

WDR41 Antibody (C-term) - Protein Information

Name WDR41 ([HGNC:25601](#))

Function Non-catalytic component of the C9orf72-SMCR8 complex, a complex that has guanine

nucleotide exchange factor (GEF) activity and regulates autophagy (PubMed:[27193190](#), PubMed:[27103069](#), PubMed:[27617292](#), PubMed:[28195531](#)). The C9orf72-SMCR8 complex promotes the exchange of GDP to GTP, converting inactive GDP-bound RAB8A and RAB39B into their active GTP-bound form, thereby promoting autophagosome maturation (PubMed:[27103069](#)). As part of the C9orf72-SMCR8 complex, stimulates RAB8A and RAB11A GTPase activity in vitro, however WDR42 is shown not be an essential complex component for this function (PubMed:[32303654](#)). The C9orf72-SMCR8 complex also acts as a negative regulator of autophagy initiation by interacting with the ULK1/ATG1 kinase complex and inhibiting its protein kinase activity (PubMed:[27103069](#), PubMed:[27617292](#)).

Cellular Location

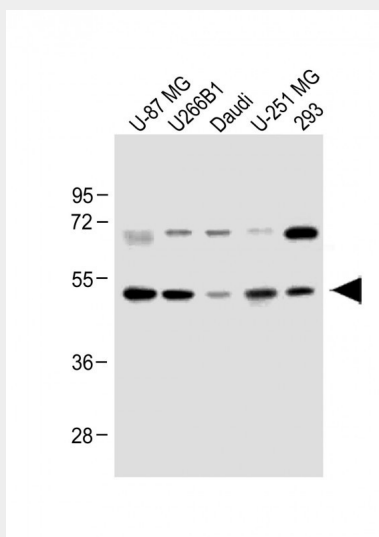
Cytoplasm.

WDR41 Antibody (C-term) - Protocols

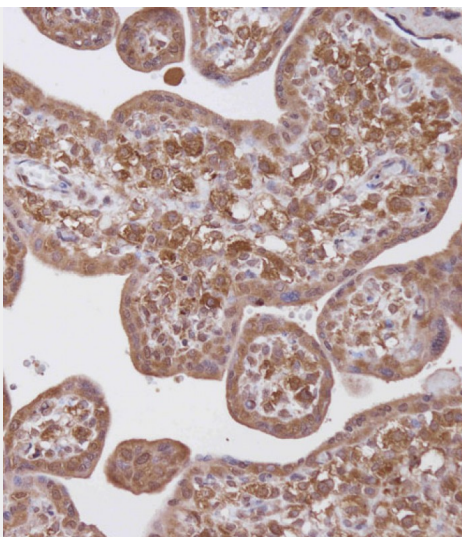
Provided below are standard protocols that you may find useful for product applications.

- [Western Blot](#)
- [Blocking Peptides](#)
- [Dot Blot](#)
- [Immunohistochemistry](#)
- [Immunofluorescence](#)
- [Immunoprecipitation](#)
- [Flow Cytometry](#)
- [Cell Culture](#)

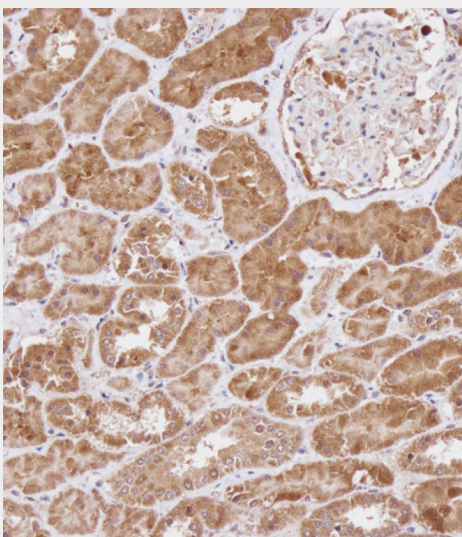
WDR41 Antibody (C-term) - Images



All lanes : Anti-WDR41 Antibody (C-term) at 1:1000 dilution Lane 1: U-87 MG whole cell lysate Lane 2: U266B1 whole cell lysate Lane 3: Daudi whole cell lysate Lane 4: U-251 MG whole cell lysate Lane 5: 293 whole cell lysate Lysates/proteins at 20 µg per lane. Secondary Goat Anti-Rabbit IgG, (H+L), Peroxidase conjugated at 1/10000 dilution. Predicted band size : 52 kDa Blocking/Dilution buffer: 5% NFDM/TBST.



Immunohistochemical analysis of AP10866B on paraffin-embedded Human placenta tissue. Tissue was fixed with formaldehyde at room temperature. Heat induced epitope retrieval was performed by EDTA buffer (pH9. 0). Samples were incubated with primary antibody(1:100) for 1 hour at room temperature. Undiluted CRF Anti-Polyvalent HRP Polymer antibody was used as the secondary antibody.



Immunohistochemical analysis of AP10866B on paraffin-embedded Human kidney tissue. Tissue was fixed with formaldehyde at room temperature. Heat induced epitope retrieval was performed by EDTA buffer (pH9. 0). Samples were incubated with primary antibody(1:100) for 1 hour at room temperature. Undiluted CRF Anti-Polyvalent HRP Polymer antibody was used as the secondary antibody.

WDR41 Antibody (C-term) - References

Bailey, S.D., et al. Diabetes Care (2010) In press :
Rose, J.E., et al. Mol. Med. 16 (7-8), 247-253 (2010) :
Talmud, P.J., et al. Am. J. Hum. Genet. 85(5):628-642(2009)

WDR41 Antibody (C-term) - Citations

- [Implementation of an antibody characterization procedure and application to the major ALS/FTD disease gene C9ORF72](#)