

WDR49 Antibody (C-term)
Affinity Purified Rabbit Polyclonal Antibody (Pab)
Catalog # AP10872b**Specification**

WDR49 Antibody (C-term) - Product Information

Application	WB, IHC-P, FC,E
Primary Accession	Q8IV35
Other Accession	NP_849146.1
Reactivity	Human
Host	Rabbit
Clonality	Polyclonal
Isotype	Rabbit IgG
Calculated MW	79295
Antigen Region	550-579

WDR49 Antibody (C-term) - Additional Information**Other Names**

WD repeat-containing protein 49, WDR49

Target/Specificity

This WDR49 antibody is generated from rabbits immunized with a KLH conjugated synthetic peptide between 550-579 amino acids from the C-terminal region of human WDR49.

Dilution

WB~~1:1000
IHC-P~~1:50~100
FC~~1:10~50

Format

Purified polyclonal antibody supplied in PBS with 0.09% (W/V) sodium azide. This antibody is purified through a protein A column, followed by peptide affinity purification.

Storage

Maintain refrigerated at 2-8°C for up to 2 weeks. For long term storage store at -20°C in small aliquots to prevent freeze-thaw cycles.

Precautions

WDR49 Antibody (C-term) is for research use only and not for use in diagnostic or therapeutic procedures.

WDR49 Antibody (C-term) - Protein Information

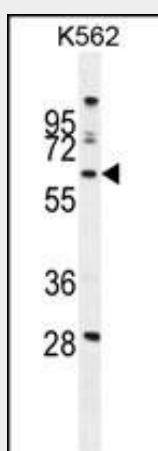
Name WDR49

WDR49 Antibody (C-term) - Protocols

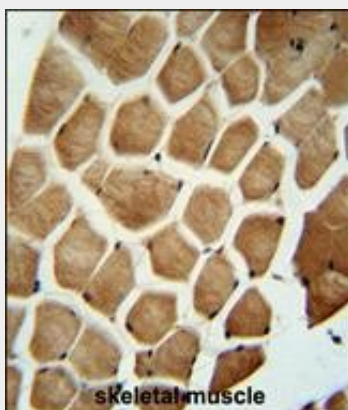
Provided below are standard protocols that you may find useful for product applications.

- [Western Blot](#)
- [Blocking Peptides](#)
- [Dot Blot](#)
- [Immunohistochemistry](#)
- [Immunofluorescence](#)
- [Immunoprecipitation](#)
- [Flow Cytometry](#)
- [Cell Culture](#)

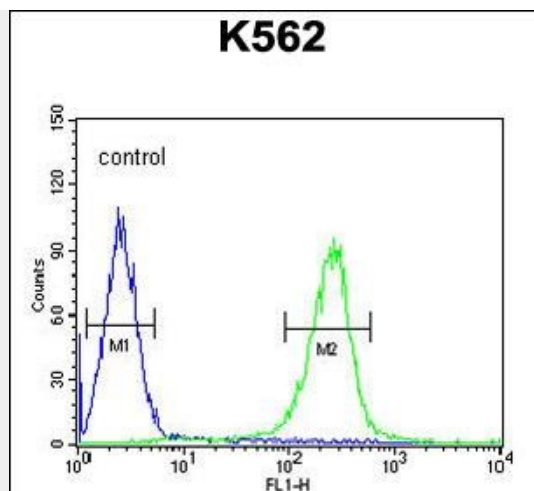
WDR49 Antibody (C-term) - Images



WDR49 Antibody (C-term) (Cat. #AP10872b) western blot analysis in K562 cell line lysates (35ug/lane). This demonstrates the WDR49 antibody detected the WDR49 protein (arrow).



WDR49 antibody (C-term) (Cat. #AP10872b) immunohistochemistry analysis in formalin fixed and paraffin embedded human skeletal muscle followed by peroxidase conjugation of the secondary antibody and DAB staining. This data demonstrates the use of the WDR49 antibody (C-term) for immunohistochemistry. Clinical relevance has not been evaluated.



WDR49 Antibody (C-term) (Cat. #AP10872b) flow cytometric analysis of K562 cells (right histogram) compared to a negative control cell (left histogram). FITC-conjugated goat-anti-rabbit secondary antibodies were used for the analysis.

WDR49 Antibody (C-term) - Background

WDR49 contains 8 WD repeats. The exact function of WDR49 remains unknown. There are two named isoforms.

WDR49 Antibody (C-term) - References

Rose, J.E., et al. Mol. Med. 16 (7-8), 247-253 (2010) :