

**DNAJB13 Antibody (Center)**  
**Affinity Purified Rabbit Polyclonal Antibody (Pab)**  
**Catalog # AP10884c**

**Specification**

---

**DNAJB13 Antibody (Center) - Product Information**

Application	WB, IHC-P,E
Primary Accession	<a href="#">P59910</a>
Other Accession	<a href="#">Q80Y75</a> , <a href="#">NP_705842.2</a>
Reactivity	Human
Predicted	Mouse
Host	Rabbit
Clonality	Polyclonal
Isotype	Rabbit IgG
Calculated MW	36118
Antigen Region	176-205

**DNAJB13 Antibody (Center) - Additional Information**

**Gene ID** 374407

**Other Names**

Dnaj homolog subfamily B member 13, Testis and spermatogenesis cell-related protein 6, Testis spermatocyte apoptosis-related gene 6 protein, Testis spermatogenesis apoptosis-related gene 3 protein, Testis spermatogenesis apoptosis-related gene 6 protein, DNAJB13, TSARG3, TSARG6

**Target/Specificity**

This DNAJB13 antibody is generated from rabbits immunized with a KLH conjugated synthetic peptide between 176-205 amino acids from the Central region of human DNAJB13.

**Dilution**

WB~~1:1000  
IHC-P~~1:50~100

**Format**

Purified polyclonal antibody supplied in PBS with 0.09% (W/V) sodium azide. This antibody is purified through a protein A column, followed by peptide affinity purification.

**Storage**

Maintain refrigerated at 2-8°C for up to 2 weeks. For long term storage store at -20°C in small aliquots to prevent freeze-thaw cycles.

**Precautions**

DNAJB13 Antibody (Center) is for research use only and not for use in diagnostic or therapeutic procedures.

**DNAJB13 Antibody (Center) - Protein Information**

**Name** DNAJB13

**Synonyms** TSARG3, TSARG6

**Function** Functions as part of axonemal radial spoke complexes that play an important part in the motility of sperm and cilia.

**Cellular Location**

Cell projection, cilium, flagellum. Note=Localizes both to epithelial motile cilium and the sperm flagellum (PubMed:27486783). In spermatids, rapidly enriched in the coupling apparatus with the elongation of the spermatid. Tightly attached to the implantation fossa during the maturation of the spermatid. In mature spermatozoa evenly distributed along the flagellum (By similarity). {ECO:0000250|UniProtKB:Q80Y75, ECO:0000269|PubMed:27486783}

**Tissue Location**

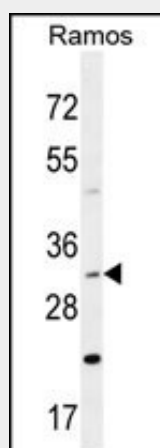
Specifically expressed in testis and trachea.

**DNAJB13 Antibody (Center) - Protocols**

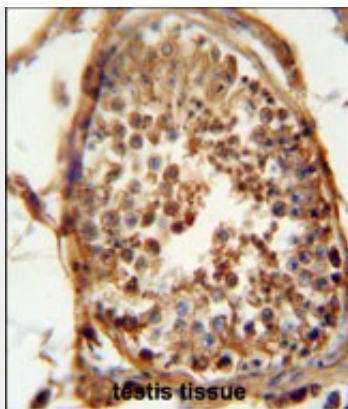
Provided below are standard protocols that you may find useful for product applications.

- [Western Blot](#)
- [Blocking Peptides](#)
- [Dot Blot](#)
- [Immunohistochemistry](#)
- [Immunofluorescence](#)
- [Immunoprecipitation](#)
- [Flow Cytometry](#)
- [Cell Culture](#)

**DNAJB13 Antibody (Center) - Images**



DNAJB13 Antibody (Center) (Cat. #AP10884c) western blot analysis in Ramos cell line lysates (35ug/lane). This demonstrates the DNAJB13 antibody detected the DNAJB13 protein (arrow).



DNAJB13 antibody (Center) (Cat. #AP10884c) immunohistochemistry analysis in formalin fixed and paraffin embedded human testis carcinoma followed by peroxidase conjugation of the secondary antibody and DAB staining. This data demonstrates the use of the DNAJB13 antibody (Center) for immunohistochemistry. Clinical relevance has not been evaluated.

#### **DNAJB13 Antibody (Center) - Background**

DNAJB13 belongs to the evolutionarily conserved DNAJ/HSP40 family of proteins. For background information on the DNAJ family, see 608375.

#### **DNAJB13 Antibody (Center) - References**

Shimada, M., et al. Hum. Genet. 128(4):433-441(2010)  
Liu, G., et al. Acta Biochim. Biophys. Sin. (Shanghai) 36(2):93-98(2004)  
Liu, G., et al. Zhonghua Yi Xue Yi Chuan Xue Za Zhi 20(2):107-110(2003)