

TEX13B Antibody (C-term)
Affinity Purified Rabbit Polyclonal Antibody (Pab)
Catalog # AP10895b**Specification**

TEX13B Antibody (C-term) - Product Information

Application	WB, IHC-P, FC,E
Primary Accession	O9BXU2
Other Accession	NP_112563.1
Reactivity	Human
Host	Rabbit
Clonality	Polyclonal
Isotype	Rabbit IgG
Calculated MW	33967
Antigen Region	276-305

TEX13B Antibody (C-term) - Additional Information**Gene ID** 56156**Other Names**

Testis-expressed sequence 13B protein, TEX13B

Target/Specificity

This TEX13B antibody is generated from rabbits immunized with a KLH conjugated synthetic peptide between 276-305 amino acids from the C-terminal region of human TEX13B.

Dilution

WB~~1:1000
IHC-P~~1:50~100
FC~~1:10~50

Format

Purified polyclonal antibody supplied in PBS with 0.09% (W/V) sodium azide. This antibody is purified through a protein A column, followed by peptide affinity purification.

Storage

Maintain refrigerated at 2-8°C for up to 2 weeks. For long term storage store at -20°C in small aliquots to prevent freeze-thaw cycles.

Precautions

TEX13B Antibody (C-term) is for research use only and not for use in diagnostic or therapeutic procedures.

TEX13B Antibody (C-term) - Protein Information**Name** TEX13B

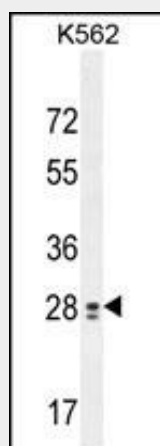
Tissue Location

Testis specific.

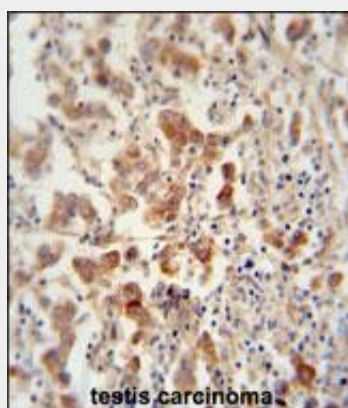
TEX13B Antibody (C-term) - Protocols

Provided below are standard protocols that you may find useful for product applications.

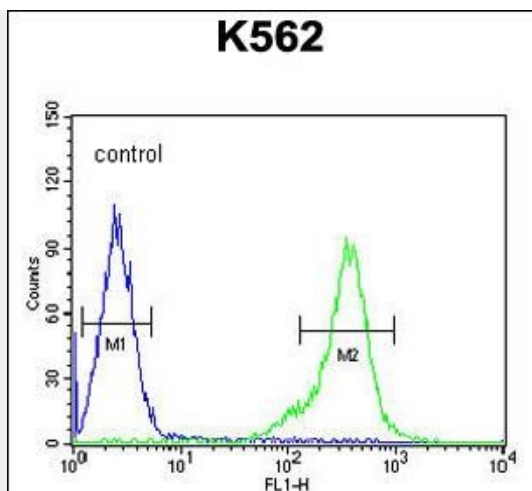
- [Western Blot](#)
- [Blocking Peptides](#)
- [Dot Blot](#)
- [Immunohistochemistry](#)
- [Immunofluorescence](#)
- [Immunoprecipitation](#)
- [Flow Cytometry](#)
- [Cell Culture](#)

TEX13B Antibody (C-term) - Images

TEX13B Antibody (C-term) (Cat. #AP10895b) western blot analysis in K562 cell line lysates (35ug/lane). This demonstrates the TEX13B antibody detected the TEX13B protein (arrow).



TEX13B antibody (C-term) (Cat. #AP10895b) immunohistochemistry analysis in formalin fixed and paraffin embedded human testis carcinoma followed by peroxidase conjugation of the secondary antibody and DAB staining. This data demonstrates the use of the TEX13B antibody (C-term) for immunohistochemistry. Clinical relevance has not been evaluated.



TEX13B Antibody (C-term) (Cat. #AP10895b) flow cytometric analysis of K562 cells (right histogram) compared to a negative control cell (left histogram). FITC-conjugated goat-anti-rabbit secondary antibodies were used for the analysis.

TEX13B Antibody (C-term) - Background

This gene is similar to a mouse gene that is expressed in the testis.

TEX13B Antibody (C-term) - References

Ross, M.T., et al. Nature 434(7031):325-337(2005)
Lee, S., et al. J. Assist. Reprod. Genet. 20(9):385-389(2003)
Wang, P.J., et al. Nat. Genet. 27(4):422-426(2001)