

BTNL3 Antibody (C-term)
Affinity Purified Rabbit Polyclonal Antibody (Pab)
Catalog # AP10903b**Specification**

BTNL3 Antibody (C-term) - Product Information

| | |
|-------------------|-----------------------------|
| Application | WB, FC,E |
| Primary Accession | Q6UXE8 |
| Other Accession | NP_932079.1 |
| Reactivity | Human |
| Host | Rabbit |
| Clonality | Polyclonal |
| Isotype | Rabbit IgG |
| Calculated MW | 52251 |
| Antigen Region | 427-455 |

BTNL3 Antibody (C-term) - Additional Information**Gene ID** 10917**Other Names**

Butyrophilin-like protein 3, Butyrophilin-like receptor, BTNL3, BTNLR, COLF4100

Target/Specificity

This BTNL3 antibody is generated from rabbits immunized with a KLH conjugated synthetic peptide between 427-455 amino acids from the C-terminal region of human BTNL3.

Dilution

WB~~1:1000

FC~~1:10~50

Format

Purified polyclonal antibody supplied in PBS with 0.09% (W/V) sodium azide. This antibody is purified through a protein A column, followed by peptide affinity purification.

Storage

Maintain refrigerated at 2-8°C for up to 2 weeks. For long term storage store at -20°C in small aliquots to prevent freeze-thaw cycles.

Precautions

BTNL3 Antibody (C-term) is for research use only and not for use in diagnostic or therapeutic procedures.

BTNL3 Antibody (C-term) - Protein Information**Name** BTNL3**Synonyms** BTNLR, COLF4100

Cellular Location

Membrane; Single-pass type I membrane protein

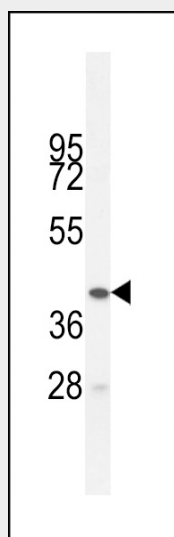
Tissue Location

Expressed in small intestine, colon, testis, spleen, and leukocyte.

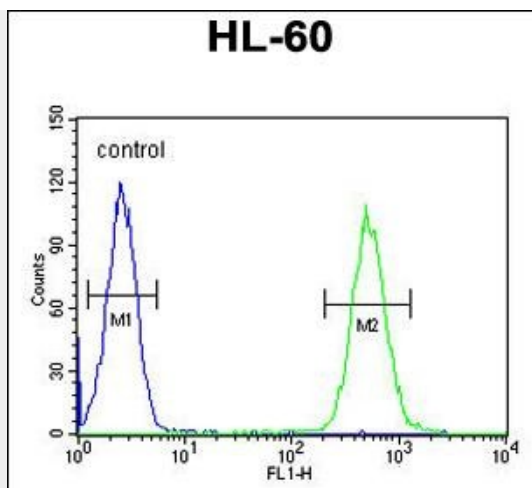
BTNL3 Antibody (C-term) - Protocols

Provided below are standard protocols that you may find useful for product applications.

- [Western Blot](#)
- [Blocking Peptides](#)
- [Dot Blot](#)
- [Immunohistochemistry](#)
- [Immunofluorescence](#)
- [Immunoprecipitation](#)
- [Flow Cytometry](#)
- [Cell Culture](#)

BTNL3 Antibody (C-term) - Images

BTNL3 Antibody (C-term) (Cat. #AP10903b) western blot analysis in HL-60 cell line lysates (35ug/lane). This demonstrates the BTNL3 antibody detected the BTNL3 protein (arrow).



BTNL3 Antibody (C-term) (Cat. #AP10903b) flow cytometric analysis of HL-60 cells (right histogram) compared to a negative control cell (left histogram). FITC-conjugated goat-anti-rabbit secondary antibodies were used for the analysis.

BTNL3 Antibody (C-term) - Background

BTNL3 is expressed in small intestine, colon, testis, spleen, and leukocyte and plays a role in lipid metabolism. Two isoforms have been described.

BTNL3 Antibody (C-term) - References

Clark, H.F., et al. Genome Res. 13(10):2265-2270(2003)
Shibui, A., et al. J. Hum. Genet. 44(4):249-252(1999)