

EFHB Antibody (N-term)
Affinity Purified Rabbit Polyclonal Antibody (Pab)
Catalog # AP10904a**Specification**

EFHB Antibody (N-term) - Product Information

Application	WB, IHC-P, FC,E
Primary Accession	Q8N7U6
Other Accession	NP_653316.3
Reactivity	Human
Host	Rabbit
Clonality	Polyclonal
Isotype	Rabbit IgG
Calculated MW	93802
Antigen Region	1-30

EFHB Antibody (N-term) - Additional Information**Gene ID** 151651**Other Names**

EF-hand domain-containing family member B, EFHB

Target/Specificity

This EFHB antibody is generated from rabbits immunized with a KLH conjugated synthetic peptide between 1-30 amino acids from the N-terminal region of human EFHB.

Dilution

WB~~1:1000
IHC-P~~1:50~100
FC~~1:10~50

Format

Purified polyclonal antibody supplied in PBS with 0.09% (W/V) sodium azide. This antibody is purified through a protein A column, followed by peptide affinity purification.

Storage

Maintain refrigerated at 2-8°C for up to 2 weeks. For long term storage store at -20°C in small aliquots to prevent freeze-thaw cycles.

Precautions

EFHB Antibody (N-term) is for research use only and not for use in diagnostic or therapeutic procedures.

EFHB Antibody (N-term) - Protein Information**Name** EFHB ([HGNC:26330](#))

Synonyms CFAP21

Function Cytosolic sensor for calcium, modulates the interaction of STIM1 and ORAI1 upon store depletion and the activation of store- operated Ca^{2+} entry (SOCE) and NFAT translocation from cytosol to nucleus (PubMed:[30481768](#)). Microtubule inner protein (MIP) part of the dynein-decorated doublet microtubules (DMTs) in cilia axoneme, which is required for motile cilia beating (PubMed:[36191189](#)).

Cellular Location

Cytoplasm. Cytoplasm, cytoskeleton, cilium axoneme

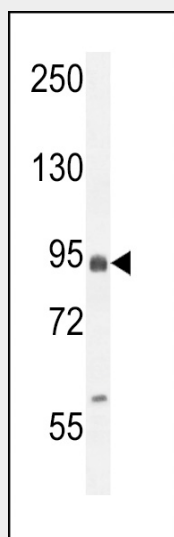
Tissue Location

Expressed in airway epithelial cells.

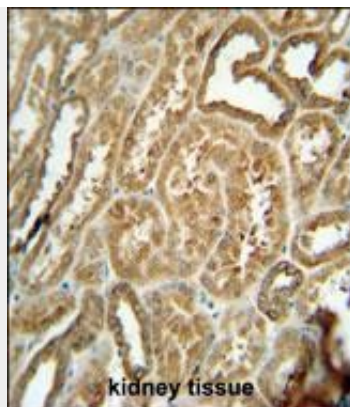
EFHB Antibody (N-term) - Protocols

Provided below are standard protocols that you may find useful for product applications.

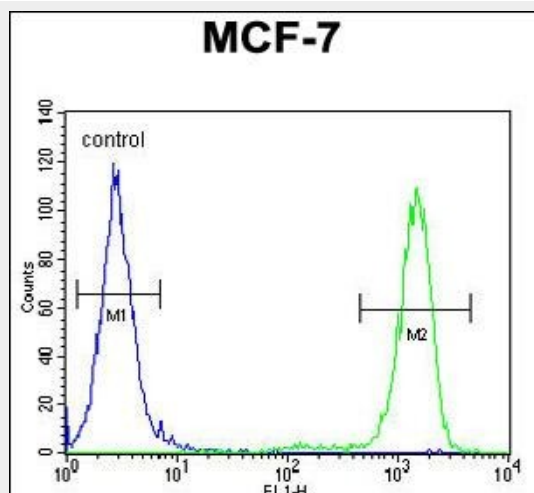
- [Western Blot](#)
- [Blocking Peptides](#)
- [Dot Blot](#)
- [Immunohistochemistry](#)
- [Immunofluorescence](#)
- [Immunoprecipitation](#)
- [Flow Cytometry](#)
- [Cell Culture](#)

EFHB Antibody (N-term) - Images

EFHB Antibody (N-term) (Cat. #AP10904a) western blot analysis in MCF-7 cell line lysates (35ug/lane). This demonstrates the EFHB antibody detected the EFHB protein (arrow).



EFHB antibody (N-term) (Cat. #AP10904a) immunohistochemistry analysis in formalin fixed and paraffin embedded human kidney tissue followed by peroxidase conjugation of the secondary antibody and DAB staining. This data demonstrates the use of the EFHB antibody (N-term) for immunohistochemistry. Clinical relevance has not been evaluated.



EFHB Antibody (N-term) (Cat. #AP10904a) flow cytometric analysis of MCF-7 cells (right histogram) compared to a negative control cell (left histogram). FITC-conjugated goat-anti-rabbit secondary antibodies were used for the analysis.

EFHB Antibody (N-term) - Background

EFHB contains two EF-hand domains. There are three named isoforms.

EFHB Antibody (N-term) - References

Rose, J. Phd, et al. Mol. Med. (2010) In press :

EFHB Antibody (N-term) - Citations

- [EFHB is a Novel Cytosolic Ca²⁺ Sensor That Modulates STIM1-SARAF Interaction.](#)