

**C11orf53 Antibody (C-term)**  
**Affinity Purified Rabbit Polyclonal Antibody (Pab)**  
**Catalog # AP10921b****Specification**

---

**C11orf53 Antibody (C-term) - Product Information**

Application	WB, IHC-P, FC,E
Primary Accession	<a href="#">Q8IXP5</a>
Other Accession	<a href="#">NP_940900.1</a>
Reactivity	Human
Host	Rabbit
Clonality	Polyclonal
Isotype	Rabbit IgG
Calculated MW	31101
Antigen Region	187-215

**C11orf53 Antibody (C-term) - Additional Information****Gene ID** 341032**Other Names**

Uncharacterized protein C11orf53, C11orf53

**Target/Specificity**

This C11orf53 antibody is generated from rabbits immunized with a KLH conjugated synthetic peptide between 187-215 amino acids from the C-terminal region of human C11orf53.

**Dilution**

WB~~1:1000  
IHC-P~~1:50~100  
FC~~1:10~50

**Format**

Purified polyclonal antibody supplied in PBS with 0.09% (W/V) sodium azide. This antibody is purified through a protein A column, followed by peptide affinity purification.

**Storage**

Maintain refrigerated at 2-8°C for up to 2 weeks. For long term storage store at -20°C in small aliquots to prevent freeze-thaw cycles.

**Precautions**

C11orf53 Antibody (C-term) is for research use only and not for use in diagnostic or therapeutic procedures.

**C11orf53 Antibody (C-term) - Protein Information****Name** OCAT1

**Function** Transcriptional coactivator of POU2F3 (PubMed:[35576971](#), PubMed:[36197978](#)). This complex drives the development of tuft cells, a rare chemosensory cells that coordinate immune and neural functions within mucosal epithelial tissues (PubMed:[35576971](#)).

**Cellular Location**

Cytoplasm, cytosol. Nucleus Note=Recruited to chromatin by POU2F3.

**Tissue Location**

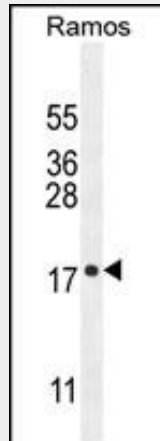
Expressed in tuft cells of colon mucosa, as well as in small intestine and thymus (PubMed:35576971)

**C11orf53 Antibody (C-term) - Protocols**

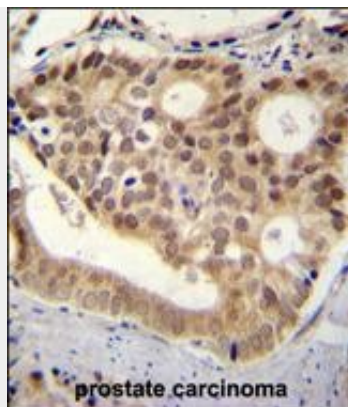
Provided below are standard protocols that you may find useful for product applications.

- [Western Blot](#)
- [Blocking Peptides](#)
- [Dot Blot](#)
- [Immunohistochemistry](#)
- [Immunofluorescence](#)
- [Immunoprecipitation](#)
- [Flow Cytometry](#)
- [Cell Culture](#)

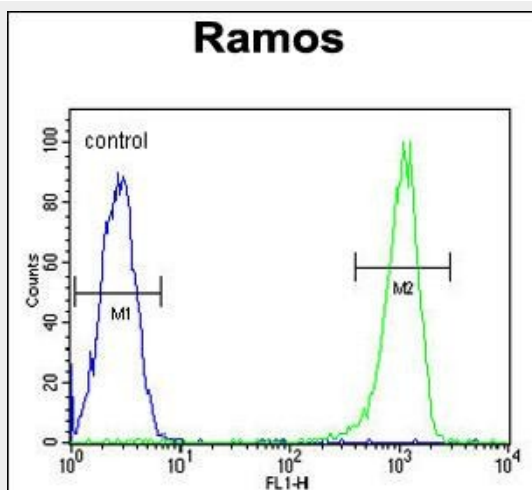
**C11orf53 Antibody (C-term) - Images**



C11orf53 Antibody (C-term) (Cat. #AP10921b) western blot analysis in Ramos cell line lysates (35ug/lane). This demonstrates the C11orf53 antibody detected the C11orf53 protein (arrow).



C11orf53 antibody (C-term) (Cat. #AP10921b) immunohistochemistry analysis in formalin fixed and paraffin embedded human pancreas tissue followed by peroxidase conjugation of the secondary antibody and DAB staining. This data demonstrates the use of C11orf53 antibody (C-term) for immunohistochemistry. Clinical relevance has not been evaluated.



C11orf53 Antibody (C-term) (Cat. #AP10921b) flow cytometric analysis of Ramos cells (right histogram) compared to a negative control cell (left histogram). FITC-conjugated goat-anti-rabbit secondary antibodies were used for the analysis.

#### **C11orf53 Antibody (C-term) - Background**

The specific function of C11orf53 remains unknown.

#### **C11orf53 Antibody (C-term) - References**

- Pittman, A.M., et al. Hum. Mol. Genet. 17(23):3720-3727(2008)  
Lamesch, P., et al. Genomics 89(3):307-315(2007)