

CSH1 Antibody (C-term)
Affinity Purified Rabbit Polyclonal Antibody (Pab)
Catalog # AP10929b**Specification**

CSH1 Antibody (C-term) - Product Information

Application	WB, IHC-P,E
Primary Accession	P01243
Other Accession	P01241 , P01242 , Q14406 , PODML3 , PODML2 , NP_001308.1
Reactivity	Human
Host	Rabbit
Clonality	Polyclonal
Isotype	Rabbit IgG
Antigen Region	177-204

CSH1 Antibody (C-term) - Additional Information**Other Names**

CSH1; Chorionic somatomammotropin hormone; Lactogen; Placental lactogen

Target/Specificity

This CSH1 antibody is generated from rabbits immunized with a KLH conjugated synthetic peptide between 177-204 amino acids from the C-terminal region of human CSH1.

Dilution

WB~~1:1000
IHC-P~~1:50~100

Format

Purified polyclonal antibody supplied in PBS with 0.09% (W/V) sodium azide. This antibody is purified through a protein A column, followed by peptide affinity purification.

Storage

Maintain refrigerated at 2-8°C for up to 2 weeks. For long term storage store at -20°C in small aliquots to prevent freeze-thaw cycles.

Precautions

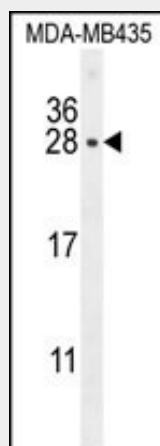
CSH1 Antibody (C-term) is for research use only and not for use in diagnostic or therapeutic procedures.

CSH1 Antibody (C-term) - Protein Information**CSH1 Antibody (C-term) - Protocols**

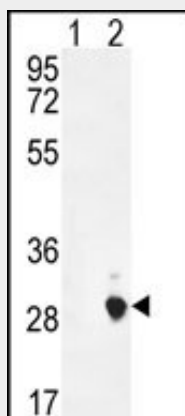
Provided below are standard protocols that you may find useful for product applications.

- [Western Blot](#)
- [Blocking Peptides](#)
- [Dot Blot](#)
- [Immunohistochemistry](#)
- [Immunofluorescence](#)
- [Immunoprecipitation](#)
- [Flow Cytometry](#)
- [Cell Culture](#)

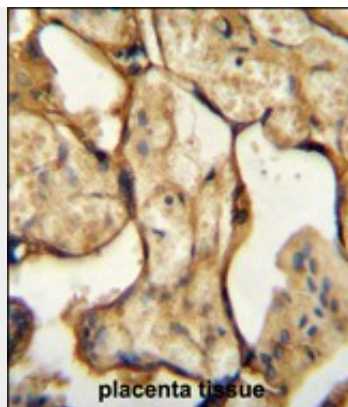
CSH1 Antibody (C-term) - Images



CSH1 Antibody (C-term) (Cat. #AP10929b) western blot analysis in MDA-MB435 cell line lysates (35ug/lane). This demonstrates the CSH1 antibody detected the CSH1 protein (arrow).



Western blot analysis of CSH1 (arrow) using rabbit polyclonal CSH1 Antibody (C-term) (Cat. #AP10929b). 293 cell lysates (2 ug/lane) either nontransfected (Lane 1) or transiently transfected (Lane 2) with the CSH1 gene.



CSH1 Antibody (C-term) (Cat. #AP10929b) immunohistochemistry analysis in formalin fixed and paraffin embedded human placenta tissue followed by peroxidase conjugation of the secondary antibody and DAB staining. This data demonstrates the use of the CSH1 Antibody (C-term) for immunohistochemistry. Clinical relevance has not been evaluated.

CSH1 Antibody (C-term) - Background

The protein encoded by this gene is a member of the somatotropin/prolactin family of hormones and plays an important role in growth control. The gene is located at the growth hormone locus on chromosome 17 along with four other related genes in the same transcriptional orientation; an arrangement which is thought to have evolved by a series of gene duplications. Although the five genes share a remarkably high degree of sequence identity, they are expressed selectively in different tissues. Alternative splicing generates additional isoforms of each of the five growth hormones, leading to further diversity and potential for specialization. This particular family member is expressed mainly in the placenta and utilizes multiple transcription initiation sites. Expression of the identical mature proteins for chorionic somatomammotropin hormones 1 and 2 is upregulated during development, although the ratio of 1 to 2 increases by term. Mutations in this gene result in placental lactogen deficiency and Silver-Russell syndrome. [provided by RefSeq].

CSH1 Antibody (C-term) - References

Voorhees, J.L., et al. J. Biol. Chem. 285(26):20022-20030(2010)
Mannik, J., et al. J. Clin. Endocrinol. Metab. 95(5):2433-2442(2010)
Davila, S., et al. Genes Immun. 11(3):232-238(2010)
Varvarigou, A.A., et al. J Perinat Med 37(4):364-369(2009)
Chen, Y., et al. Cancer Res. 68(23):9729-9734(2008)