

CEBPD Antibody (N-term)
Affinity Purified Rabbit Polyclonal Antibody (Pab)
Catalog # AP10950a**Specification**

CEBPD Antibody (N-term) - Product Information

Application	WB,E
Primary Accession	P49716
Other Accession	O02756 , NP_005186.2 , Q9NQJ3
Reactivity	Human, Mouse
Predicted	Bovine, Sheep
Host	Rabbit
Clonality	Polyclonal
Isotype	Rabbit IgG
Antigen Region	10-39

CEBPD Antibody (N-term) - Additional Information**Gene ID** 1052**Other Names**

CCAAT/enhancer-binding protein delta, C/EBP delta, Nuclear factor NF-IL6-beta, NF-IL6-beta, CEBPD

Target/Specificity

This CEBPD antibody is generated from rabbits immunized with a KLH conjugated synthetic peptide between 10-39 amino acids from the N-terminal region of human CEBPD.

Dilution

WB~~1:1000

Format

Purified polyclonal antibody supplied in PBS with 0.09% (W/V) sodium azide. This antibody is purified through a protein A column, followed by peptide affinity purification.

Storage

Maintain refrigerated at 2-8°C for up to 2 weeks. For long term storage store at -20°C in small aliquots to prevent freeze-thaw cycles.

Precautions

CEBPD Antibody (N-term) is for research use only and not for use in diagnostic or therapeutic procedures.

CEBPD Antibody (N-term) - Protein Information**Name** CEBPD**Function** Transcription activator that recognizes two different DNA motifs: the CCAAT homology

common to many promoters and the enhanced core homology common to many enhancers (PubMed:[16397300](#)). Important transcription factor regulating the expression of genes involved in immune and inflammatory responses (PubMed:[1741402](#), PubMed:[16397300](#)). Transcriptional activator that enhances IL6 transcription alone and as heterodimer with CEBPB (PubMed:[1741402](#)).

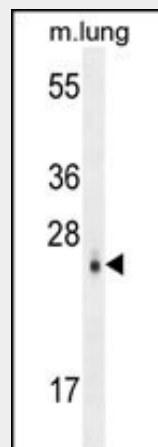
Cellular Location

Nucleus.

CEBPD Antibody (N-term) - Protocols

Provided below are standard protocols that you may find useful for product applications.

- [Western Blot](#)
- [Blocking Peptides](#)
- [Dot Blot](#)
- [Immunohistochemistry](#)
- [Immunofluorescence](#)
- [Immunoprecipitation](#)
- [Flow Cytometry](#)
- [Cell Culture](#)

CEBPD Antibody (N-term) - Images

CEBPD Antibody (N-term) (Cat. #AP10950a) western blot analysis in mouse lung tissue lysates (35ug/lane). This demonstrates the CEBPD antibody detected the CEBPD protein (arrow).

CEBPD Antibody (N-term) - Background

The protein encoded by this intronless gene is a bZIP transcription factor which can bind as a homodimer to certain DNA regulatory regions. It can also form heterodimers with the related protein CEBP-alpha. The encoded protein is important in the regulation of genes involved in immune and inflammatory responses, and may be involved in the regulation of genes associated with activation and/or differentiation of macrophages. The cytogenetic location of this locus has been reported as both 8p11 and 8q11.

CEBPD Antibody (N-term) - References

Zannetti, C., et al. J. Biol. Chem. 285(45):34773-34780(2010)
Wang, J., et al. Proc. Natl. Acad. Sci. U.S.A. 107(37):16131-16136(2010)
Hour, T.C., et al. Biochem. Pharmacol. 80(3):325-334(2010)
Bennett, C.E., et al. Diab Vasc Dis Res 7(3):195-203(2010)
Payne, V.A., et al. Biochem. J. 425(1):215-223(2010)