

IL17F Antibody (N-term)
Affinity Purified Rabbit Polyclonal Antibody (Pab)
Catalog # AP10961a**Specification**

IL17F Antibody (N-term) - Product Information

Application	WB, FC,E
Primary Accession	O96PD4
Other Accession	NP_443104.1
Reactivity	Human
Host	Rabbit
Clonality	Polyclonal
Isotype	Rabbit IgG
Calculated MW	18045
Antigen Region	16-45

IL17F Antibody (N-term) - Additional Information**Gene ID** 112744**Other Names**

Interleukin-17F, IL-17F, Cytokine ML-1, IL17F

Target/Specificity

This IL17F antibody is generated from rabbits immunized with a KLH conjugated synthetic peptide between 16-45 amino acids from the N-terminal region of human IL17F.

Dilution

WB~~1:1000

FC~~1:10~50

Format

Purified polyclonal antibody supplied in PBS with 0.09% (W/V) sodium azide. This antibody is purified through a protein A column, followed by peptide affinity purification.

Storage

Maintain refrigerated at 2-8°C for up to 2 weeks. For long term storage store at -20°C in small aliquots to prevent freeze-thaw cycles.

Precautions

IL17F Antibody (N-term) is for research use only and not for use in diagnostic or therapeutic procedures.

IL17F Antibody (N-term) - Protein Information**Name** IL17F**Function** Effector cytokine of innate and adaptive immune system involved in antimicrobial host

defense and maintenance of tissue integrity (PubMed:[21350122](#)). IL17A-IL17F signals via IL17RA-IL17RC heterodimeric receptor complex, triggering homotypic interaction of IL17RA and IL17RC chains with TRAF3IP2 adapter through SEFIR domains. This leads to downstream TRAF6-mediated activation of NF-kappa-B and MAPkinase pathways ultimately resulting in transcriptional activation of cytokines, chemokines, antimicrobial peptides and matrix metalloproteinases, with potential strong immune inflammation (PubMed:[18684971](#), PubMed:[21350122](#), PubMed:[11591732](#), PubMed:[11591768](#), PubMed:[17911633](#), PubMed:[11574464](#), PubMed:[28827714](#)). IL17A-IL17F is primarily involved in host defense against extracellular bacteria and fungi by inducing neutrophilic inflammation (By similarity). As signature effector cytokine of T-helper 17 cells (Th17), primarily induces neutrophil activation and recruitment at infection and inflammatory sites (By similarity). Stimulates the production of antimicrobial beta-defensins DEFB1, DEFB103A, and DEFB104A by mucosal epithelial cells, limiting the entry of microbes through the epithelial barriers (By similarity). IL17F homodimer can signal via IL17RC homodimeric receptor complex, triggering downstream activation of TRAF6 and NF-kappa-B signaling pathway (PubMed:[32187518](#)). Via IL17RC induces transcriptional activation of IL33, a potent cytokine that stimulates group 2 innate lymphoid cells and adaptive T-helper 2 cells involved in pulmonary allergic response to fungi. Likely via IL17RC, promotes sympathetic innervation of peripheral organs by coordinating the communication between gamma-delta T cells and parenchymal cells. Stimulates sympathetic innervation of thermogenic adipose tissue by driving TGFB1 expression (By similarity). Regulates the composition of intestinal microbiota and immune tolerance by inducing antimicrobial proteins that specifically control the growth of commensal Firmicutes and Bacteroidetes (By similarity).

Cellular Location

Secreted {ECO:0000250|UniProtKB:Q7TNI7}.

Tissue Location

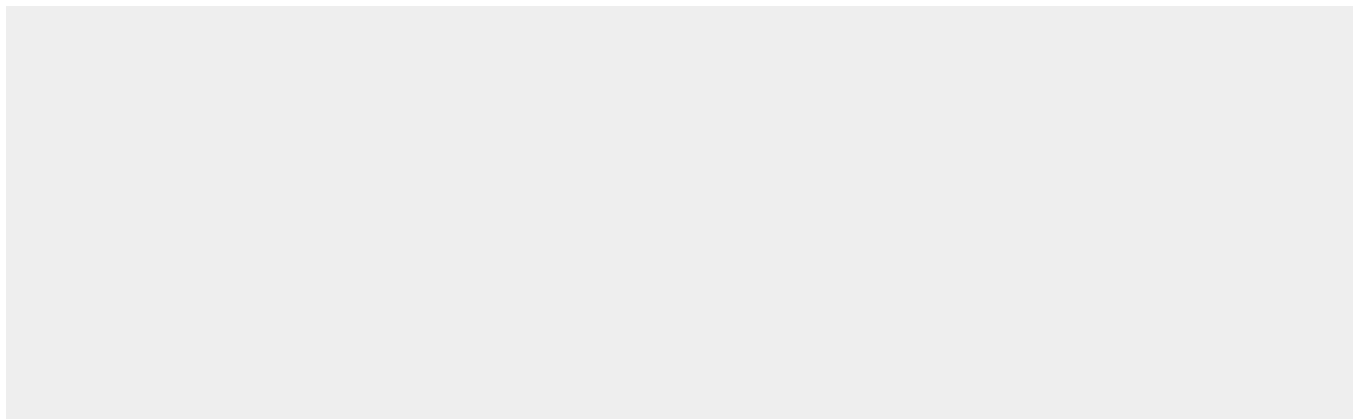
Expressed in T-helper 1 and T-helper 2 cells, basophils and mast cells.

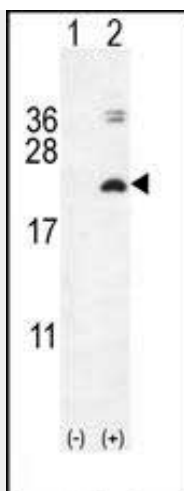
IL17F Antibody (N-term) - Protocols

Provided below are standard protocols that you may find useful for product applications.

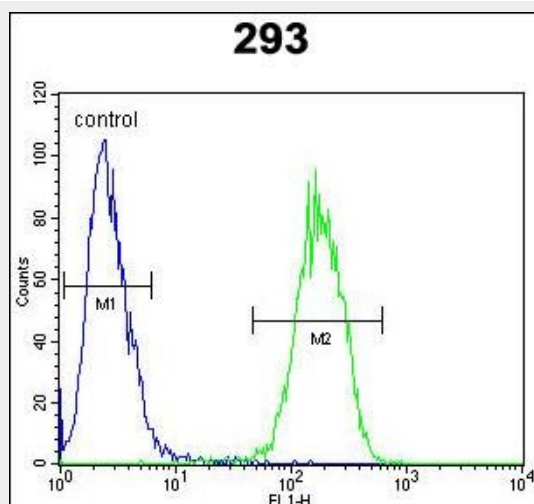
- [Western Blot](#)
- [Blocking Peptides](#)
- [Dot Blot](#)
- [Immunohistochemistry](#)
- [Immunofluorescence](#)
- [Immunoprecipitation](#)
- [Flow Cytometry](#)
- [Cell Culture](#)

IL17F Antibody (N-term) - Images





Western blot analysis of IL17F (arrow) using rabbit polyclonal IL17F Antibody (N-term) (Cat. #AP10961a). 293 cell lysates (2 ug/lane) either nontransfected (Lane 1) or transiently transfected with the IL17F gene (Lane 2) .



IL17F Antibody (N-term) (Cat. #AP10961a) flow cytometric analysis of 293 cells (right histogram) compared to a negative control cell (left histogram). FITC-conjugated goat-anti-rabbit secondary antibodies were used for the analysis.

IL17F Antibody (N-term) - Background

The protein encoded by this gene is a cytokine that shares sequence similarity with IL17. This cytokine is expressed by activated T cells, and has been shown to stimulate the production of several other cytokines, including IL6, IL8, and CSF2/GM-CSF. This cytokine is also found to inhibit the angiogenesis of endothelial cells and induce endothelial cells to produce IL2, TGFB1/TGFB, and monocyte chemoattractant protein-1. [provided by RefSeq].

IL17F Antibody (N-term) - References

- Bailey, S.D., et al. Diabetes Care 33(10):2250-2253(2010)
- Shu, Q., et al. Hum. Immunol. 71(10):988-991(2010)
- Paradowska-Gorycka, A., et al. Scand. J. Immunol. 72(2):134-141(2010)
- Tanasescu, C., et al. Eur. J. Intern. Med. 21(3):202-207(2010)

Davila, S., et al. Genes Immun. 11(3):232-238(2010)