

**ITIH5 Antibody (C-term)**  
**Affinity Purified Rabbit Polyclonal Antibody (Pab)**  
**Catalog # AP10965b****Specification**

---

**ITIH5 Antibody (C-term) - Product Information**

|                   |  |
|-------------------|--|
| Application       | WB, IHC-P,E  |
| Primary Accession | <a href="#">Q86UX2</a>   |
| Other Accession   | <a href="#">NP_085046.4</a> , <a href="#">NP_116206.3</a> , <a href="#">NP_001001851.1</a> |
| Reactivity        | Human  |
| Host              | Rabbit   |
| Clonality         | Polyclonal   |
| Isotype           | Rabbit IgG   |
| Calculated MW     | 104576   |
| Antigen Region    | 578-606  |

**ITIH5 Antibody (C-term) - Additional Information****Gene ID** 80760**Other Names**

Inter-alpha-trypsin inhibitor heavy chain H5, ITI heavy chain H5, ITI-HC5, Inter-alpha-inhibitor heavy chain 5, ITIH5, KIAA1953

**Target/Specificity**

This ITIH5 antibody is generated from rabbits immunized with a KLH conjugated synthetic peptide between 578-606 amino acids from the C-terminal region of human ITIH5.

**Dilution**WB~~1:1000  
IHC-P~~1:50~100**Format**

Purified polyclonal antibody supplied in PBS with 0.09% (W/V) sodium azide. This antibody is purified through a protein A column, followed by peptide affinity purification.

**Storage**

Maintain refrigerated at 2-8°C for up to 2 weeks. For long term storage store at -20°C in small aliquots to prevent freeze-thaw cycles.

**Precautions**

ITIH5 Antibody (C-term) is for research use only and not for use in diagnostic or therapeutic procedures.

**ITIH5 Antibody (C-term) - Protein Information****Name** ITIH5

**Synonyms** KIAA1953

**Function** May act as a tumor suppressor.

**Cellular Location**  
Secreted.

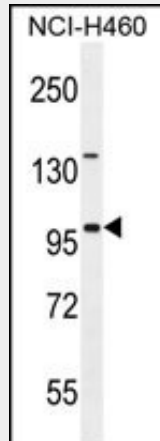
**Tissue Location**  
Abundantly expressed in placenta. Less abundant expression in mammary gland and ovary. Expression is barely detectable levels in all other tissues tested.

### ITIH5 Antibody (C-term) - Protocols

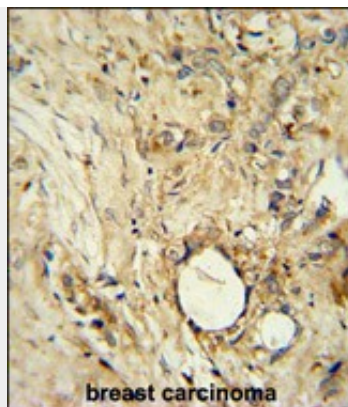
Provided below are standard protocols that you may find useful for product applications.

- [Western Blot](#)
- [Blocking Peptides](#)
- [Dot Blot](#)
- [Immunohistochemistry](#)
- [Immunofluorescence](#)
- [Immunoprecipitation](#)
- [Flow Cytometry](#)
- [Cell Culture](#)

### ITIH5 Antibody (C-term) - Images



ITIH5 Antibody (C-term) (Cat. #AP10965b) western blot analysis in NCI-H460 cell line lysates (35ug/lane). This demonstrates the ITIH5 antibody detected the ITIH5 protein (arrow).



ITIH5 Antibody (C-term) (Cat. #AP10965b) immunohistochemistry analysis in formalin fixed and paraffin embedded human breast carcinoma followed by peroxidase conjugation of the secondary antibody and DAB staining. This data demonstrates the use of the ITIH5 Antibody (C-term) for immunohistochemistry. Clinical relevance has not been evaluated.

#### **ITIH5 Antibody (C-term) - Background**

This gene encodes a heavy chain component of one of the inter-alpha-trypsin inhibitor (ITI) family members. ITI proteins are involved in extracellular matrix stabilization and in the prevention of tumor metastasis. They are also structurally related plasma serine protease inhibitors and are composed of a light chain and varying numbers of heavy chains. This family member is thought to function as a tumor suppressor in breast and thyroid cancers. Alternative splicing results in multiple transcript variants.

#### **ITIH5 Antibody (C-term) - References**

Pita, J.M., et al. Br. J. Cancer 101(10):1782-1791(2009)  
Veeck, J., et al. Pathologie 29 SUPPL 2, 338-346 (2008) :  
Veeck, J., et al. Oncogene 27(6):865-876(2008)  
Hamm, A., et al. BMC Cancer 8, 25 (2008) :  
Grupe, A., et al. Am. J. Hum. Genet. 78(1):78-88(2006)