

**BCLAF1 Antibody (C-term)**  
**Affinity Purified Rabbit Polyclonal Antibody (Pab)**  
**Catalog # AP10988b****Specification**

---

**BCLAF1 Antibody (C-term) - Product Information**

Application	WB, IHC-P,E
Primary Accession	<a href="#">Q9NYF8</a>
Other Accession	<a href="#">NP_055554.1</a> , <a href="#">NP_001070908.1</a> , <a href="#">NP_001070909.1</a>
Reactivity	Human
Host	Rabbit
Clonality	Polyclonal
Isotype	Rabbit IgG
Calculated MW	106122
Antigen Region	658-687

**BCLAF1 Antibody (C-term) - Additional Information****Gene ID** 9774**Other Names**

Bcl-2-associated transcription factor 1, Btf, BCLAF1, BTF, KIAA0164

**Target/Specificity**

This BCLAF1 antibody is generated from rabbits immunized with a KLH conjugated synthetic peptide between 658-687 amino acids from the C-terminal region of human BCLAF1.

**Dilution**WB~~1:1000  
IHC-P~~1:50~100**Format**

Purified polyclonal antibody supplied in PBS with 0.09% (W/V) sodium azide. This antibody is purified through a protein A column, followed by peptide affinity purification.

**Storage**

Maintain refrigerated at 2-8°C for up to 2 weeks. For long term storage store at -20°C in small aliquots to prevent freeze-thaw cycles.

**Precautions**

BCLAF1 Antibody (C-term) is for research use only and not for use in diagnostic or therapeutic procedures.

**BCLAF1 Antibody (C-term) - Protein Information****Name** BCLAF1

**Synonyms** BTF, KIAA0164

**Function** Death-promoting transcriptional repressor. May be involved in cyclin-D1/CCND1 mRNA stability through the SNARP complex which associates with both the 3'end of the CCND1 gene and its mRNA.

**Cellular Location**

Cytoplasm. Nucleus. Nucleus speckle. Nucleus, nucleoplasm

**Tissue Location**

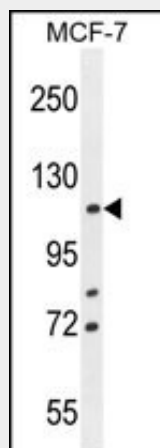
Ubiquitous.

**BCLAF1 Antibody (C-term) - Protocols**

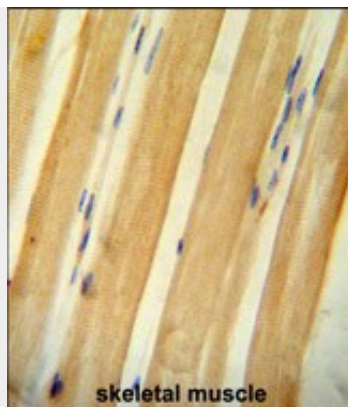
Provided below are standard protocols that you may find useful for product applications.

- [Western Blot](#)
- [Blocking Peptides](#)
- [Dot Blot](#)
- [Immunohistochemistry](#)
- [Immunofluorescence](#)
- [Immunoprecipitation](#)
- [Flow Cytometry](#)
- [Cell Culture](#)

**BCLAF1 Antibody (C-term) - Images**



BCLAF1 Antibody (C-term) (Cat. #AP10988b) western blot analysis in MCF-7 cell line lysates (35ug/lane). This demonstrates the BCLAF1 antibody detected the BCLAF1 protein (arrow).



BCLAF1 antibody (C-term) (Cat. #AP10988b) immunohistochemistry analysis in formalin fixed and paraffin embedded human skeletal muscle followed by peroxidase conjugation of the secondary antibody and DAB staining. This data demonstrates the use of the BCLAF1 antibody (C-term) for immunohistochemistry. Clinical relevance has not been evaluated.

#### **BCLAF1 Antibody (C-term) - Background**

This gene encodes a transcriptional repressor that interacts with several members of the BCL2 family of proteins. Overexpression of this protein induces apoptosis, which can be suppressed by co-expression of BCL2 proteins. The protein localizes to dot-like structures throughout the nucleus, and redistributes to a zone near the nuclear envelope in cells undergoing apoptosis. Multiple transcript variants encoding different isoforms have been found for this gene.

#### **BCLAF1 Antibody (C-term) - References**

Sarras, H., et al. ScientificWorldJournal 10, 1450-1461 (2010) :  
Renert, A.F., et al. J. Proteome Res. 8(10):4810-4822(2009)  
Liu, H., et al. Mol. Cell. Biol. 27(24):8480-8491(2007)  
Sugiyama, N., et al. Mol. Cell Proteomics 6(6):1103-1109(2007)  
Olsen, J.V., et al. Cell 127(3):635-648(2006)