

TM168 Antibody (C-term)
Affinity Purified Rabbit Polyclonal Antibody (Pab)
Catalog # AP11002B**Specification**

TM168 Antibody (C-term) - Product Information

Application	WB, FC,E
Primary Accession	Q9H0V1
Other Accession	Q5PQM0 , Q91VX9 , NP_071929.3
Reactivity	Human
Predicted	Mouse, Rat
Host	Rabbit
Clonality	Polyclonal
Isotype	Rabbit IgG
Calculated MW	79755
Antigen Region	558-587

TM168 Antibody (C-term) - Additional Information**Gene ID** 64418**Other Names**

Transmembrane protein 168, TMEM168

Target/Specificity

This TM168 antibody is generated from rabbits immunized with a KLH conjugated synthetic peptide between 558-587 amino acids from the C-terminal region of human TM168.

Dilution

WB~~1:1000

FC~~1:10~50

Format

Purified polyclonal antibody supplied in PBS with 0.09% (W/V) sodium azide. This antibody is purified through a protein A column, followed by peptide affinity purification.

Storage

Maintain refrigerated at 2-8°C for up to 2 weeks. For long term storage store at -20°C in small aliquots to prevent freeze-thaw cycles.

Precautions

TM168 Antibody (C-term) is for research use only and not for use in diagnostic or therapeutic procedures.

TM168 Antibody (C-term) - Protein Information**Name** TMEM168 ([HGNC:25826](#))

Function Plays a key role in maintaining the cardiac electrical stability by modulating cell surface expression of SCN5A (PubMed:[32175648](#)). May play a role in the modulation of anxiety behavior by regulating GABAergic neuronal system in the nucleus accumbens (By similarity).

Cellular Location

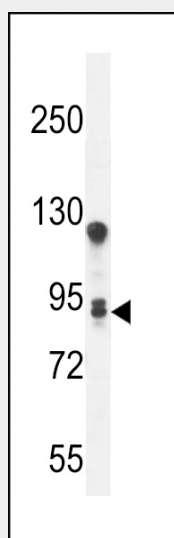
Nucleus membrane; Multi-pass membrane protein

TM168 Antibody (C-term) - Protocols

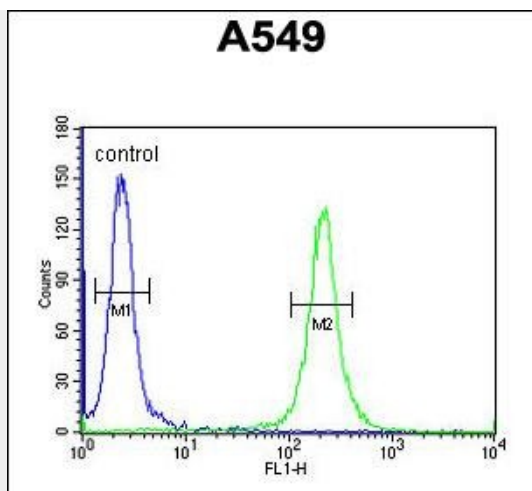
Provided below are standard protocols that you may find useful for product applications.

- [Western Blot](#)
- [Blocking Peptides](#)
- [Dot Blot](#)
- [Immunohistochemistry](#)
- [Immunofluorescence](#)
- [Immunoprecipitation](#)
- [Flow Cytometry](#)
- [Cell Culture](#)

TM168 Antibody (C-term) - Images



TM168 Antibody (C-term) (Cat. #AP11002b) western blot analysis in A549 cell line lysates (35ug/lane). This demonstrates the TM168 antibody detected the TM168 protein (arrow).



TM168 Antibody (C-term) (Cat. #AP11002b) flow cytometric analysis of A549 cells (right histogram) compared to a negative control cell (left histogram). FITC-conjugated goat-anti-rabbit secondary antibodies were used for the analysis.

TM168 Antibody (C-term) - Background

TMEM168 is a multi-pass membrane protein. It belongs to the TMEM168 family. The exact function of TMEM168 remains unknown.

TM168 Antibody (C-term) - References

Trynka, G., et al. Gut (2009) In press :
Simpson, J.C., et al. EMBO Rep. 1(3):287-292(2000)