

CR025 Antibody (Center)
Affinity Purified Rabbit Polyclonal Antibody (Pab)
Catalog # AP11006c**Specification**

CR025 Antibody (Center) - Product Information

Application	WB, IHC-P,E
Primary Accession	Q96B23
Other Accession	Q8BH50 , NP_659492.1 , NP_001008240.1
Reactivity	Human, Mouse
Host	Rabbit
Clonality	Polyclonal
Isotype	Rabbit IgG
Calculated MW	43395
Antigen Region	163-191

CR025 Antibody (Center) - Additional Information**Gene ID** 147339**Other Names**

Uncharacterized protein C18orf25, C18orf25

Target/Specificity

This CR025 antibody is generated from rabbits immunized with a KLH conjugated synthetic peptide between 163-191 amino acids from the Central region of human CR025.

Dilution

WB~~1:1000

IHC-P~~1:50~100

Format

Purified polyclonal antibody supplied in PBS with 0.09% (W/V) sodium azide. This antibody is purified through a protein A column, followed by peptide affinity purification.

Storage

Maintain refrigerated at 2-8°C for up to 2 weeks. For long term storage store at -20°C in small aliquots to prevent freeze-thaw cycles.

Precautions

CR025 Antibody (Center) is for research use only and not for use in diagnostic or therapeutic procedures.

CR025 Antibody (Center) - Protein Information**Name** ARK2N ([HGNC:28172](#))**Function** AMPK substrate important for exercise capacity and skeletal muscle function. Required

for normal contraction-induced signaling.

Cellular Location

Nucleus.

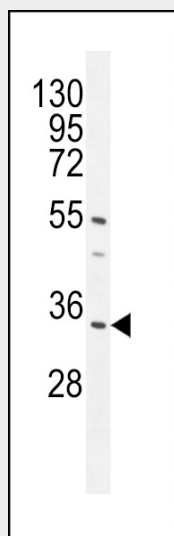
Tissue Location

Expressed in skeletal muscle.

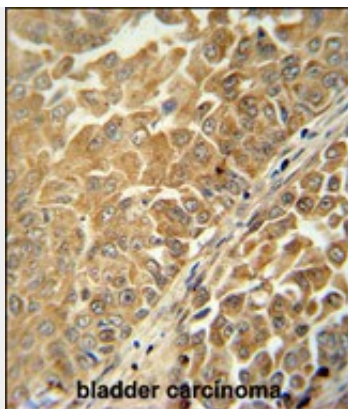
CR025 Antibody (Center) - Protocols

Provided below are standard protocols that you may find useful for product applications.

- [Western Blot](#)
- [Blocking Peptides](#)
- [Dot Blot](#)
- [Immunohistochemistry](#)
- [Immunofluorescence](#)
- [Immunoprecipitation](#)
- [Flow Cytometry](#)
- [Cell Culture](#)

CR025 Antibody (Center) - Images

CR025 Antibody (Center) (Cat. #AP11006c) western blot analysis in mouse heart tissue lysates (35ug/lane). This demonstrates the CR025 antibody detected the CR025 protein (arrow).



CR025 antibody (Center) (Cat. #AP11006c) immunohistochemistry analysis in formalin fixed and paraffin embedded human bladder carcinoma followed by peroxidase conjugation of the secondary antibody and DAB staining. This data demonstrates the use of the CR025 antibody (Center) for immunohistochemistry. Clinical relevance has not been evaluated.

CR025 Antibody (Center) - Background

The exact function of C18orf25 remains unknown. There are two named isoforms.

CR025 Antibody (Center) - References

- Trynka, G., et al. Gut 58(8):1078-1083(2009)
- Matsuoka, S., et al. Science 316(5828):1160-1166(2007)
- Olsen, J.V., et al. Cell 127(3):635-648(2006)
- Olsen, J.V., et al. Cell 127(3):635-648(2006)
- Pickard, B.S., et al. Psychiatr. Genet. 15(1):37-44(2005)