

FBXO24 Antibody (Center)
Affinity Purified Rabbit Polyclonal Antibody (Pab)
Catalog # AP11008c**Specification**

FBXO24 Antibody (Center) - Product Information

Application	WB, IHC-P, FC,E
Primary Accession	O75426
Other Accession	O9D417 , O4R327 , NP_001156971.1 , NP_277041.1 , NP_036304.2
Reactivity	Human, Mouse
Predicted	Monkey
Host	Rabbit
Clonality	Polyclonal
Isotype	Rabbit IgG
Calculated MW	64889
Antigen Region	118-145

FBXO24 Antibody (Center) - Additional Information**Gene ID** 26261**Other Names**

F-box only protein 24, FBXO24, FBX24

Target/Specificity

This FBXO24 antibody is generated from rabbits immunized with a KLH conjugated synthetic peptide between 118-145 amino acids from the Central region of human FBXO24.

Dilution

WB~~1:1000
IHC-P~~1:50~100
FC~~1:10~50

Format

Purified polyclonal antibody supplied in PBS with 0.09% (W/V) sodium azide. This antibody is purified through a protein A column, followed by peptide affinity purification.

Storage

Maintain refrigerated at 2-8°C for up to 2 weeks. For long term storage store at -20°C in small aliquots to prevent freeze-thaw cycles.

Precautions

FBXO24 Antibody (Center) is for research use only and not for use in diagnostic or therapeutic procedures.

FBXO24 Antibody (Center) - Protein Information

Name FBXO24

Synonyms FBX24

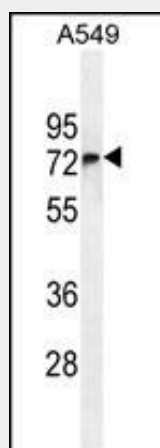
Function Substrate-recognition component of the SCF (SKP1-CUL1-F-box protein)-type E3 ubiquitin ligase complex.

FBXO24 Antibody (Center) - Protocols

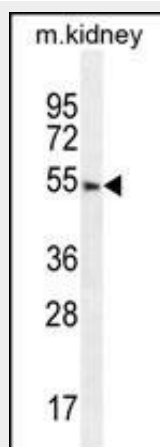
Provided below are standard protocols that you may find useful for product applications.

- [Western Blot](#)
- [Blocking Peptides](#)
- [Dot Blot](#)
- [Immunohistochemistry](#)
- [Immunofluorescence](#)
- [Immunoprecipitation](#)
- [Flow Cytometry](#)
- [Cell Culture](#)

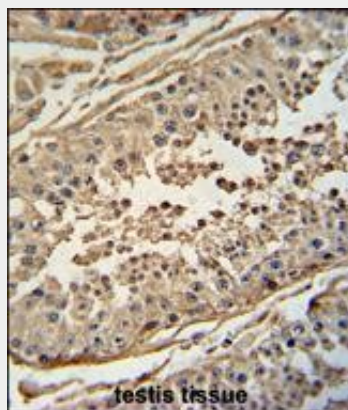
FBXO24 Antibody (Center) - Images



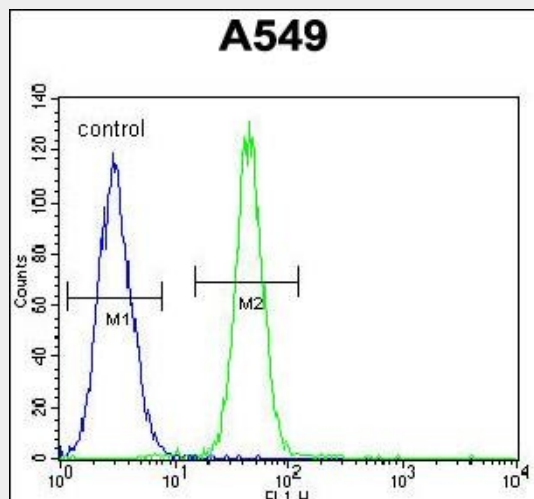
FBXO24 Antibody (Center) (Cat. #AP11008c) western blot analysis in A549 cell line lysates (35ug/lane). This demonstrates the FBXO24 antibody detected the FBXO24 protein (arrow).



FBXO24 Antibody (Center) (Cat. #AP11008c) western blot analysis in mouse kidney tissue lysates (35ug/lane). This demonstrates the FBXO24 antibody detected the FBXO24 protein (arrow).



FBXO24 antibody (Center) (Cat. #AP11008c) immunohistochemistry analysis in formalin fixed and paraffin embedded human testis tissue followed by peroxidase conjugation of the secondary antibody and DAB staining. This data demonstrates the use of the FBXO24 antibody (Center) for immunohistochemistry. Clinical relevance has not been evaluated.



FBXO24 Antibody (Center) (Cat. #AP11008c) flow cytometric analysis of A549 cells (right histogram) compared to a negative control cell (left histogram). FITC-conjugated goat-anti-rabbit secondary antibodies were used for the analysis.

FBXO24 Antibody (Center) - Background

This gene encodes a member of the F-box protein family which is characterized by an approximately 40 amino acid motif, the F-box. The F-box proteins constitute one of the four subunits of the ubiquitin protein ligase complex called SCFs (SKP1-cullin-F-box), which function in phosphorylation-dependent ubiquitination. The F-box proteins are divided into 3 classes: Fbws containing WD-40 domains, Fbls containing leucine-rich repeats, and Fbxs containing either different protein-protein interaction modules or no recognizable motifs. The protein encoded by this gene belongs to the Fbxs class. Multiple transcript variants encoding different isoforms have been found for this gene. [provided by RefSeq].

FBXO24 Antibody (Center) - References

Winston, J.T., et al. Curr. Biol. 9(20):1180-1182(1999)
Cenciarelli, C., et al. Curr. Biol. 9(20):1177-1179(1999)