

**WDR51B Antibody (C-term)**  
**Affinity Purified Rabbit Polyclonal Antibody (Pab)**  
**Catalog # AP11016b****Specification**

---

**WDR51B Antibody (C-term) - Product Information**

Application	WB, IHC-P,E
Primary Accession	<a href="#">Q8TC44</a>
Other Accession	<a href="#">NP_758440.1</a>
Reactivity	Human
Host	Rabbit
Clonality	Polyclonal
Isotype	Rabbit IgG
Calculated MW	53668
Antigen Region	321-350

**WDR51B Antibody (C-term) - Additional Information****Gene ID** 282809**Other Names**

POC1 centriolar protein homolog B, Pix1, Proteome of centriole protein 1B, WD repeat-containing protein 51B, POC1B, WDR51B

**Target/Specificity**

This WDR51B antibody is generated from rabbits immunized with a KLH conjugated synthetic peptide between 321-350 amino acids from the C-terminal region of human WDR51B.

**Dilution**

WB~~1:1000  
IHC-P~~1:50~100

**Format**

Purified polyclonal antibody supplied in PBS with 0.09% (W/V) sodium azide. This antibody is purified through a protein A column, followed by peptide affinity purification.

**Storage**

Maintain refrigerated at 2-8°C for up to 2 weeks. For long term storage store at -20°C in small aliquots to prevent freeze-thaw cycles.

**Precautions**

WDR51B Antibody (C-term) is for research use only and not for use in diagnostic or therapeutic procedures.

**WDR51B Antibody (C-term) - Protein Information****Name** POC1B ([HGNC:30836](#))

## Synonyms WDR51B

**Function** Plays an important role in centriole assembly and/or stability and ciliogenesis (PubMed:[20008567](#), PubMed:[32060285](#)). Involved in early steps of centriole duplication, as well as in the later steps of centriole length control (PubMed:[19109428](#)). Acts in concert with POC1A to ensure centriole integrity and proper mitotic spindle formation (PubMed:[32060285](#)). Required for primary cilia formation, ciliary length and also cell proliferation (PubMed:[23015594](#)). Required for retinal integrity (PubMed:[25044745](#)).

## Cellular Location

Cytoplasm, cytoskeleton, microtubule organizing center, centrosome. Cytoplasm, cytoskeleton, microtubule organizing center, centrosome, centriole. Cytoplasm, cytoskeleton, cilium basal body. Cytoplasm, cytoskeleton, spindle pole. Note=Component of both mother and daughter centrioles (PubMed:32060285). Localizes to the basal body and centriole adjacent to the connecting cilium of photoreceptors and in synapses of the outer plexiform layer. {ECO:0000250|UniProtKB:Q8BHD1, ECO:0000269|PubMed:32060285}

## Tissue Location

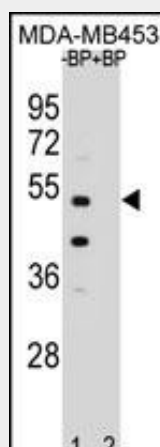
Expressed in the retina.

## WDR51B Antibody (C-term) - Protocols

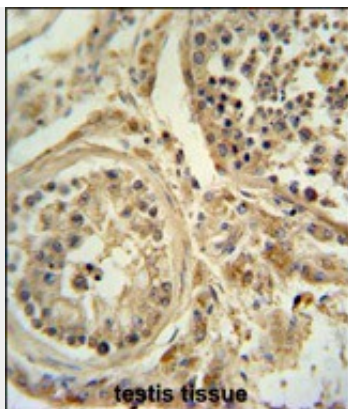
Provided below are standard protocols that you may find useful for product applications.

- [Western Blot](#)
- [Blocking Peptides](#)
- [Dot Blot](#)
- [Immunohistochemistry](#)
- [Immunofluorescence](#)
- [Immunoprecipitation](#)
- [Flow Cytometry](#)
- [Cell Culture](#)

## WDR51B Antibody (C-term) - Images



Western blot analysis of WDR51B Antibody (C-term) Pab (Cat. #AP11016b) pre-incubated without (lane 1) and with (lane 2) blocking peptide in MDA-MB453 cell line lysate. WDR51B Antibody (C-term) (arrow) was detected using the purified Pab.



WDR51B antibody (C-term) (Cat. #AP11016b) immunohistochemistry analysis in formalin fixed and paraffin embedded human testis tissue followed by peroxidase conjugation of the secondary antibody and DAB staining. This data demonstrates the use of the WDR51B antibody (C-term) for immunohistochemistry. Clinical relevance has not been evaluated.

#### **WDR51B Antibody (C-term) - Background**

Required for ciliogenesis.

#### **WDR51B Antibody (C-term) - References**

Rose, J.E., et al. Mol. Med. 16 (7-8), 247-253 (2010) : Pearson, C.G., et al. J. Cell Biol. 187(6):905-920(2009) Keller, L.C., et al. Mol. Biol. Cell 20(4):1150-1166(2009) Hames, R.S., et al. Exp. Cell Res. 314(3):574-589(2008) Lamesch, P., et al. Genomics 89(3):307-315(2007)