

**LRC40 Antibody (C-term)**  
**Affinity Purified Rabbit Polyclonal Antibody (Pab)**  
**Catalog # AP11024b****Specification**

---

**LRC40 Antibody (C-term) - Product Information**

Application	WB, IHC-P, FC,E
Primary Accession	<a href="#">O9H9A6</a>
Other Accession	<a href="#">O9CRC8</a> , <a href="#">O4R3P6</a> , <a href="#">NP_060238.3</a>
Reactivity	Human
Predicted	Monkey, Mouse
Host	Rabbit
Clonality	Polyclonal
Isotype	Rabbit IgG
Calculated MW	68250
Antigen Region	343-371

**LRC40 Antibody (C-term) - Additional Information****Gene ID** 55631**Other Names**

Leucine-rich repeat-containing protein 40, LRRC40

**Target/Specificity**

This LRC40 antibody is generated from rabbits immunized with a KLH conjugated synthetic peptide between 343-371 amino acids from the C-terminal region of human LRC40.

**Dilution**

WB~~1:1000  
IHC-P~~1:50~100  
FC~~1:10~50

**Format**

Purified polyclonal antibody supplied in PBS with 0.09% (W/V) sodium azide. This antibody is purified through a protein A column, followed by peptide affinity purification.

**Storage**

Maintain refrigerated at 2-8°C for up to 2 weeks. For long term storage store at -20°C in small aliquots to prevent freeze-thaw cycles.

**Precautions**

LRC40 Antibody (C-term) is for research use only and not for use in diagnostic or therapeutic procedures.

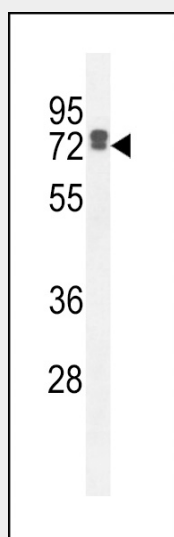
**LRC40 Antibody (C-term) - Protein Information****Name** LRRC40

## LRC40 Antibody (C-term) - Protocols

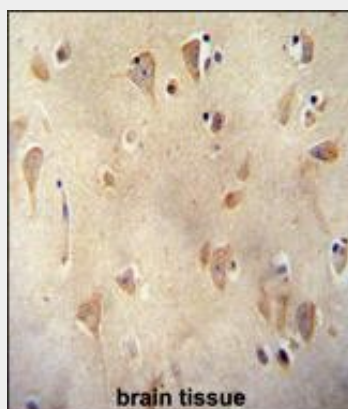
Provided below are standard protocols that you may find useful for product applications.

- [Western Blot](#)
- [Blocking Peptides](#)
- [Dot Blot](#)
- [Immunohistochemistry](#)
- [Immunofluorescence](#)
- [Immunoprecipitation](#)
- [Flow Cytometry](#)
- [Cell Culture](#)

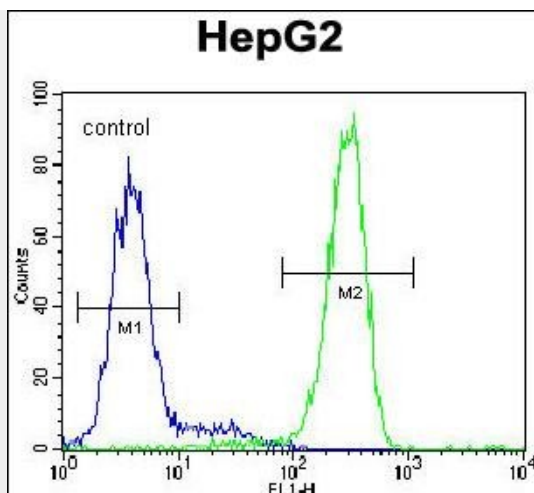
## LRC40 Antibody (C-term) - Images



LRC40 Antibody (C-term) (Cat. #AP11024b) western blot analysis in HepG2 cell line lysates (35ug/lane). This demonstrates the LRC40 antibody detected the LRC40 protein (arrow).



LRC40 antibody (C-term) (Cat. #AP11024b) immunohistochemistry analysis in formalin fixed and paraffin embedded human brain tissue followed by peroxidase conjugation of the secondary antibody and DAB staining. This data demonstrates the use of the LRC40 antibody (C-term) for immunohistochemistry. Clinical relevance has not been evaluated.



LRC40 Antibody (C-term) (Cat. #AP11024b) flow cytometric analysis of HepG2 cells (right histogram) compared to a negative control cell (left histogram). FITC-conjugated goat-anti-rabbit secondary antibodies were used for the analysis.

#### **LRC40 Antibody (C-term) - References**

Gregory, S.G., et al. Nature 441(7091):315-321(2006)  
Kimura, K., et al. Genome Res. 16(1):55-65(2006)