

RILPL2 Antibody (Center)
Affinity Purified Rabbit Polyclonal Antibody (Pab)
Catalog # AP11028c**Specification**

RILPL2 Antibody (Center) - Product Information

Application	WB, IHC-P,E
Primary Accession	Q969X0
Other Accession	Q6IP02 , Q6AYA0 , A4IFK7 , NP_659495.1
Reactivity	Human, Hamster
Predicted	Bovine, Rat, Xenopus
Host	Rabbit
Clonality	Polyclonal
Isotype	Rabbit IgG
Calculated MW	23986
Antigen Region	120-149

RILPL2 Antibody (Center) - Additional Information**Gene ID** 196383**Other Names**

RILP-like protein 2, Rab-interacting lysosomal protein-like 2, p40phox-binding protein, RILPL2, RLP2

Target/Specificity

This RILPL2 antibody is generated from rabbits immunized with a KLH conjugated synthetic peptide between 120-149 amino acids from the Central region of human RILPL2.

Dilution

WB~~1:1000

IHC-P~~1:50~100

Format

Purified polyclonal antibody supplied in PBS with 0.09% (W/V) sodium azide. This antibody is purified through a protein A column, followed by peptide affinity purification.

Storage

Maintain refrigerated at 2-8°C for up to 2 weeks. For long term storage store at -20°C in small aliquots to prevent freeze-thaw cycles.

Precautions

RILPL2 Antibody (Center) is for research use only and not for use in diagnostic or therapeutic procedures.

RILPL2 Antibody (Center) - Protein Information**Name** RILPL2

Synonyms RLP2

Function Involved in cell shape and neuronal morphogenesis, positively regulating the establishment and maintenance of dendritic spines (By similarity). Plays a role in cellular protein transport, including protein transport away from primary cilia (By similarity). May function via activation of RAC1 and PAK1 (By similarity).

Cellular Location

Cytoplasm, cytosol. Cytoplasm, cytoskeleton, microtubule organizing center, centrosome. Cell projection, cilium

Tissue Location

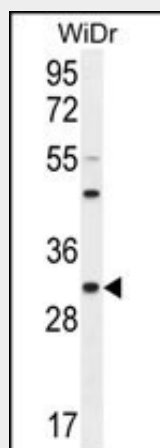
Widely expressed. Expressed at higher level in lung.

RILPL2 Antibody (Center) - Protocols

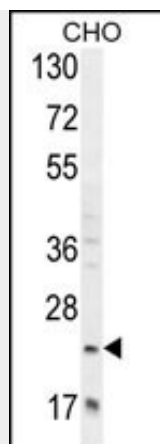
Provided below are standard protocols that you may find useful for product applications.

- [Western Blot](#)
- [Blocking Peptides](#)
- [Dot Blot](#)
- [Immunohistochemistry](#)
- [Immunofluorescence](#)
- [Immunoprecipitation](#)
- [Flow Cytometry](#)
- [Cell Culture](#)

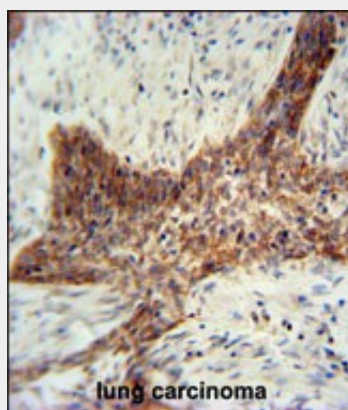
RILPL2 Antibody (Center) - Images



RILPL2 Antibody (Center) (Cat. #AP11028c) western blot analysis in WiDr cell line lysates (35ug/lane). This demonstrates the RILPL2 antibody detected the RILPL2 protein (arrow).



RILPL2 Antibody (Center) (Cat. #AP11028c) western blot analysis in CHO cell line lysates (35ug/lane). This demonstrates the RILPL2 antibody detected the RILPL2 protein (arrow).



RILPL2 antibody (Center) (Cat. #AP11028c) immunohistochemistry analysis in formalin fixed and paraffin embedded human lung carcinoma followed by peroxidase conjugation of the secondary antibody and DAB staining. This data demonstrates the use of the RILPL2 antibody (Center) for immunohistochemistry. Clinical relevance has not been evaluated.

RILPL2 Antibody (Center) - Background

Does not regulate lysosomal morphology and distribution.

RILPL2 Antibody (Center) - References

Wang, T., et al. Mol. Biol. Cell 15(2):815-826(2004)