

**RAB3IL1 Antibody (C-term)**  
**Affinity Purified Rabbit Polyclonal Antibody (Pab)**  
**Catalog # AP11035B****Specification**

---

**RAB3IL1 Antibody (C-term) - Product Information**

Application	WB, FC,E
Primary Accession	<a href="#">Q8TBN0</a>
Other Accession	<a href="#">NP_037533.2</a>
Reactivity	Human
Host	Rabbit
Clonality	Polyclonal
Isotype	Rabbit IgG
Calculated MW	42637
Antigen Region	297-325

**RAB3IL1 Antibody (C-term) - Additional Information****Gene ID** 5866**Other Names**

Guanine nucleotide exchange factor for Rab-3A, Rab-3A-interacting-like protein 1, Rab3A-interacting-like protein 1, Rabin3-like 1, RAB3IL1

**Target/Specificity**

This RAB3IL1 antibody is generated from rabbits immunized with a KLH conjugated synthetic peptide between 297-325 amino acids from the C-terminal region of human RAB3IL1.

**Dilution**

WB~~1:1000  
FC~~1:10~50

**Format**

Purified polyclonal antibody supplied in PBS with 0.09% (W/V) sodium azide. This antibody is purified through a protein A column, followed by peptide affinity purification.

**Storage**

Maintain refrigerated at 2-8°C for up to 2 weeks. For long term storage store at -20°C in small aliquots to prevent freeze-thaw cycles.

**Precautions**

RAB3IL1 Antibody (C-term) is for research use only and not for use in diagnostic or therapeutic procedures.

**RAB3IL1 Antibody (C-term) - Protein Information****Name** RAB3IL1

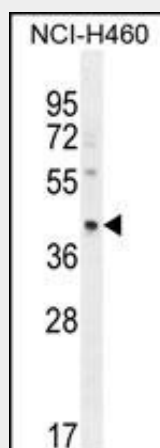
**Function** Guanine nucleotide exchange factor (GEF) which may activate RAB3A, a GTPase that regulates synaptic vesicle exocytosis. Promotes the exchange of GDP to GTP, converting inactive GDP-bound Rab proteins into their active GTP-bound form. May also activate RAB8A and RAB8B.

### **RAB3IL1 Antibody (C-term) - Protocols**

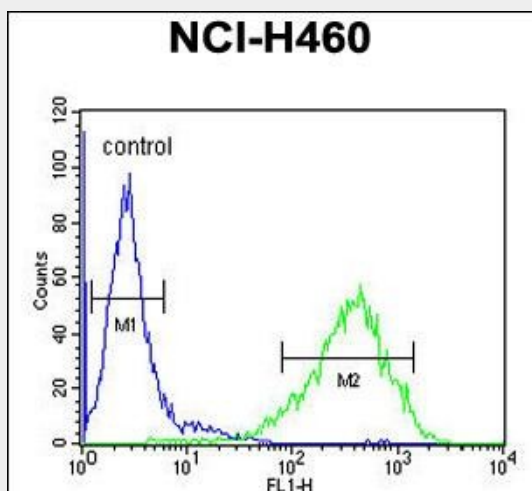
Provided below are standard protocols that you may find useful for product applications.

- [Western Blot](#)
- [Blocking Peptides](#)
- [Dot Blot](#)
- [Immunohistochemistry](#)
- [Immunofluorescence](#)
- [Immunoprecipitation](#)
- [Flow Cytometry](#)
- [Cell Culture](#)

### **RAB3IL1 Antibody (C-term) - Images**



RAB3IL1 Antibody (C-term) (Cat. #AP11035b) western blot analysis in NCI-H460 cell line lysates (35ug/lane). This demonstrates the RAB3IL1 antibody detected the RAB3IL1 protein (arrow).



RAB3IL1 Antibody (C-term) (Cat. #AP11035b) flow cytometric analysis of NCI-H460 cells (right histogram) compared to a negative control cell (left histogram). FITC-conjugated goat-anti-rabbit

secondary antibodies were used for the analysis.

#### **RAB3IL1 Antibody (C-term) - Background**

Guanine nucleotide exchange factor (GEF) for Rab3A, a GTPase that regulates synaptic vesicle exocytosis (By similarity).

#### **RAB3IL1 Antibody (C-term) - References**

Venkatesan, K., et al. Nat. Methods 6(1):83-90(2009)

Luo, H.R., et al. Neuron 31(3):439-451(2001)