

IL1R2 Antibody (Center)
Affinity Purified Rabbit Polyclonal Antibody (Pab)
Catalog # AP11048c**Specification**

IL1R2 Antibody (Center) - Product Information

Application	WB,E
Primary Accession	P27930
Other Accession	NP_004624.1 , NP_775465.1
Reactivity	Human
Host	Rabbit
Clonality	Polyclonal
Isotype	Rabbit IgG
Calculated MW	45421
Antigen Region	273-300

IL1R2 Antibody (Center) - Additional Information**Gene ID** 7850**Other Names**

Interleukin-1 receptor type 2, IL-1R-2, IL-1RT-2, IL-1RT2, CD121 antigen-like family member B, CDw121b, IL-1 type II receptor, Interleukin-1 receptor beta, IL-1R-beta, Interleukin-1 receptor type II, CD121b, Interleukin-1 receptor type 2, membrane form, mIL-1R2, mIL-1RII, Interleukin-1 receptor type 2, soluble form, sIL-1R2, sIL-1RII, IL1R2, IL1RB

Target/Specificity

This IL1R2 antibody is generated from rabbits immunized with a KLH conjugated synthetic peptide between 273-300 amino acids from the Central region of human IL1R2.

Dilution

WB~~1:1000

Format

Purified polyclonal antibody supplied in PBS with 0.09% (W/V) sodium azide. This antibody is purified through a protein A column, followed by peptide affinity purification.

Storage

Maintain refrigerated at 2-8°C for up to 2 weeks. For long term storage store at -20°C in small aliquots to prevent freeze-thaw cycles.

Precautions

IL1R2 Antibody (Center) is for research use only and not for use in diagnostic or therapeutic procedures.

IL1R2 Antibody (Center) - Protein Information**Name** IL1R2

Synonyms IL1RB

Function Non-signaling receptor for IL1A, IL1B and IL1RN. Reduces IL1B activities. Serves as a decoy receptor by competitive binding to IL1B and preventing its binding to IL1R1. Also modulates cellular response through non-signaling association with IL1RAP after binding to IL1B. IL1R2 (membrane and secreted forms) preferentially binds IL1B and poorly IL1A and IL1RN. The secreted IL1R2 recruits secreted IL1RAP with high affinity; this complex formation may be the dominant mechanism for neutralization of IL1B by secreted/soluble receptors.

Cellular Location

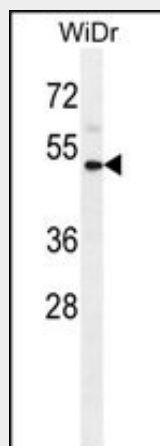
[Isoform Short]: Secreted

IL1R2 Antibody (Center) - Protocols

Provided below are standard protocols that you may find useful for product applications.

- [Western Blot](#)
- [Blocking Peptides](#)
- [Dot Blot](#)
- [Immunohistochemistry](#)
- [Immunofluorescence](#)
- [Immunoprecipitation](#)
- [Flow Cytometry](#)
- [Cell Culture](#)

IL1R2 Antibody (Center) - Images



IL1R2 Antibody (Center) (Cat. #AP11048c) western blot analysis in WiDr cell line lysates (35ug/lane). This demonstrates the IL1R2 antibody detected the IL1R2 protein (arrow).

IL1R2 Antibody (Center) - Background

The protein encoded by this gene is a cytokine receptor that belongs to the interleukin 1 receptor family. This protein binds interleukin alpha (IL1A), interleukin beta (IL1B), and interleukin 1 receptor, type I (IL1R1/IL1RA), and acts as a decoy receptor that inhibits the activity of its ligands. Interleukin 4 (IL4) is reported to antagonize the activity of interleukin 1 by inducing the expression and release of this cytokine. This gene and three other genes form a cytokine receptor gene cluster on

chromosome 2q12. Two alternatively spliced transcript variants encoding the same protein have been reported.

IL1R2 Antibody (Center) - References

Giroux, S., et al. Bone 47(5):975-981(2010)
Romero, R., et al. Am. J. Obstet. Gynecol. 203 (4), 361 (2010) :
Bailey, S.D., et al. Diabetes Care 33(10):2250-2253(2010)
Chen, C., et al. Rheumatol. Int. (2010) In press :
Schuurhof, A., et al. Pediatr. Pulmonol. 45(6):608-613(2010)