

SULT1C3 Antibody (C-term)
Affinity Purified Rabbit Polyclonal Antibody (Pab)
Catalog # AP11072b**Specification**

SULT1C3 Antibody (C-term) - Product Information

Application	WB,E
Primary Accession	Q6IMI6
Other Accession	NP_001008743.1
Reactivity	Human
Host	Rabbit
Clonality	Polyclonal
Isotype	Rabbit IgG
Calculated MW	35889
Antigen Region	264-292

SULT1C3 Antibody (C-term) - Additional Information**Gene ID** 442038**Other Names**

Sulfotransferase 1C3, ST1C3, SULT1C3

Target/Specificity

This SULT1C3 antibody is generated from rabbits immunized with a KLH conjugated synthetic peptide between 264-292 amino acids from the C-terminal region of human SULT1C3.

Dilution

WB~~1:1000

Format

Purified polyclonal antibody supplied in PBS with 0.09% (W/V) sodium azide. This antibody is purified through a protein A column, followed by peptide affinity purification.

Storage

Maintain refrigerated at 2-8°C for up to 2 weeks. For long term storage store at -20°C in small aliquots to prevent freeze-thaw cycles.

Precautions

SULT1C3 Antibody (C-term) is for research use only and not for use in diagnostic or therapeutic procedures.

SULT1C3 Antibody (C-term) - Protein Information**Name** SULT1C3

Function [Isoform 1]: Sulfotransferase that utilizes 3'-phospho-5'- adenylyl sulfate (PAPS) as sulfonate donor. Has sulfotransferase activity towards various substrates, such as bile acids,

thyroid hormones and toward xenobiotic compounds such as chloro phenols and hydroxypyrenes. Lithocholic acid appears to be the best substrate among the endogenous compounds tested and 3,3',5,5'-tetrachloro-4,4'- biphenyldiol shows the highest specific activity among the xenobiotic compounds.

Cellular Location

Cytoplasm {ECO:0000250|UniProtKB:Q80VR3}.

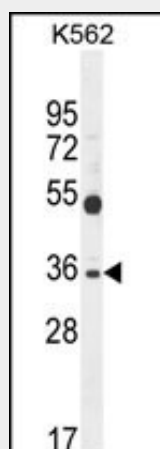
Tissue Location

[Isoform 1]: Not detectable in any of the tissues tested.

SULT1C3 Antibody (C-term) - Protocols

Provided below are standard protocols that you may find useful for product applications.

- [Western Blot](#)
- [Blocking Peptides](#)
- [Dot Blot](#)
- [Immunohistochemistry](#)
- [Immunofluorescence](#)
- [Immunoprecipitation](#)
- [Flow Cytometry](#)
- [Cell Culture](#)

SULT1C3 Antibody (C-term) - Images

SULT1C3 Antibody (C-term) (Cat. #AP11072b) western blot analysis in K562 cell line lysates (35ug/lane). This demonstrates the SULT1C3 antibody detected the SULT1C3 protein (arrow).

SULT1C3 Antibody (C-term) - Background

Has low sulphotransferase activity towards various substrates with alcohol groups (in vitro). May catalyze the sulfate conjugation of xenobiotic compounds and endogenous substrates.

SULT1C3 Antibody (C-term) - References

Rose, J.E., et al. Mol. Med. 16 (7-8), 247-253 (2010) :
Meinl, W., et al. Food Chem. Toxicol. 46(4):1249-1256(2008)
Allali-Hassani, A., et al. PLoS Biol. 5 (5), E97 (2007) :
Hillier, L.W., et al. Nature 434(7034):724-731(2005)

Freimuth, R.R., et al. Pharmacogenomics J. 4(1):54-65(2004)