

CCNB1 Antibody (C-term)
Purified Rabbit Polyclonal Antibody (Pab)
Catalog # AP11102b**Specification**

CCNB1 Antibody (C-term) - Product Information

Application	WB, IHC-P,E
Primary Accession	P14635
Other Accession	NP_114172.1
Reactivity	Human
Host	Rabbit
Clonality	Polyclonal
Isotype	Rabbit IgG
Calculated MW	48337
Antigen Region	381-411

CCNB1 Antibody (C-term) - Additional Information**Gene ID** 891**Other Names**

G2/mitotic-specific cyclin-B1, CCNB1, CCNB

Target/Specificity

This CCNB1 antibody is generated from rabbits immunized with a KLH conjugated synthetic peptide between 381-411 amino acids from the C-terminal region of human CCNB1.

Dilution

WB~~1:1000

IHC-P~~1:50~100

Format

Purified polyclonal antibody supplied in PBS with 0.09% (W/V) sodium azide. This antibody is prepared by Saturated Ammonium Sulfate (SAS) precipitation followed by dialysis against PBS.

Storage

Maintain refrigerated at 2-8°C for up to 2 weeks. For long term storage store at -20°C in small aliquots to prevent freeze-thaw cycles.

Precautions

CCNB1 Antibody (C-term) is for research use only and not for use in diagnostic or therapeutic procedures.

CCNB1 Antibody (C-term) - Protein Information**Name** CCNB1**Synonyms** CCNB

Function Essential for the control of the cell cycle at the G2/M (mitosis) transition.

Cellular Location

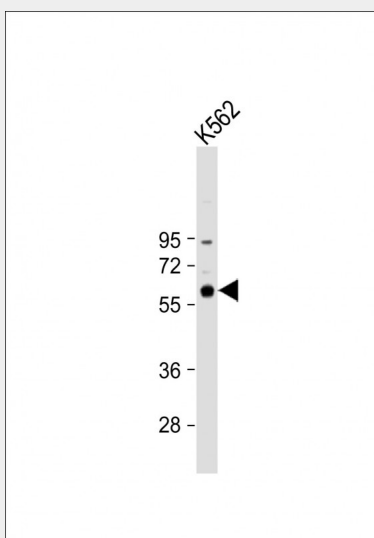
Cytoplasm. Nucleus. Cytoplasm, cytoskeleton, microtubule organizing center, centrosome

CCNB1 Antibody (C-term) - Protocols

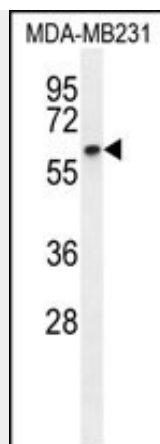
Provided below are standard protocols that you may find useful for product applications.

- [Western Blot](#)
- [Blocking Peptides](#)
- [Dot Blot](#)
- [Immunohistochemistry](#)
- [Immunofluorescence](#)
- [Immunoprecipitation](#)
- [Flow Cytometry](#)
- [Cell Culture](#)

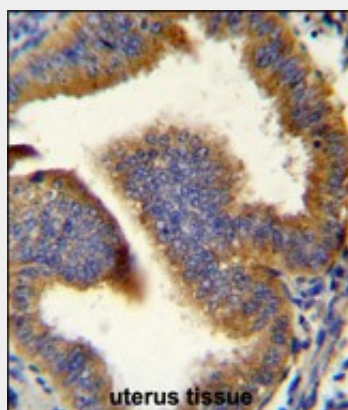
CCNB1 Antibody (C-term) - Images



Anti-CCNB1 Antibody (C-term) at 1:1000 dilution + K562 whole cell lysate Lysates/proteins at 20 µg per lane. Secondary Goat Anti-Rabbit IgG, (H+L), Peroxidase conjugated at 1/10000 dilution. Predicted band size : 48 kDa Blocking/Dilution buffer: 5% NFDM/TBST.



CCNB1 Antibody (C-term) (Cat. #AP11102b) western blot analysis in MDA-MB231 cell line lysates (35ug/lane). This demonstrates the CCNB1 antibody detected the CCNB1 protein (arrow).



CCNB1 Antibody (C-term) (Cat. #AP11102b) immunohistochemistry analysis in formalin fixed and paraffin embedded human uterus tissue followed by peroxidase conjugation of the secondary antibody and DAB staining. This data demonstrates the use of CCNB1 Antibody (C-term) for immunohistochemistry. Clinical relevance has not been evaluated.

CCNB1 Antibody (C-term) - Background

The protein encoded by this gene is a regulatory protein involved in mitosis. The gene product complexes with p34(cdc2) to form the maturation-promoting factor (MPF). Two alternative transcripts have been found, a constitutively expressed transcript and a cell cycle-regulated transcript, that is expressed predominantly during G2/M phase. The different transcripts result from the use of alternate transcription initiation sites. [provided by RefSeq].

CCNB1 Antibody (C-term) - References

Kreis, N.N., et al. Oncogene 29(41):5591-5603(2010)
van Zon, W., et al. J. Cell Biol. 190(4):587-602(2010)
Harley, M.E., et al. EMBO J. 29(14):2407-2420(2010)
Olson, J.E., et al. Breast Cancer Res. Treat. (2010) In press :
Nantajit, D., et al. PLoS ONE 5 (8), E12341 (2010) :