

GCDFP-15 Antibody (C-term)
Affinity Purified Rabbit Polyclonal Antibody (Pab)
Catalog # AP11122B**Specification**

GCDFP-15 Antibody (C-term) - Product Information

Application	IF, WB, IHC-P,E
Primary Accession	P12273
Other Accession	NP_002643.1
Reactivity	Human
Host	Rabbit
Clonality	Polyclonal
Isotype	Rabbit IgG
Calculated MW	16572
Antigen Region	77-106

GCDFP-15 Antibody (C-term) - Additional Information**Gene ID** 5304**Other Names**

Prolactin-inducible protein, Gross cystic disease fluid protein 15, GCDFP-15, Prolactin-induced protein, Secretory actin-binding protein, SABP, gp17, PIP, GCDFP15, GPIP4

Target/Specificity

This GCDFP-15 antibody is generated from rabbits immunized with a KLH conjugated synthetic peptide between 77-106 amino acids from the C-terminal region of human GCDFP-15.

Dilution

IF~~1:10~50
WB~~1:1000
IHC-P~~1:10~50

Format

Purified polyclonal antibody supplied in PBS with 0.09% (W/V) sodium azide. This antibody is purified through a protein A column, followed by peptide affinity purification.

Storage

Maintain refrigerated at 2-8°C for up to 2 weeks. For long term storage store at -20°C in small aliquots to prevent freeze-thaw cycles.

Precautions

GCDFP-15 Antibody (C-term) is for research use only and not for use in diagnostic or therapeutic procedures.

GCDFP-15 Antibody (C-term) - Protein Information**Name** PIP

Synonyms GCDFP15, GPIP4

Cellular Location
Secreted.

Tissue Location

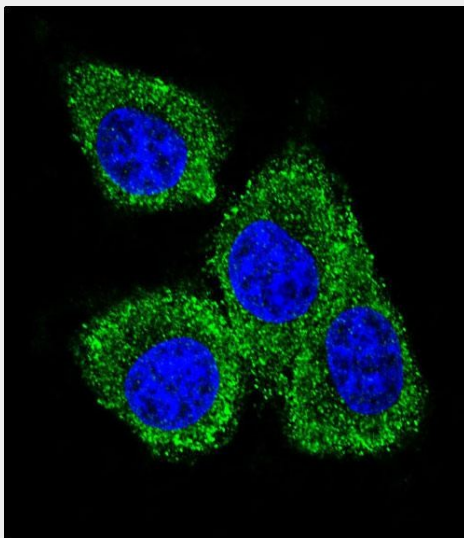
Expressed in pathological conditions of the mammary gland and in several exocrine tissues, such as the lacrimal, salivary, and sweat glands

GCDFP-15 Antibody (C-term) - Protocols

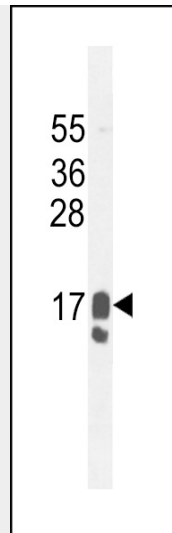
Provided below are standard protocols that you may find useful for product applications.

- [Western Blot](#)
- [Blocking Peptides](#)
- [Dot Blot](#)
- [Immunohistochemistry](#)
- [Immunofluorescence](#)
- [Immunoprecipitation](#)
- [Flow Cytometry](#)
- [Cell Culture](#)

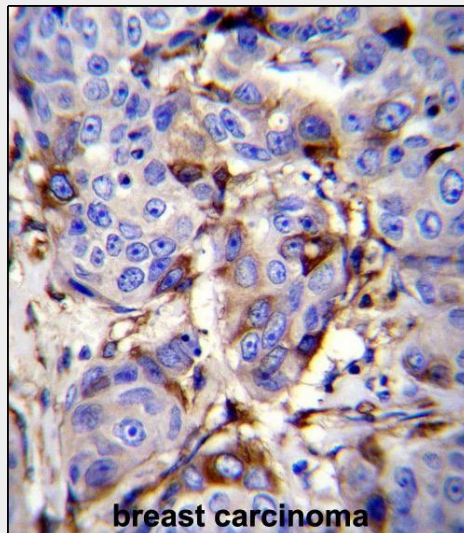
GCDFP-15 Antibody (C-term) - Images



Confocal immunofluorescent analysis of GCDFP-15 Antibody (C-term) (Cat#AP11122b) with MDA-MB231 cell followed by Alexa Fluor 488-conjugated goat anti-rabbit IgG (green). DAPI was used to stain the cell nuclear (blue).



GCDFP-15 Antibody (C-term) (Cat. #AP11122b) western blot analysis in MDA-MB231 cell line lysates (35ug/lane). This demonstrates the GCDFP-15 antibody detected the GCDFP-15 protein (arrow).



GCDFP-15 Antibody (C-term) (Cat. #AP11122b) immunohistochemistry analysis in formalin fixed and paraffin embedded human breast carcinoma followed by peroxidase conjugation of the secondary antibody and DAB staining. This data demonstrates the use of GCDFP-15 Antibody (C-term) for immunohistochemistry. Clinical relevance has not been evaluated.

GCDFP-15 Antibody (C-term) - Background

Catalyzes the addition of fucose in alpha 1-6 linkage to the first GlcNAc residue, next to the peptide chains in N-glycans.

GCDFP-15 Antibody (C-term) - References

- Bryborn, M., et al. Allergy 65(2):220-228(2010)
- Wang, L.J., et al. Appl. Immunohistochem. Mol. Morphol. 17(6):505-511(2009)
- Yan, Z., et al. Diagn. Cytopathol. 37(7):475-478(2009)
- Debily, M.A., et al. PLoS ONE 4 (3), E4696 (2009) :
- Hassan, M.I., et al. J. Mol. Biol. 384(3):663-672(2008)