

**CUZD1 Antibody (C-term)**  
**Affinity Purified Rabbit Polyclonal Antibody (Pab)**  
**Catalog # AP11139b****Specification**

---

**CUZD1 Antibody (C-term) - Product Information**

Application	IF, WB, IHC-P,E
Primary Accession	<a href="#">Q86UP6</a>
Other Accession	<a href="#">NP_071317.2</a>
Reactivity	Human
Host	Rabbit
Clonality	Polyclonal
Isotype	Rabbit IgG
Calculated MW	68153
Antigen Region	579-607

**CUZD1 Antibody (C-term) - Additional Information****Gene ID** 50624**Other Names**

CUB and zona pellucida-like domain-containing protein 1, CUB and ZP domain-containing protein 1, Transmembrane protein UO-44, CUZD1 {ECO:0000312|EMBL:CAH700061}

**Target/Specificity**

This CUZD1 antibody is generated from rabbits immunized with a KLH conjugated synthetic peptide between 579-607 amino acids from the C-terminal region of human CUZD1.

**Dilution**

IF~~1:10~50  
WB~~1:1000  
IHC-P~~1:10~50

**Format**

Purified polyclonal antibody supplied in PBS with 0.09% (W/V) sodium azide. This antibody is purified through a protein A column, followed by peptide affinity purification.

**Storage**

Maintain refrigerated at 2-8°C for up to 2 weeks. For long term storage store at -20°C in small aliquots to prevent freeze-thaw cycles.

**Precautions**

CUZD1 Antibody (C-term) is for research use only and not for use in diagnostic or therapeutic procedures.

**CUZD1 Antibody (C-term) - Protein Information****Name** CUZD1 {ECO:0000312|EMBL:CAH70006.1}

**Function** Localized to zymogen granules, where it functions in trypsinogen activation (By similarity). May indirectly regulate cell motility, cell-cell and cell/extracellular matrix interactions (PubMed:[15184879](#)).

**Cellular Location**

Zymogen granule membrane {ECO:0000250|UniProtKB:P70412}; Single-pass type I membrane protein {ECO:0000250|UniProtKB:P70412}

**Tissue Location**

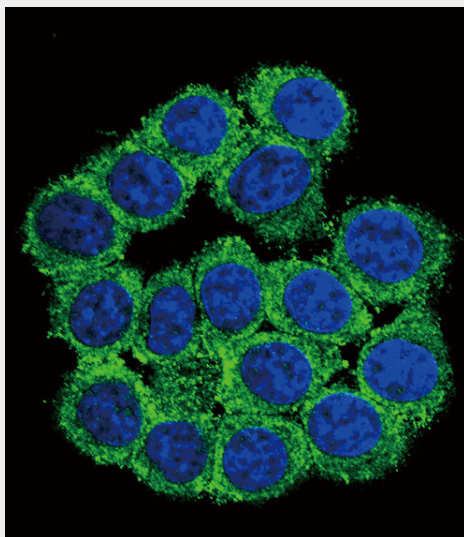
Detected in pancreas and epithelium of ovary. Expressed at higher levels in ovarian tumors than in normal tissue

**CUZD1 Antibody (C-term) - Protocols**

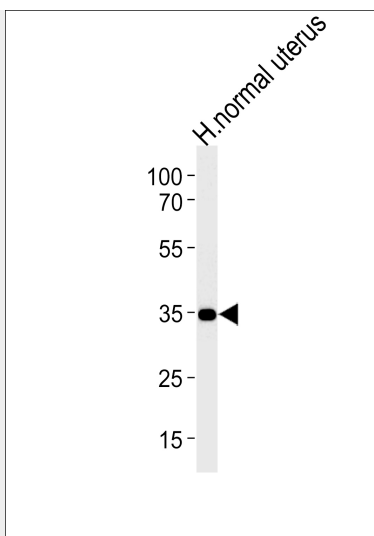
Provided below are standard protocols that you may find useful for product applications.

- [Western Blot](#)
- [Blocking Peptides](#)
- [Dot Blot](#)
- [Immunohistochemistry](#)
- [Immunofluorescence](#)
- [Immunoprecipitation](#)
- [Flow Cytometry](#)
- [Cell Culture](#)

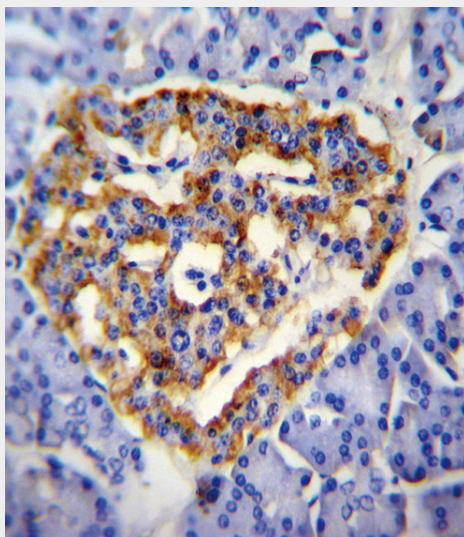
**CUZD1 Antibody (C-term) - Images**



Confocal immunofluorescent analysis of CUZD1 Antibody (C-term)(Cat#AP11139b) with 293 cell followed by Alexa Fluor<sup>®</sup> 488-conjugated goat anti-rabbit IgG (green). DAPI was used to stain the cell nuclear (blue).



CUZD1 Antibody (C-term) (Cat.# AP11139b) western blot analysis in human normal uterus tissue lysates (35ug/lane). This demonstrates the CUZD1 antibody detected the CUZD1 protein (arrow).



CUZD1 Antibody (C-term) (Cat. #AP11139b) immunohistochemistry analysis in formalin fixed and paraffin embedded human pancreas tissue followed by peroxidase conjugation of the secondary antibody and DAB staining. This data demonstrates the use of CUZD1 Antibody (C-term) for immunohistochemistry. Clinical relevance has not been evaluated.

#### **CUZD1 Antibody (C-term) - Background**

Potent and specific cellular inhibitor of CaM-kinase II (CAMK2). Traps Ca(2+)/calmodulin on CAMK2. May play an important role in the regulation of cell growth when overexpressed in colon adenocarcinoma LoVo cells. Traps Ca(2+)/calmodulin on CAMK2.

#### **CUZD1 Antibody (C-term) - References**

Leong, C.T., et al. *Oncogene* 26(6):870-880(2007) Blanchetot, C., et al. *Methods* 35(1):44-53(2005)  
Leong, C.T., et al. *Oncogene* 23(33):5707-5718(2004) Deloukas, P., et al. *Nature* 429(6990):375-381(2004) Clark, H.F., et al. *Genome Res.* 13(10):2265-2270(2003)