

**JAGN1 Antibody (N-term)**  
**Affinity Purified Rabbit Polyclonal Antibody (Pab)**  
**Catalog # AP11155a****Specification**

---

**JAGN1 Antibody (N-term) - Product Information**

Application	WB, IHC-P,E
Primary Accession	<a href="#">Q8N5M9</a>
Other Accession	<a href="#">Q4KM64</a> , <a href="#">Q5XKN4</a> , <a href="#">Q2NKY9</a> , <a href="#">NP_115881.3</a>
Reactivity	Human
Predicted	Bovine, Mouse, Rat
Host	Rabbit
Clonality	Polyclonal
Isotype	Rabbit IgG
Antigen Region	11-39

**JAGN1 Antibody (N-term) - Additional Information****Gene ID** 84522**Other Names**

Protein jagunal homolog 1, JAGN1 (<a href="http://www.genenames.org/cgi-bin/gene\_symbol\_report?hgnc\_id=26926" target="\_blank">HGNC:26926</a>)

**Target/Specificity**

This JAGN1 antibody is generated from rabbits immunized with a KLH conjugated synthetic peptide between 11-39 amino acids from the N-terminal region of human JAGN1.

**Dilution**

WB~~1:1000  
IHC-P~~1:50~100

**Format**

Purified polyclonal antibody supplied in PBS with 0.09% (W/V) sodium azide. This antibody is purified through a protein A column, followed by peptide affinity purification.

**Storage**

Maintain refrigerated at 2-8°C for up to 2 weeks. For long term storage store at -20°C in small aliquots to prevent freeze-thaw cycles.

**Precautions**

JAGN1 Antibody (N-term) is for research use only and not for use in diagnostic or therapeutic procedures.

**JAGN1 Antibody (N-term) - Protein Information****Name** JAGN1 ([HGNC:26926](#))

**Function** Endoplasmic reticulum transmembrane protein involved in vesicle-mediated transport, which is required for neutrophil function. Required for vesicle-mediated transport; it is however unclear whether it is involved in early secretory pathway or intracellular protein transport. Acts as a regulator of neutrophil function, probably via its role in vesicle-mediated transport: required for defense against fungal pathogens and for granulocyte colony-stimulating factor (GM-CSF) signaling pathway; possibly by regulating glycosylation and/or targeting of proteins contributing to the viability and migration of neutrophils.

**Cellular Location**

Endoplasmic reticulum membrane; Multi-pass membrane protein

**Tissue Location**

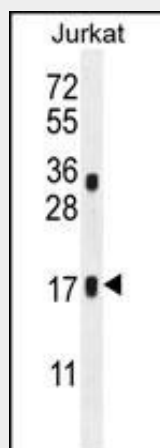
Ubiquitously expressed.

**JAGN1 Antibody (N-term) - Protocols**

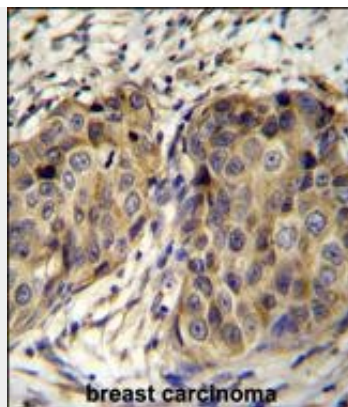
Provided below are standard protocols that you may find useful for product applications.

- [Western Blot](#)
- [Blocking Peptides](#)
- [Dot Blot](#)
- [Immunohistochemistry](#)
- [Immunofluorescence](#)
- [Immunoprecipitation](#)
- [Flow Cytometry](#)
- [Cell Culture](#)

**JAGN1 Antibody (N-term) - Images**



JAGN1 Antibody (N-term) (Cat. #AP11155a) western blot analysis in Jurkat cell line lysates (35ug/lane). This demonstrates the JAGN1 antibody detected the JAGN1 protein (arrow).



JAGN1 Antibody (N-term) (Cat. #AP11155a) immunohistochemistry analysis in formalin fixed and paraffin embedded human breast carcinoma followed by peroxidase conjugation of the secondary antibody and DAB staining. This data demonstrates the use of JAGN1 Antibody (N-term) for immunohistochemistry. Clinical relevance has not been evaluated.

#### **JAGN1 Antibody (N-term) - References**

Suzuki, Y., et al. Genome Res. 14(9):1711-1718(2004)