

**KTAP2 Antibody (C-term)**  
**Affinity Purified Rabbit Polyclonal Antibody (Pab)**  
**Catalog # AP11178b****Specification**

---

**KTAP2 Antibody (C-term) - Product Information**

Application	WB, IHC-P,E
Primary Accession	<a href="#">Q8N6L1</a>
Other Accession	<a href="#">B2RZC9</a> , <a href="#">NP_776251.1</a>
Reactivity	Human, Mouse
Predicted	Rat
Host	Rabbit
Clonality	Polyclonal
Isotype	Rabbit IgG
Calculated MW	14679
Antigen Region	134-162

**KTAP2 Antibody (C-term) - Additional Information****Gene ID** 200185**Other Names**

Keratinocyte-associated protein 2, KCP-2, KRTCAP2, KCP2

**Target/Specificity**

This KTAP2 antibody is generated from rabbits immunized with a KLH conjugated synthetic peptide between 134-162 amino acids from the C-terminal region of human KTAP2.

**Dilution**

WB~~1:1000

IHC-P~~1:10~50

**Format**

Purified polyclonal antibody supplied in PBS with 0.09% (W/V) sodium azide. This antibody is purified through a protein A column, followed by peptide affinity purification.

**Storage**

Maintain refrigerated at 2-8°C for up to 2 weeks. For long term storage store at -20°C in small aliquots to prevent freeze-thaw cycles.

**Precautions**

KTAP2 Antibody (C-term) is for research use only and not for use in diagnostic or therapeutic procedures.

**KTAP2 Antibody (C-term) - Protein Information****Name** KRTCAP2

## Synonyms KCP2

**Function** Subunit of the oligosaccharyl transferase (OST) complex that catalyzes the initial transfer of a defined glycan (Glc(3)Man(9)GlcNAc(2) in eukaryotes) from the lipid carrier dolichol-pyrophosphate to an asparagine residue within an Asn-X-Ser/Thr consensus motif in nascent polypeptide chains, the first step in protein N-glycosylation. N-glycosylation occurs cotranslationally and the complex associates with the Sec61 complex at the channel-forming translocon complex that mediates protein translocation across the endoplasmic reticulum (ER). All subunits are required for a maximal enzyme activity (PubMed:[22467853](#)). May be involved in N-glycosylation of APP (amyloid-beta precursor protein). Can modulate gamma-secretase cleavage of APP by enhancing endoproteolysis of PSEN1 (PubMed:[21768116](#)).

## Cellular Location

Endoplasmic reticulum. Endoplasmic reticulum membrane; Multi-pass membrane protein

## Tissue Location

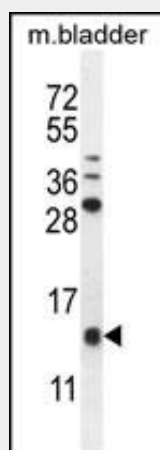
Expressed in skin, heart, placental, liver, skeletal muscle, kidney, pancreas, keratinocytes and dermal fibroblasts.

## KTAP2 Antibody (C-term) - Protocols

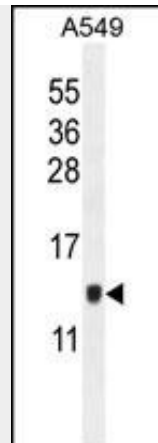
Provided below are standard protocols that you may find useful for product applications.

- [Western Blot](#)
- [Blocking Peptides](#)
- [Dot Blot](#)
- [Immunohistochemistry](#)
- [Immunofluorescence](#)
- [Immunoprecipitation](#)
- [Flow Cytometry](#)
- [Cell Culture](#)

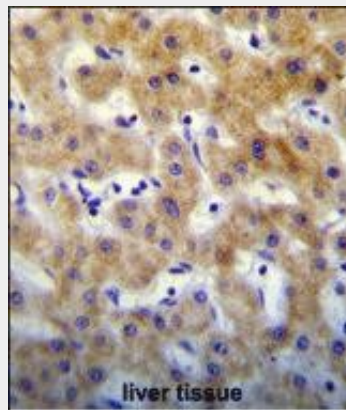
## KTAP2 Antibody (C-term) - Images



KTAP2 Antibody (C-term) (Cat. #AP11178b) western blot analysis in mouse bladder tissue lysates (35ug/lane). This demonstrates the KTAP2 antibody detected the KTAP2 protein (arrow).



KTAP2 Antibody (C-term) (Cat. #AP11178b) western blot analysis in A549 cell line lysates (35ug/lane). This demonstrates the KTAP2 antibody detected the KTAP2 protein (arrow).



KTAP2 Antibody (C-term) (Cat. #AP11178b) immunohistochemistry analysis in formalin fixed and paraffin embedded human liver tissue followed by peroxidase conjugation of the secondary antibody and DAB staining. This data demonstrates the use of KTAP2 Antibody (C-term) for immunohistochemistry. Clinical relevance has not been evaluated.

#### **KTAP2 Antibody (C-term) - Background**

E3 ubiquitin-protein ligase which accepts ubiquitin from E2 ubiquitin-conjugating enzymes UBE2L3 and UBE2L6 in the form of a thioester and then directly transfers the ubiquitin to targeted substrates, such as UCKL1. Involved in the cytolytic activity of natural killer cells and cytotoxic T-cells.

#### **KTAP2 Antibody (C-term) - References**

Shibatani, T., et al. Biochemistry 44(16):5982-5992(2005)  
Bonkobara, M., et al. Br. J. Dermatol. 148(4):654-664(2003)