

**NXPH4 Antibody (C-term)**  
**Affinity Purified Rabbit Polyclonal Antibody (Pab)**  
**Catalog # AP11180b****Specification**

---

**NXPH4 Antibody (C-term) - Product Information**

Application	WB, FC,E
Primary Accession	<a href="#">O95158</a>
Other Accession	<a href="#">O9Z2N4</a> , <a href="#">NP_009155.1</a>
Reactivity	Human
Predicted	Rat
Host	Rabbit
Clonality	Polyclonal
Isotype	Rabbit IgG
Calculated MW	33065
Antigen Region	219-248

**NXPH4 Antibody (C-term) - Additional Information****Gene ID** 11247**Other Names**

Neurexophilin-4, NXPH4, NPH4

**Target/Specificity**

This NXPH4 antibody is generated from rabbits immunized with a KLH conjugated synthetic peptide between 219-248 amino acids from the C-terminal region of human NXPH4.

**Dilution**

WB~~1:1000

FC~~1:10~50

**Format**

Purified polyclonal antibody supplied in PBS with 0.09% (W/V) sodium azide. This antibody is purified through a protein A column, followed by peptide affinity purification.

**Storage**

Maintain refrigerated at 2-8°C for up to 2 weeks. For long term storage store at -20°C in small aliquots to prevent freeze-thaw cycles.

**Precautions**

NXPH4 Antibody (C-term) is for research use only and not for use in diagnostic or therapeutic procedures.

**NXPH4 Antibody (C-term) - Protein Information****Name** NXPH4

**Synonyms** NPH4

**Function** May be signaling molecules that resemble neuropeptides and that act by binding to alpha-neurexins and possibly other receptors.

**Cellular Location**

Secreted.

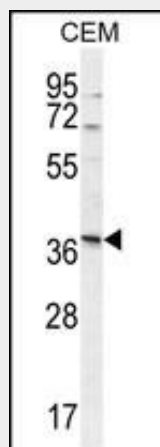
**Tissue Location**

Expressed in brain, spleen, and testis.

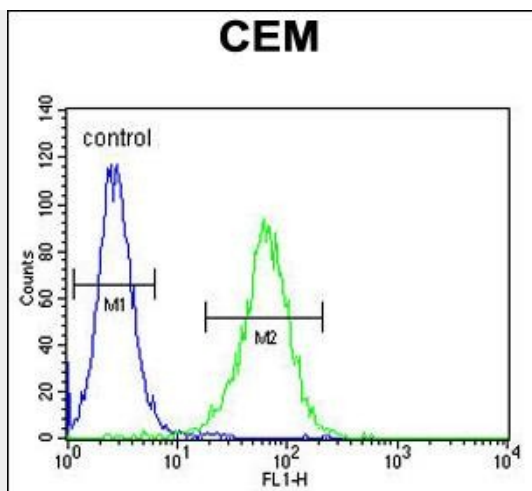
**NXPH4 Antibody (C-term) - Protocols**

Provided below are standard protocols that you may find useful for product applications.

- [Western Blot](#)
- [Blocking Peptides](#)
- [Dot Blot](#)
- [Immunohistochemistry](#)
- [Immunofluorescence](#)
- [Immunoprecipitation](#)
- [Flow Cytometry](#)
- [Cell Culture](#)

**NXPH4 Antibody (C-term) - Images**

NXPH4 Antibody (C-term) (Cat. #AP11180b) western blot analysis in CEM cell line lysates (35ug/lane). This demonstrates the NXPH4 antibody detected the NXPH4 protein (arrow).



NXP4 Antibody (C-term) (Cat. #AP11180b) flow cytometric analysis of CEM cells (right histogram) compared to a negative control cell (left histogram). FITC-conjugated goat-anti-rabbit secondary antibodies were used for the analysis.

#### **NXP4 Antibody (C-term) - Background**

An adhesion molecule that interacts with extracellular matrix molecules in developing teeth and may play important roles in differentiation and maintenance of odontoblasts as well as in dentin formation (By similarity).

#### **NXP4 Antibody (C-term) - References**

- Lamesch, P., et al. Genomics 89(3):307-315(2007)
- Clark, H.F., et al. Genome Res. 13(10):2265-2270(2003)
- Missler, M., et al. J. Neurosci. 18(10):3630-3638(1998)