

NAT12 Antibody (C-term)
Affinity Purified Rabbit Polyclonal Antibody (Pab)
Catalog # AP11188b

Specification

NAT12 Antibody (C-term) - Product Information

Application	WB, IHC-P,E
Primary Accession	Q147X3
Other Accession	Q0IHH1 , Q8CES0 , NP_001011713.2
Reactivity	Human, Mouse
Predicted	Xenopus
Host	Rabbit
Clonality	Polyclonal
Isotype	Rabbit IgG
Calculated MW	39320
Antigen Region	315-343

NAT12 Antibody (C-term) - Additional Information

Gene ID 122830

Other Names

N-alpha-acetyltransferase 30, N-acetyltransferase 12, N-acetyltransferase MAK3 homolog, NatC catalytic subunit, NAA30, C14orf35, MAK3, NAT12

Target/Specificity

This NAT12 antibody is generated from rabbits immunized with a KLH conjugated synthetic peptide between 315-343 amino acids from the C-terminal region of human NAT12.

Dilution

WB~~1:500

IHC-P~~1:10~50

Format

Purified polyclonal antibody supplied in PBS with 0.09% (W/V) sodium azide. This antibody is purified through a protein A column, followed by peptide affinity purification.

Storage

Maintain refrigerated at 2-8°C for up to 2 weeks. For long term storage store at -20°C in small aliquots to prevent freeze-thaw cycles.

Precautions

NAT12 Antibody (C-term) is for research use only and not for use in diagnostic or therapeutic procedures.

NAT12 Antibody (C-term) - Protein Information

Name NAA30

Synonyms C14orf35, MAK3, NAT12

Function Catalytic subunit of the N-terminal acetyltransferase C (NatC) complex. Catalyzes acetylation of the N-terminal methionine residues of peptides beginning with Met-Leu-Ala and Met-Leu-Gly. Necessary for the lysosomal localization and function of ARL8B suggesting that ARL8B is a NatC substrate.

Cellular Location

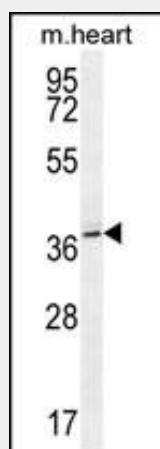
Cytoplasm. Nucleus

NAT12 Antibody (C-term) - Protocols

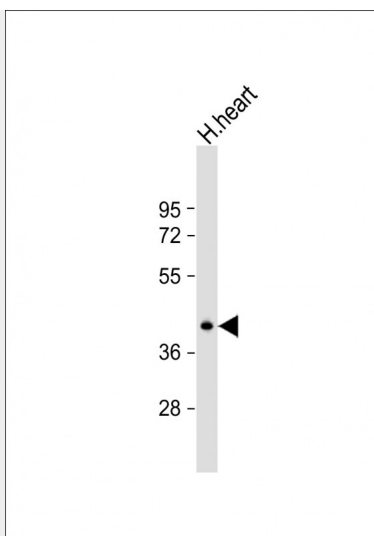
Provided below are standard protocols that you may find useful for product applications.

- [Western Blot](#)
- [Blocking Peptides](#)
- [Dot Blot](#)
- [Immunohistochemistry](#)
- [Immunofluorescence](#)
- [Immunoprecipitation](#)
- [Flow Cytometry](#)
- [Cell Culture](#)

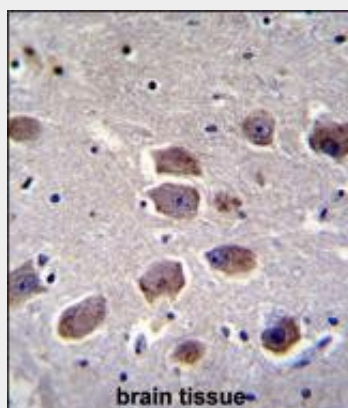
NAT12 Antibody (C-term) - Images



NAT12 Antibody (C-term) (Cat. #AP11188b) western blot analysis in mouse heart tissue lysates (35ug/lane). This demonstrates the NAT12 antibody detected the NAT12 protein (arrow).



Anti-NAT12 Antibody (C-term) at 1:500 dilution + human heart lysate Lysates/proteins at 20 µg per lane. Secondary Goat Anti-Rabbit IgG, (H+L), Peroxidase conjugated at 1/10000 dilution. Predicted band size : 39 kDa Blocking/Dilution buffer: 5% NFDM/TBST.



NAT12 Antibody (C-term) (Cat. #AP11188b) immunohistochemistry analysis in formalin fixed and paraffin embedded human brain tissue followed by peroxidase conjugation of the secondary antibody and DAB staining. This data demonstrates the use of NAT12 Antibody (C-term) for immunohistochemistry. Clinical relevance has not been evaluated.

NAT12 Antibody (C-term) - References

Polevoda, B., et al. BMC Proc 3 SUPPL 6, S2 (2009) :