

**LRRC68 Antibody (N-term)**  
**Affinity Purified Rabbit Polyclonal Antibody (Pab)**  
**Catalog # AP11194a****Specification**

---

**LRRC68 Antibody (N-term) - Product Information**

Application	WB, IHC-P,E
Primary Accession	<a href="#">O75864</a>
Other Accession	<a href="#">B2RYF1</a> , <a href="#">Q8BKR5</a> , <a href="#">Q1L994</a> , <a href="#">A7Z026</a>
Reactivity	Mouse
Predicted	Bovine, Zebrafish, Rat
Host	Rabbit
Clonality	Polyclonal
Isotype	Rabbit IgG
Calculated MW	74767
Antigen Region	36-64

**LRRC68 Antibody (N-term) - Additional Information****Gene ID** 284352**Other Names**

Protein phosphatase 1 regulatory subunit 37, Leucine-rich repeat-containing protein 68, PPP1R37, KIAA1986, LRRC68

**Target/Specificity**

This LRRC68 antibody is generated from rabbits immunized with a KLH conjugated synthetic peptide between 36-64 amino acids from the N-terminal region of human LRRC68.

**Dilution**

WB~~1:1000

IHC-P~~1:10~50

**Format**

Purified polyclonal antibody supplied in PBS with 0.09% (W/V) sodium azide. This antibody is purified through a protein A column, followed by peptide affinity purification.

**Storage**

Maintain refrigerated at 2-8°C for up to 2 weeks. For long term storage store at -20°C in small aliquots to prevent freeze-thaw cycles.

**Precautions**

LRRC68 Antibody (N-term) is for research use only and not for use in diagnostic or therapeutic procedures.

**LRRC68 Antibody (N-term) - Protein Information****Name** PPP1R37

**Synonyms** KIAA1986, LRRC68

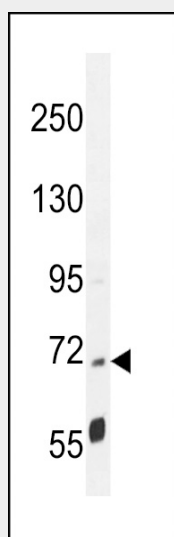
**Function** Inhibits phosphatase activity of protein phosphatase 1 (PP1) complexes.

### LRRC68 Antibody (N-term) - Protocols

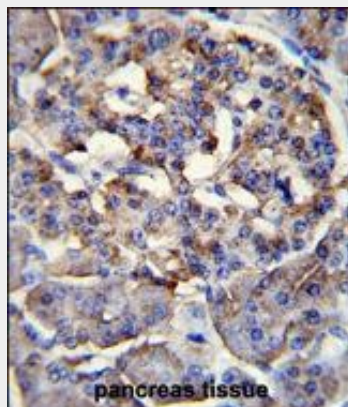
Provided below are standard protocols that you may find useful for product applications.

- [Western Blot](#)
- [Blocking Peptides](#)
- [Dot Blot](#)
- [Immunohistochemistry](#)
- [Immunofluorescence](#)
- [Immunoprecipitation](#)
- [Flow Cytometry](#)
- [Cell Culture](#)

### LRRC68 Antibody (N-term) - Images



LRRC68 Antibody (N-term) (Cat. #AP11194a) western blot analysis in mouse cerebellum tissue lysates (35ug/lane). This demonstrates the LRRC68 antibody detected the LRRC68 protein (arrow).



LRRC68 Antibody (N-term) (Cat. #AP11194a) immunohistochemistry analysis in formalin fixed and paraffin embedded human pancreas tissue followed by peroxidase conjugation of the secondary

antibody and DAB staining. This data demonstrates the use of LRRC68 Antibody (N-term) for immunohistochemistry. Clinical relevance has not been evaluated.

**LRRC68 Antibody (N-term) - Background**

Guanine-nucleotide-releasing protein that acts on members of the SCE4/YPT1/RAB subfamily. Stimulates GDP release from both YPT1 and RAB3A, but is less active on these proteins than on the SEC4 protein. Might play a general role in vesicular transport.