

**OR2W3 Antibody (C-term)**  
**Affinity Purified Rabbit Polyclonal Antibody (Pab)**  
**Catalog # AP11259b****Specification**

---

**OR2W3 Antibody (C-term) - Product Information**

Application	WB, FC,E
Primary Accession	<a href="#">Q7Z3T1</a>
Other Accession	<a href="#">NP_001001957.2</a>
Reactivity	Human
Host	Rabbit
Clonality	Polyclonal
Isotype	Rabbit IgG
Calculated MW	34789
Antigen Region	286-314

**OR2W3 Antibody (C-term) - Additional Information****Gene ID** 343171**Other Names**

Olfactory receptor 2W3, Olfactory receptor 2W8, Olfactory receptor OR1-49, OR2W3, OR2W3P, OR2W8P

**Target/Specificity**

This OR2W3 antibody is generated from rabbits immunized with a KLH conjugated synthetic peptide between 286-314 amino acids from the C-terminal region of human OR2W3.

**Dilution**WB~~1:1000  
FC~~1:10~50**Format**

Purified polyclonal antibody supplied in PBS with 0.09% (W/V) sodium azide. This antibody is purified through a protein A column, followed by peptide affinity purification.

**Storage**

Maintain refrigerated at 2-8°C for up to 2 weeks. For long term storage store at -20°C in small aliquots to prevent freeze-thaw cycles.

**Precautions**

OR2W3 Antibody (C-term) is for research use only and not for use in diagnostic or therapeutic procedures.

**OR2W3 Antibody (C-term) - Protein Information****Name** OR2W3

**Synonyms** OR2W3P, OR2W8P

**Function** Odorant receptor.

**Cellular Location**

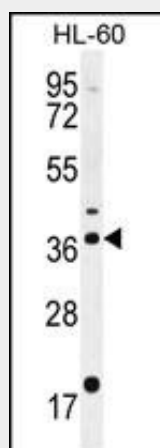
Cell membrane; Multi-pass membrane protein.

**OR2W3 Antibody (C-term) - Protocols**

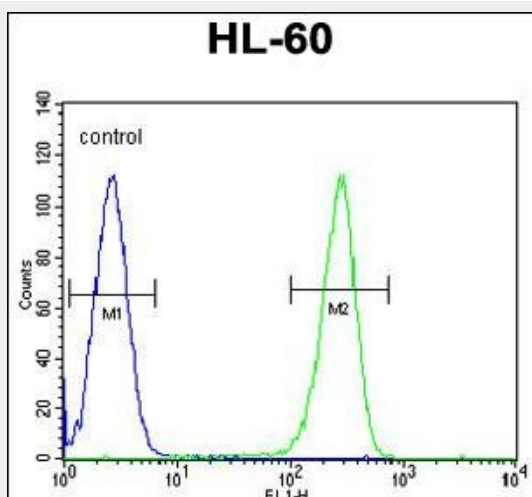
Provided below are standard protocols that you may find useful for product applications.

- [Western Blot](#)
- [Blocking Peptides](#)
- [Dot Blot](#)
- [Immunohistochemistry](#)
- [Immunofluorescence](#)
- [Immunoprecipitation](#)
- [Flow Cytometry](#)
- [Cell Culture](#)

**OR2W3 Antibody (C-term) - Images**



OR2W3 Antibody (C-term) (Cat. #AP11259b) western blot analysis in HL-60 cell line lysates (35ug/lane). This demonstrates the OR2W3 antibody detected the OR2W3 protein (arrow).



OR2W3 Antibody (C-term) (Cat. #AP11259b) flow cytometric analysis of HL-60 cells (right histogram) compared to a negative control cell (left histogram). FITC-conjugated goat-anti-rabbit secondary antibodies were used for the analysis.

#### **OR2W3 Antibody (C-term) - Background**

Olfactory receptors interact with odorant molecules in the nose, to initiate a neuronal response that triggers the perception of a smell. The olfactory receptor proteins are members of a large family of G-protein-coupled receptors (GPCR) arising from single coding-exon genes. Olfactory receptors share a 7-transmembrane domain structure with many neurotransmitter and hormone receptors and are responsible for the recognition and G protein-mediated transduction of odorant signals. The olfactory receptor gene family is the largest in the genome. The nomenclature assigned to the olfactory receptor genes and proteins for this organism is independent of other organisms.

#### **OR2W3 Antibody (C-term) - References**

Malnic, B., et al. Proc. Natl. Acad. Sci. U.S.A. 101(8):2584-2589(2004)  
Fuchs, T., et al. Genomics 80(3):295-302(2002)