

SPATA5L1 Antibody (C-term)
Affinity Purified Rabbit Polyclonal Antibody (Pab)
Catalog # AP11262b

Specification

SPATA5L1 Antibody (C-term) - Product Information

Application	WB,E
Primary Accession	O9BVQ7
Other Accession	NP_076968.1
Reactivity	Human
Host	Rabbit
Clonality	Polyclonal
Isotype	Rabbit IgG
Antigen Region	585-613

SPATA5L1 Antibody (C-term) - Additional Information

Gene ID 79029

Other Names

Spermatogenesis-associated protein 5-like protein 1, SPATA5L1

Target/Specificity

This SPATA5L1 antibody is generated from rabbits immunized with a KLH conjugated synthetic peptide between 585-613 amino acids from the C-terminal region of human SPATA5L1.

Dilution

WB~~1:1000

Format

Purified polyclonal antibody supplied in PBS with 0.09% (W/V) sodium azide. This antibody is purified through a protein A column, followed by peptide affinity purification.

Storage

Maintain refrigerated at 2-8°C for up to 2 weeks. For long term storage store at -20°C in small aliquots to prevent freeze-thaw cycles.

Precautions

SPATA5L1 Antibody (C-term) is for research use only and not for use in diagnostic or therapeutic procedures.

SPATA5L1 Antibody (C-term) - Protein Information

Name AFG2B ([HGNC:28762](#))

Function ATP-dependent chaperone, which plays an essential role in the cytoplasmic maturation steps of pre-60S ribosomal particles by promoting the release of shuttling protein RSL24D1/RLP24 from the pre- ribosomal particles (PubMed:[35354024](#)). Acts together with AFG2A, AIRIM and CINP

(PubMed:[35354024](#)).

Cellular Location

Cytoplasm. Cytoplasm, cytoskeleton, spindle. Nucleus {ECO:0000250|UniProtKB:D4A2B7}

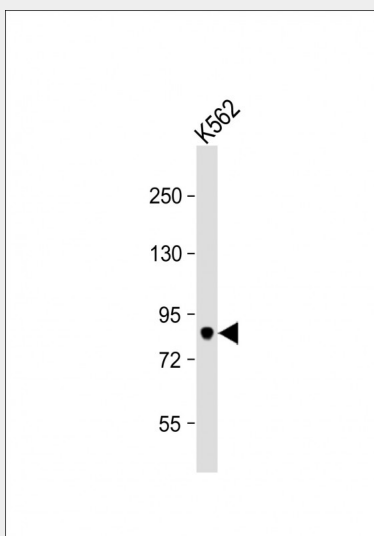
Tissue Location

Expressed in both neurons and glia during embryonic and adult stages of brain development.

SPATA5L1 Antibody (C-term) - Protocols

Provided below are standard protocols that you may find useful for product applications.

- [Western Blot](#)
- [Blocking Peptides](#)
- [Dot Blot](#)
- [Immunohistochemistry](#)
- [Immunofluorescence](#)
- [Immunoprecipitation](#)
- [Flow Cytometry](#)
- [Cell Culture](#)

SPATA5L1 Antibody (C-term) - Images

Anti-SPATA5L1 Antibody (C-term) at 1:1000 dilution + K562 whole cell lysate Lysates/proteins at 20 µg per lane. Secondary Goat Anti-Rabbit IgG, (H+L), Peroxidase conjugated at 1/10000 dilution. Predicted band size : 81 kDa Blocking/Dilution buffer: 5% NFDM/TBST.