

**C4orf21 Antibody (N-term)**  
**Affinity Purified Rabbit Polyclonal Antibody (Pab)**  
**Catalog # AP11267a****Specification**

---

**C4orf21 Antibody (N-term) - Product Information**

Application	IF, WB, IHC-P,E
Primary Accession	<a href="#">Q86YA3</a>
Other Accession	<a href="#">NP_060862.2</a>
Reactivity	Human, Mouse
Host	Rabbit
Clonality	Polyclonal
Isotype	Rabbit IgG
Calculated MW	236602
Antigen Region	38-66

**C4orf21 Antibody (N-term) - Additional Information****Gene ID** 55345**Other Names**

Protein ZGRF1, GRF-type zinc finger domain-containing protein 1, ZGRF1, C4orf21

**Target/Specificity**

This C4orf21 antibody is generated from rabbits immunized with a KLH conjugated synthetic peptide between 38-66 amino acids from the N-terminal region of human C4orf21.

**Dilution**

IF~~1:10~50

WB~~1:1000

IHC-P~~1:50~100

**Format**

Purified polyclonal antibody supplied in PBS with 0.09% (W/V) sodium azide. This antibody is purified through a protein A column, followed by peptide affinity purification.

**Storage**

Maintain refrigerated at 2-8°C for up to 2 weeks. For long term storage store at -20°C in small aliquots to prevent freeze-thaw cycles.

**Precautions**

C4orf21 Antibody (N-term) is for research use only and not for use in diagnostic or therapeutic procedures.

**C4orf21 Antibody (N-term) - Protein Information****Name** ZGRF1

**Synonyms** C4orf21

**Function** 5'-3' DNA helicase which is recruited to sites of DNA damage and promotes repair of replication-blocking DNA lesions through stimulation of homologous recombination (HR) (PubMed:[32640219](#), PubMed:[34552057](#)). Promotes HR by directly stimulating RAD51-mediated strand exchange activity (PubMed:[32640219](#)). Not required to load RAD51 at sites of DNA damage but promotes recombinational repair after RAD51 recruitment (PubMed:[32640219](#)). Also promotes HR by positively regulating EXO1-mediated DNA end resection of double-strand breaks (PubMed:[34552057](#)). Required for recruitment of replication protein RPA2 to DNA damage sites (PubMed:[34552057](#)). Promotes the initiation of the G2/M checkpoint but not its maintenance (PubMed:[34552057](#)). Catalyzes Holliday junction branch migration and dissociation of D-loops and DNA flaps (PubMed:[32640219](#)).

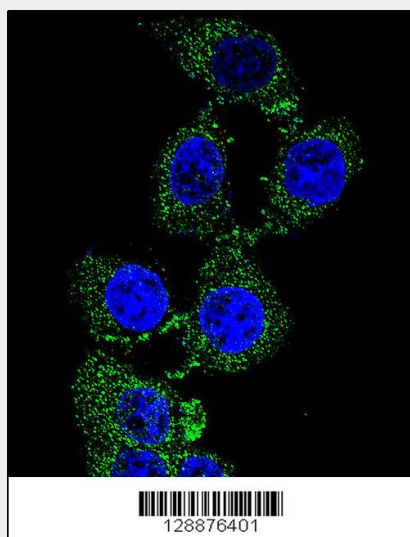
**Cellular Location**

Nucleus.

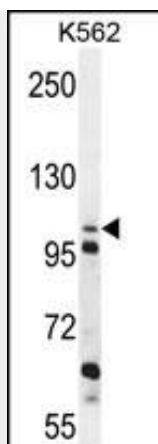
**C4orf21 Antibody (N-term) - Protocols**

Provided below are standard protocols that you may find useful for product applications.

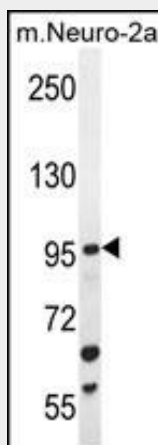
- [Western Blot](#)
- [Blocking Peptides](#)
- [Dot Blot](#)
- [Immunohistochemistry](#)
- [Immunofluorescence](#)
- [Immunoprecipitation](#)
- [Flow Cytometry](#)
- [Cell Culture](#)

**C4orf21 Antibody (N-term) - Images**

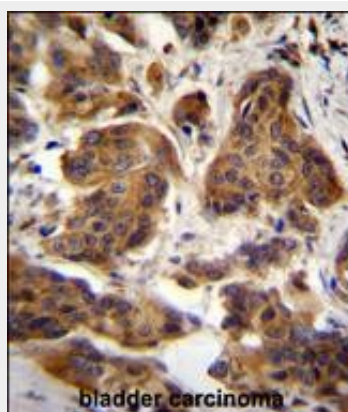
Confocal immunofluorescent analysis of C4orf21 Antibody (N-term)(Cat#AP11267a) with 293 cell followed by Alexa Fluor 488-conjugated goat anti-rabbit IgG (green). DAPI was used to stain the cell nuclear (blue).



C4orf21 Antibody (N-term) (Cat. #AP11267a) western blot analysis in K562 cell line lysates (35ug/lane). This demonstrates the C4orf21 antibody detected the C4orf21 protein (arrow).



C4orf21 Antibody (N-term) (Cat. #AP11267a) western blot analysis in mouse Neuro-2a cell line lysates (35ug/lane). This demonstrates the C4orf21 antibody detected the C4orf21 protein (arrow).



C4orf21 Antibody (N-term) (Cat. #AP11267a) immunohistochemistry analysis in formalin fixed and paraffin embedded human bladder carcinoma followed by peroxidase conjugation of the secondary antibody and DAB staining. This data demonstrates the use of C4orf21 Antibody (N-term) for immunohistochemistry. Clinical relevance has not been evaluated.