

NUDT22 Antibody (C-term)
Affinity Purified Rabbit Polyclonal Antibody (Pab)
Catalog # AP11280b**Specification**

NUDT22 Antibody (C-term) - Product Information

Application	WB, IHC-P, FC,E
Primary Accession	O9BRQ3
Other Accession	NP_001122084.1
Reactivity	Human
Host	Rabbit
Clonality	Polyclonal
Isotype	Rabbit IgG
Calculated MW	32580
Antigen Region	220-249

NUDT22 Antibody (C-term) - Additional Information**Gene ID** 84304**Other Names**

Nucleoside diphosphate-linked moiety X motif 22, Nudix motif 22, NUDT22

Target/Specificity

This NUDT22 antibody is generated from rabbits immunized with a KLH conjugated synthetic peptide between 220-249 amino acids from the C-terminal region of human NUDT22.

Dilution

WB~~1:1000
IHC-P~~1:50~100
FC~~1:10~50

Format

Purified polyclonal antibody supplied in PBS with 0.09% (W/V) sodium azide. This antibody is purified through a protein A column, followed by peptide affinity purification.

Storage

Maintain refrigerated at 2-8°C for up to 2 weeks. For long term storage store at -20°C in small aliquots to prevent freeze-thaw cycles.

Precautions

NUDT22 Antibody (C-term) is for research use only and not for use in diagnostic or therapeutic procedures.

NUDT22 Antibody (C-term) - Protein Information**Name** NUDT22

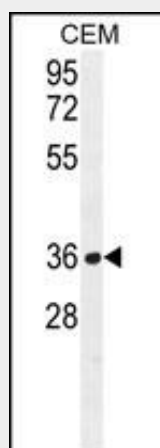
Function Hydrolyzes UDP-glucose to glucose 1-phosphate and UMP and UDP-galactose to galactose 1-phosphate and UMP. Preferred substrate is UDP-glucose.

NUDT22 Antibody (C-term) - Protocols

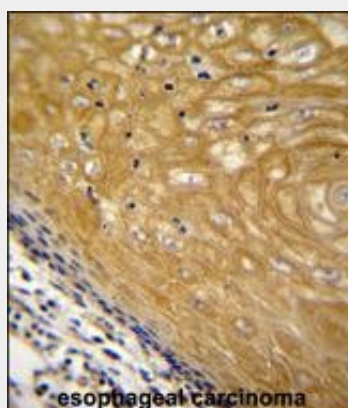
Provided below are standard protocols that you may find useful for product applications.

- [Western Blot](#)
- [Blocking Peptides](#)
- [Dot Blot](#)
- [Immunohistochemistry](#)
- [Immunofluorescence](#)
- [Immunoprecipitation](#)
- [Flow Cytometry](#)
- [Cell Culture](#)

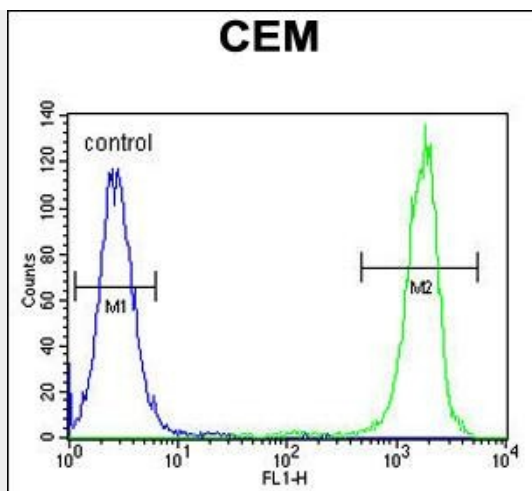
NUDT22 Antibody (C-term) - Images



NUDT22 Antibody (C-term) (Cat. #AP11280b) western blot analysis in CEM cell line lysates (35ug/lane). This demonstrates the NUDT22 antibody detected the NUDT22 protein (arrow).



NUDT22 Antibody (C-term) (Cat. #AP11280b) immunohistochemistry analysis in formalin fixed and paraffin embedded human esophageal carcinoma followed by peroxidase conjugation of the secondary antibody and DAB staining. This data demonstrates the use of NUDT22 Antibody (C-term) for immunohistochemistry. Clinical relevance has not been evaluated.



NUDT22 Antibody (C-term) (Cat. #AP11280b) flow cytometric analysis of CEM cells (right histogram) compared to a negative control cell (left histogram). FITC-conjugated goat-anti-rabbit secondary antibodies were used for the analysis.

NUDT22 Antibody (C-term) - References

- Bailey, S.D., et al. Diabetes Care 33(10):2250-2253(2010)
 Davila, S., et al. Genes Immun. 11(3):232-238(2010)
 Talmud, P.J., et al. Am. J. Hum. Genet. 85(5):628-642(2009)