

**CASP3 Antibody (C-term)**  
**Purified Rabbit Polyclonal Antibody (Pab)**  
**Catalog # AP11324b****Specification**

---

**CASP3 Antibody (C-term) - Product Information**

Application	<b>WB, IHC-P, FC,E</b>
Primary Accession	<a href="#">P42574</a>
Other Accession	<a href="#">P55213</a> , <a href="#">Q8MJC3</a> , <a href="#">P70677</a> , <a href="#">Q2PFV2</a> , <a href="#">NP_004337.2</a> , <a href="#">NP_116786.1</a>
Reactivity	<b>Human</b>
Predicted	<b>Monkey, Mouse, Rabbit, Rat</b>
Host	<b>Rabbit</b>
Clonality	<b>Polyclonal</b>
Isotype	<b>Rabbit IgG</b>
Calculated MW	<b>31608</b>
Antigen Region	<b>219-248</b>

**CASP3 Antibody (C-term) - Additional Information****Gene ID** 836**Other Names**

Caspase-3, CASP-3, Apopain, Cysteine protease CPP32, CPP-32, Protein Yama, SREBP cleavage activity 1, SCA-1, Caspase-3 subunit p17, Caspase-3 subunit p12, CASP3, CPP32

**Target/Specificity**

This CASP3 antibody is generated from rabbits immunized with a KLH conjugated synthetic peptide between 219-248 amino acids from the C-terminal region of human CASP3.

**Dilution**WB~~1:1000  
IHC-P~~1:50~100  
FC~~1:10~50**Format**

Purified polyclonal antibody supplied in PBS with 0.09% (W/V) sodium azide. This antibody is prepared by Saturated Ammonium Sulfate (SAS) precipitation followed by dialysis against PBS.

**Storage**

Maintain refrigerated at 2-8°C for up to 2 weeks. For long term storage store at -20°C in small aliquots to prevent freeze-thaw cycles.

**Precautions**

CASP3 Antibody (C-term) is for research use only and not for use in diagnostic or therapeutic procedures.

**CASP3 Antibody (C-term) - Protein Information**

**Name** CASP3**Synonyms** CPP32 {ECO:0000303|PubMed:7983002}

**Function** Thiol protease that acts as a major effector caspase involved in the execution phase of apoptosis (PubMed:[7596430](#), PubMed:[18723680](#), PubMed:[20566630](#), PubMed:[23650375](#), PubMed:[35338844](#), PubMed:[35446120](#)). Following cleavage and activation by initiator caspases (CASP8, CASP9 and/or CASP10), mediates execution of apoptosis by catalyzing cleavage of many proteins (PubMed:[7596430](#), PubMed:[18723680](#), PubMed:[20566630](#), PubMed:[23650375](#)). At the onset of apoptosis, it proteolytically cleaves poly(ADP-ribose) polymerase PARP1 at a '216-Asp-|-Gly-217' bond (PubMed:[7774019](#), PubMed:[7596430](#), PubMed:[10497198](#), PubMed:[16374543](#)). Cleaves and activates sterol regulatory element binding proteins (SREBPs) between the basic helix-loop-helix leucine zipper domain and the membrane attachment domain (By similarity). Cleaves and activates caspase-6, -7 and -9 (CASP6, CASP7 and CASP9, respectively) (PubMed:[7596430](#)). Cleaves and inactivates interleukin-18 (IL18) (PubMed:[9334240](#), PubMed:[37993714](#)). Involved in the cleavage of huntingtin (PubMed:[8696339](#)). Triggers cell adhesion in sympathetic neurons through RET cleavage (PubMed:[21357690](#)). Cleaves and inhibits serine/threonine-protein kinase AKT1 in response to oxidative stress (PubMed:[23152800](#)). Acts as an inhibitor of type I interferon production during virus-induced apoptosis by mediating cleavage of antiviral proteins CGAS, IRF3 and MAVS, thereby preventing cytokine overproduction (PubMed:[30878284](#)). Also involved in pyroptosis by mediating cleavage and activation of gasdermin-E (GSDME) (PubMed:[35446120](#), PubMed:[35338844](#)). Cleaves XRCC4 and phospholipid scramblase proteins XKR4, XKR8 and XKR9, leading to promote phosphatidylserine exposure on apoptotic cell surface (PubMed:[23845944](#), PubMed:[33725486](#)).

**Cellular Location**

Cytoplasm.

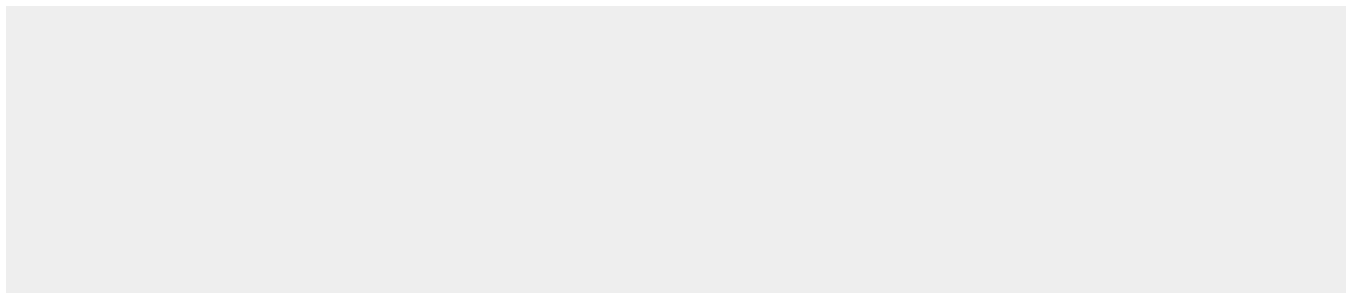
**Tissue Location**

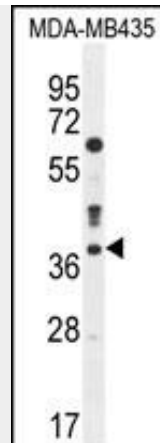
Highly expressed in lung, spleen, heart, liver and kidney. Moderate levels in brain and skeletal muscle, and low in testis. Also found in many cell lines, highest expression in cells of the immune system.

**CASP3 Antibody (C-term) - Protocols**

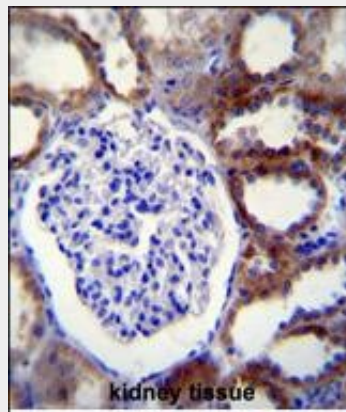
Provided below are standard protocols that you may find useful for product applications.

- [Western Blot](#)
- [Blocking Peptides](#)
- [Dot Blot](#)
- [Immunohistochemistry](#)
- [Immunofluorescence](#)
- [Immunoprecipitation](#)
- [Flow Cytometry](#)
- [Cell Culture](#)

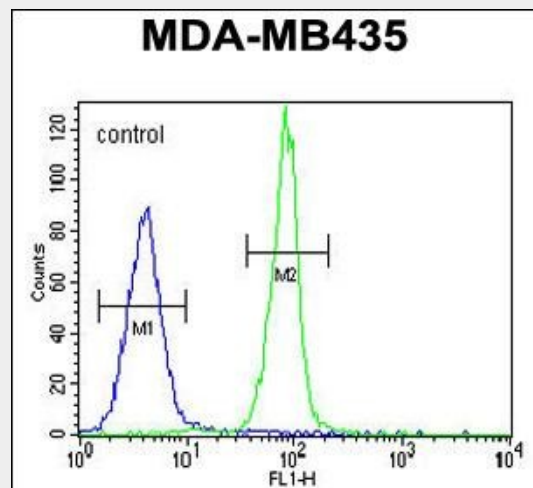
**CASP3 Antibody (C-term) - Images**



CASP3 Antibody (C-term) (Cat. #AP11324b) western blot analysis in MDA-MB435 cell line lysates (35ug/lane). This demonstrates the CASP3 antibody detected the CASP3 protein (arrow).



CASP3 Antibody (C-term) (Cat. #AP11324b) immunohistochemistry analysis in formalin fixed and paraffin embedded human kidney tissue followed by peroxidase conjugation of the secondary antibody and DAB staining. This data demonstrates the use of CASP3 Antibody (C-term) for immunohistochemistry. Clinical relevance has not been evaluated.



CASP3 Antibody (C-term) (Cat. #AP11324b) flow cytometric analysis of MDA-MB435 cells (right histogram) compared to a negative control cell (left histogram). FITC-conjugated goat-anti-rabbit secondary antibodies were used for the analysis.

**CASP3 Antibody (C-term) - Background**

This gene encodes a protein which is a member of the cysteine-aspartic acid protease (caspase) family. Sequential activation of caspases plays a central role in the execution-phase of cell apoptosis. Caspases exist as inactive proenzymes which undergo proteolytic processing at conserved aspartic residues to produce two subunits, large and small, that dimerize to form the active enzyme. This protein cleaves and activates caspases 6, 7 and 9, and the protein itself is processed by caspases 8, 9 and 10. It is the predominant caspase involved in the cleavage of amyloid-beta 4A precursor protein, which is associated with neuronal death in Alzheimer's disease. Alternative splicing of this gene results in two transcript variants that encode the same protein. [provided by RefSeq].

### **CASP3 Antibody (C-term) - References**

Wurstle, M.L., et al. J. Biol. Chem. 285(43):33209-33218(2010)  
Srikanth, C.V., et al. Science 330(6002):390-393(2010)  
Burke, S.P., et al. J. Biol. Chem. 285(39):30061-30068(2010)  
Chen, W., et al. Xi Bao Yu Fen Zi Mian Yi Xue Za Zhi 26(7):673-674(2010)  
Bellini, M.F., et al. Anticancer Res. 30(7):2845-2849(2010)

### **CASP3 Antibody (C-term) - Citations**

- [Effects of secreted frizzled-related protein 1 on proliferation, migration, invasion, and apoptosis of colorectal cancer cells.](#)