

**COCH Antibody (C-term)**  
**Affinity Purified Rabbit Polyclonal Antibody (Pab)**  
**Catalog # AP11332b****Specification**

---

**COCH Antibody (C-term) - Product Information**

Application	WB,E
Primary Accession	<a href="#">O43405</a>
Other Accession	<a href="#">O5EA64</a> , <a href="#">NP_004077.1</a> , <a href="#">NP_001128530.1</a>
Reactivity	Human
Predicted	Bovine
Host	Rabbit
Clonality	Polyclonal
Isotype	Rabbit IgG
Calculated MW	59483
Antigen Region	492-520

**COCH Antibody (C-term) - Additional Information****Gene ID** 1690**Other Names**

Cochlin, COCH-5B2, COCH, COCH5B2

**Target/Specificity**

This COCH antibody is generated from rabbits immunized with a KLH conjugated synthetic peptide between 492-520 amino acids from the C-terminal region of human COCH.

**Dilution**

WB~~1:1000

**Format**

Purified polyclonal antibody supplied in PBS with 0.09% (W/V) sodium azide. This antibody is purified through a protein A column, followed by peptide affinity purification.

**Storage**

Maintain refrigerated at 2-8°C for up to 2 weeks. For long term storage store at -20°C in small aliquots to prevent freeze-thaw cycles.

**Precautions**

COCH Antibody (C-term) is for research use only and not for use in diagnostic or therapeutic procedures.

**COCH Antibody (C-term) - Protein Information****Name** COCH**Synonyms** COCH5B2

**Function** Plays a role in the control of cell shape and motility in the trabecular meshwork.

**Cellular Location**

Secreted, extracellular space, extracellular matrix

**Tissue Location**

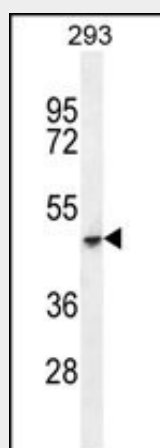
Expressed in inner ear structures; the cochlea and the vestibule

**COCH Antibody (C-term) - Protocols**

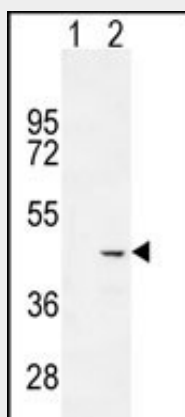
Provided below are standard protocols that you may find useful for product applications.

- [Western Blot](#)
- [Blocking Peptides](#)
- [Dot Blot](#)
- [Immunohistochemistry](#)
- [Immunofluorescence](#)
- [Immunoprecipitation](#)
- [Flow Cytometry](#)
- [Cell Culture](#)

**COCH Antibody (C-term) - Images**



COCH Antibody (C-term) (Cat. #AP11332b) western blot analysis in 293 cell line lysates (35ug/lane). This demonstrates the COCH antibody detected the COCH protein (arrow).



Western blot analysis of COCH (arrow) using rabbit polyclonal COCH Antibody (C-term) (Cat. #AP11332b). 293 cell lysates (2 ug/lane) either nontransfected (Lane 1) or transiently transfected (Lane 2) with the COCH gene.

#### **COCH Antibody (C-term) - Background**

The protein encoded by this gene is highly conserved in human, mouse, and chicken, showing 94% and 79% amino acid identity of human to mouse and chicken sequences, respectively. Hybridization to this gene was detected in spindle-shaped cells located along nerve fibers between the auditory ganglion and sensory epithelium. These cells accompany neurites at the habenula perforata, the opening through which neurites extend to innervate hair cells. This and the pattern of expression of this gene in chicken inner ear paralleled the histologic findings of acidophilic deposits, consistent with mucopolysaccharide ground substance, in temporal bones from DFNA9 (autosomal dominant nonsyndromic sensorineural deafness 9) patients. Mutations that cause DFNA9 have been reported in this gene. Alternative splicing results in multiple transcript variants encoding the same protein. Additional splice variants encoding distinct isoforms have been described but their biological validities have not been demonstrated. [provided by RefSeq].

#### **COCH Antibody (C-term) - References**

Ikezono, T., et al. Acta Otolaryngol. 130(8):881-887(2010)  
Yao, J., et al. J. Biol. Chem. 285(20):14909-14919(2010)  
Baek, J.I., et al. Clin. Genet. 77(4):399-403(2010)  
Davila, S., et al. Genes Immun. 11(3):232-238(2010)  
Lee, E.S., et al. Invest. Ophthalmol. Vis. Sci. 51(4):2060-2066(2010)