

MFS10 Antibody (Center)
Affinity Purified Rabbit Polyclonal Antibody (Pab)
Catalog # AP11346c**Specification**

MFS10 Antibody (Center) - Product Information

Application	WB,E
Primary Accession	Q14728
Other Accession	NP_001111.3 , NP_001139541.1
Reactivity	Human
Host	Rabbit
Clonality	Polyclonal
Isotype	Rabbit IgG
Calculated MW	48339
Antigen Region	245-274

MFS10 Antibody (Center) - Additional Information**Gene ID** 10227**Other Names**

Major facilitator superfamily domain-containing protein 10, Tetracycline transporter-like protein, MFSD10, TETRAN

Target/Specificity

This MFS10 antibody is generated from rabbits immunized with a KLH conjugated synthetic peptide between 245-274 amino acids from the Central region of human MFS10.

Dilution

WB~~1:1000

Format

Purified polyclonal antibody supplied in PBS with 0.09% (W/V) sodium azide. This antibody is purified through a protein A column, followed by peptide affinity purification.

Storage

Maintain refrigerated at 2-8°C for up to 2 weeks. For long term storage store at -20°C in small aliquots to prevent freeze-thaw cycles.

Precautions

MFS10 Antibody (Center) is for research use only and not for use in diagnostic or therapeutic procedures.

MFS10 Antibody (Center) - Protein Information**Name** MFSD10**Synonyms** TETRAN

Function Probable organic anion transporter which may serve as a transporter for some non-steroidal anti-inflammatory drugs (NSAIDs) as well as other organic anions across the luminal membranes of renal proximal tubules at the final excretion step into the urine.

Cellular Location

Nucleus inner membrane {ECO:0000250|UniProtKB:Q9D2V8}; Multi-pass membrane protein. Cell membrane; Multi-pass membrane protein

Tissue Location

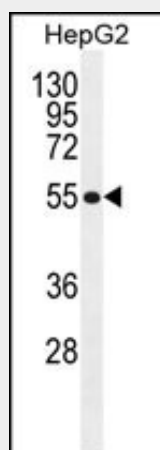
Expressed in luminal membrane of renal tubules (at protein level) (PubMed:18638446). Detected in all tissues tested with higher expression in heart, splee, kidney, leukocytes and prostate (PubMed:18638446).

MFS10 Antibody (Center) - Protocols

Provided below are standard protocols that you may find useful for product applications.

- [Western Blot](#)
- [Blocking Peptides](#)
- [Dot Blot](#)
- [Immunohistochemistry](#)
- [Immunofluorescence](#)
- [Immunoprecipitation](#)
- [Flow Cytometry](#)
- [Cell Culture](#)

MFS10 Antibody (Center) - Images



MFS10 Antibody (Center) (Cat. #AP11346c) western blot analysis in HepG2 cell line lysates (35ug/lane). This demonstrates the MFS10 antibody detected the MFS10 protein (arrow).

MFS10 Antibody (Center) - Background

This gene encodes a member of the major facilitator superfamily of transporter proteins. The encoded protein likely functions in efflux of organic anions, including the non-steroidal anti-inflammatory drugs indomethacin and diclofenac. Alternatively spliced transcript variants have been described. [provided by RefSeq].

MFS10 Antibody (Center) - References

Ushijima, H., et al. Biochem. Biophys. Res. Commun. 374(2):325-330(2008)
Mima, S., et al. FEBS Lett. 581(7):1457-1463(2007)
Duyao, M.P., et al. Hum. Mol. Genet. 2(6):673-676(1993)