

**NIPAL1 Antibody (C-term)**  
**Affinity Purified Rabbit Polyclonal Antibody (Pab)**  
**Catalog # AP11352b**

**Specification**

---

**NIPAL1 Antibody (C-term) - Product Information**

Application	WB, FC,E
Primary Accession	<a href="#">Q6NVV3</a>
Other Accession	<a href="#">NP_997213.1</a>
Reactivity	Human, Mouse
Host	Rabbit
Clonality	Polyclonal
Isotype	Rabbit IgG
Calculated MW	44638
Antigen Region	381-410

**NIPAL1 Antibody (C-term) - Additional Information**

**Gene ID** 152519

**Other Names**

Magnesium transporter NIPA3, NIPA-like protein 1, Non-imprinted in Prader-Willi/Angelman syndrome region protein 3, NIPAL1, NIPA3, NPAL1

**Target/Specificity**

This NIPAL1 antibody is generated from rabbits immunized with a KLH conjugated synthetic peptide between 381-410 amino acids from the C-terminal region of human NIPAL1.

**Dilution**

WB~~1:1000  
FC~~1:10~50

**Format**

Purified polyclonal antibody supplied in PBS with 0.09% (W/V) sodium azide. This antibody is purified through a protein A column, followed by peptide affinity purification.

**Storage**

Maintain refrigerated at 2-8°C for up to 2 weeks. For long term storage store at -20°C in small aliquots to prevent freeze-thaw cycles.

**Precautions**

NIPAL1 Antibody (C-term) is for research use only and not for use in diagnostic or therapeutic procedures.

**NIPAL1 Antibody (C-term) - Protein Information**

**Name** NIPAL1

**Synonyms** NIPA3, NPAL1

**Function** Acts as a Mg(2+) transporter. Can also transport other divalent cations such as Fe(2+), Sr(2+), Ba(2+), Mn(2+), Cu(2+) and Co(2+) but to a much less extent than Mg(2+) (By similarity).

**Cellular Location**

Golgi apparatus membrane {ECO:0000250|UniProtKB:Q8BMW7}; Multi-pass membrane protein

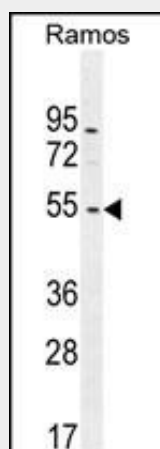
**Tissue Location**

Expressed in the pancreatic islets.

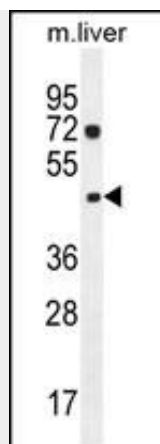
**NIPAL1 Antibody (C-term) - Protocols**

Provided below are standard protocols that you may find useful for product applications.

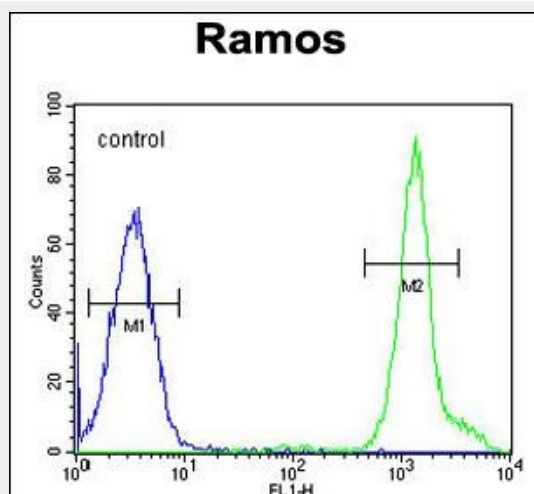
- [Western Blot](#)
- [Blocking Peptides](#)
- [Dot Blot](#)
- [Immunohistochemistry](#)
- [Immunofluorescence](#)
- [Immunoprecipitation](#)
- [Flow Cytometry](#)
- [Cell Culture](#)

**NIPAL1 Antibody (C-term) - Images**

NIPAL1 Antibody (C-term) (Cat. #AP11352b) western blot analysis in Ramos cell line lysates (35ug/lane). This demonstrates the NIPAL1 antibody detected the NIPAL1 protein (arrow).



NIPAL1 Antibody (C-term) (Cat. #AP11352b) western blot analysis in mouse liver tissue lysates (35ug/lane). This demonstrates the NIPAL1 antibody detected the NIPAL1 protein (arrow).



NIPAL1 Antibody (C-term) (Cat. #AP11352b) flow cytometric analysis of Ramos cells (right histogram) compared to a negative control cell (left histogram). FITC-conjugated goat-anti-rabbit secondary antibodies were used for the analysis.

#### **NIPAL1 Antibody (C-term) - Background**

Acts as a Mg(2+) transporter. Can also transport other divalent cations such as Fe(2+), Sr(2+), Ba(2+), Mn(2+), Cu(2+) and Co(2+) but to a much less extent than Mg(2+) (By similarity).

#### **NIPAL1 Antibody (C-term) - References**

Gerhard, D.S., et al. Genome Res. 14 (10B), 2121-2127 (2004) :