

**LRRC45 Antibody (C-term)**  
**Affinity Purified Rabbit Polyclonal Antibody (Pab)**  
**Catalog # AP11368b****Specification**

---

**LRRC45 Antibody (C-term) - Product Information**

Application	IF, WB, IHC-P, FC,E
Primary Accession	<a href="#">O96CN5</a>
Other Accession	<a href="#">NP_659436.1</a>
Reactivity	Human
Host	Rabbit
Clonality	Polyclonal
Isotype	Rabbit IgG
Calculated MW	75951
Antigen Region	615-643

**LRRC45 Antibody (C-term) - Additional Information****Gene ID** 201255**Other Names**

Leucine-rich repeat-containing protein 45, LRRC45

**Target/Specificity**

This LRRC45 antibody is generated from rabbits immunized with a KLH conjugated synthetic peptide between 615-643 amino acids from the C-terminal region of human LRRC45.

**Dilution**

IF~~1:25  
WB~~1:1000  
IHC-P~~1:50~100  
FC~~1:10~50

**Format**

Purified polyclonal antibody supplied in PBS with 0.09% (W/V) sodium azide. This antibody is purified through a protein A column, followed by peptide affinity purification.

**Storage**

Maintain refrigerated at 2-8°C for up to 2 weeks. For long term storage store at -20°C in small aliquots to prevent freeze-thaw cycles.

**Precautions**

LRRC45 Antibody (C-term) is for research use only and not for use in diagnostic or therapeutic procedures.

**LRRC45 Antibody (C-term) - Protein Information****Name** LRRC45

**Function** Component of the proteinaceous fiber-like linker between two centrioles, required for centrosome cohesion.

**Cellular Location**

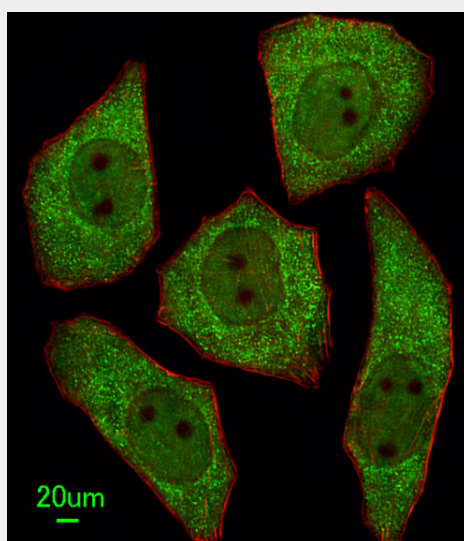
Cytoplasm, cytoskeleton, microtubule organizing center, centrosome. Note=Localizes to the proteinaceous linker between the proximal ends of the centrioles

**LRRC45 Antibody (C-term) - Protocols**

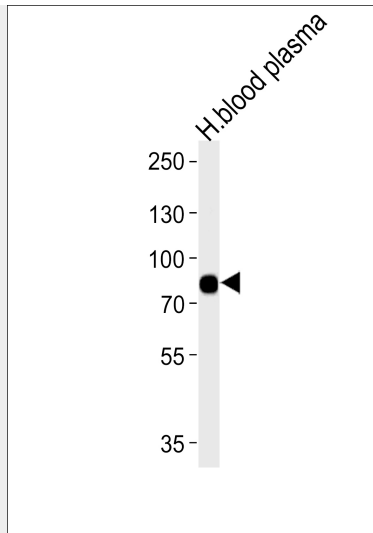
Provided below are standard protocols that you may find useful for product applications.

- [Western Blot](#)
- [Blocking Peptides](#)
- [Dot Blot](#)
- [Immunohistochemistry](#)
- [Immunofluorescence](#)
- [Immunoprecipitation](#)
- [Flow Cytometry](#)
- [Cell Culture](#)

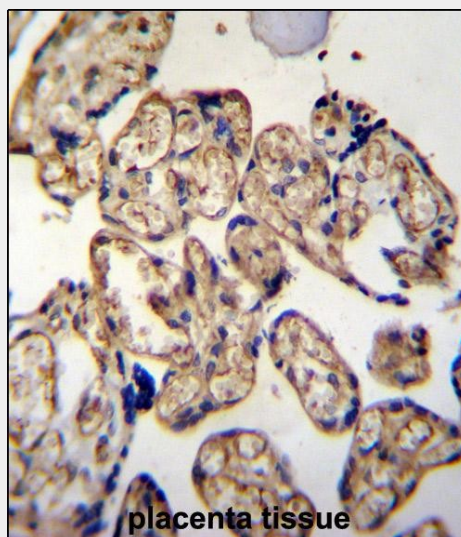
**LRRC45 Antibody (C-term) - Images**



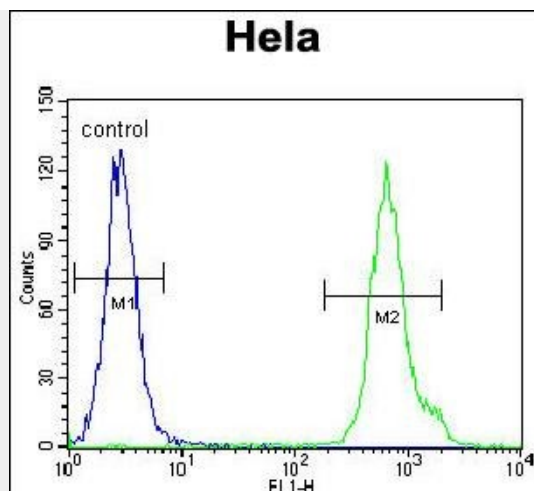
Immunofluorescent analysis of U251 cells, using LRRC45 Antibody (C-term) (Cat. #AP11368b). AP11368b was diluted at 1:25 dilution. Alexa Fluor 488-conjugated goat anti-rabbit IgG at 1:400 dilution was used as the secondary antibody (green). Cytoplasmic actin was counterstained with Dylight Fluor® 554 (red) conjugated Phalloidin (red).



Western blot analysis of lysates from human blood plasma tissue (from left to right), using LRRC45 Antibody (C-term) (Cat. #AP11368b). AP11368b was diluted at 1:1000 at each lane. A goat anti-rabbit IgG H&L (HRP) at 1:5000 dilution was used as the secondary antibody. Lysates at 35ug per lane.



LRRC45 Antibody (C-term) (Cat. #AP11368b) immunohistochemistry analysis in formalin fixed and paraffin embedded human placenta tissue followed by peroxidase conjugation of the secondary antibody and DAB staining. This data demonstrates the use of LRRC45 Antibody (C-term) for immunohistochemistry. Clinical relevance has not been evaluated.



LRRC45 Antibody (C-term) (Cat. #AP11368b) flow cytometric analysis of Hela cells (right histogram) compared to a negative control cell (left histogram). FITC-conjugated goat-anti-rabbit secondary antibodies were used for the analysis.

#### **LRRC45 Antibody (C-term) - References**

Olsen, J.V., et al. Cell 127(3):635-648(2006) Gerhard, D.S., et al. Genome Res. 14 (10B), 2121-2127 (2004) :