

PTCHD1 Antibody (Center)
Affinity Purified Rabbit Polyclonal Antibody (Pab)
Catalog # AP11396c

Specification

PTCHD1 Antibody (Center) - Product Information

Application	WB, IHC-P,E
Primary Accession	O96NR3
Other Accession	Q14B62 , NP_775766.2
Reactivity	Mouse
Host	Rabbit
Clonality	Polyclonal
Isotype	Rabbit IgG
Calculated MW	101341
Antigen Region	611-639

PTCHD1 Antibody (Center) - Additional Information

Gene ID 139411

Other Names

Patched domain-containing protein 1, PTCHD1

Target/Specificity

This PTCHD1 antibody is generated from rabbits immunized with a KLH conjugated synthetic peptide between 611-639 amino acids from the Central region of human PTCHD1.

Dilution

WB~~1:1000

IHC-P~~1:10~50

Format

Purified polyclonal antibody supplied in PBS with 0.09% (W/V) sodium azide. This antibody is purified through a protein A column, followed by peptide affinity purification.

Storage

Maintain refrigerated at 2-8°C for up to 2 weeks. For long term storage store at -20°C in small aliquots to prevent freeze-thaw cycles.

Precautions

PTCHD1 Antibody (Center) is for research use only and not for use in diagnostic or therapeutic procedures.

PTCHD1 Antibody (Center) - Protein Information

Name PTCHD1 ([HGNC:26392](#))

Function Required for the development and function of the thalamic reticular nucleus (TRN), a

part of the thalamus that is critical for thalamocortical transmission, generation of sleep rhythms, sensorimotor processing and attention.

Cellular Location

Cell membrane; Multi-pass membrane protein

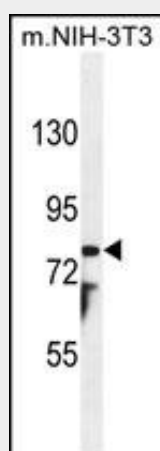
Tissue Location

Widely expressed, including in various regions of the brain with highest expression in the gray and white cerebellum, followed by the cerebellar vermis and the pituitary gland

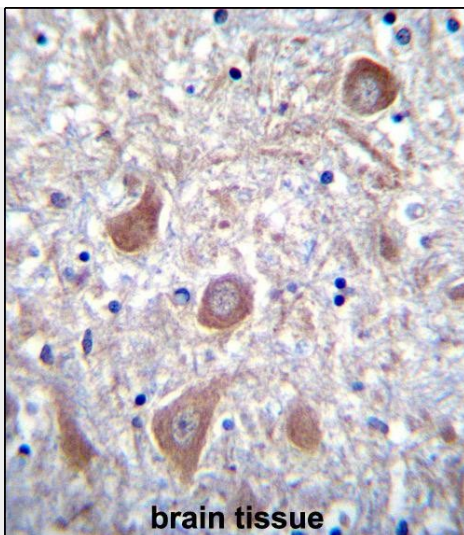
PTCHD1 Antibody (Center) - Protocols

Provided below are standard protocols that you may find useful for product applications.

- [Western Blot](#)
- [Blocking Peptides](#)
- [Dot Blot](#)
- [Immunohistochemistry](#)
- [Immunofluorescence](#)
- [Immunoprecipitation](#)
- [Flow Cytometry](#)
- [Cell Culture](#)

PTCHD1 Antibody (Center) - Images

PTCHD1 Antibody (Center) (Cat. #AP11396c) western blot analysis in mouse NIH-3T3 cell line lysates (35ug/lane). This demonstrates the PTCHD1 antibody detected the PTCHD1 protein (arrow).



PTCHD1 Antibody (Center) (Cat. #AP11396c) immunohistochemistry analysis in formalin fixed and paraffin embedded human brain tissue followed by peroxidase conjugation of the secondary antibody and DAB staining. This data demonstrates the use of PTCHD1 Antibody (Center) for immunohistochemistry. Clinical relevance has not been evaluated.

PTCHD1 Antibody (Center) - References

Pinto, D., et al. Nature (2010) In press :