

C6orf138 Antibody (Center)
Affinity Purified Rabbit Polyclonal Antibody (Pab)
Catalog # AP11405c**Specification**

C6orf138 Antibody (Center) - Product Information

Application	WB, IHC-P,E
Primary Accession	Q6ZW05
Other Accession	B9EKX1 , NP_997382.2 , NP_001013754.3
Reactivity	Human
Predicted	Mouse
Host	Rabbit
Clonality	Polyclonal
Isotype	Rabbit IgG
Calculated MW	96371
Antigen Region	563-591

C6orf138 Antibody (Center) - Additional Information**Gene ID** 442213**Other Names**

Patched domain-containing protein 4, PTCHD4, C6orf138

Target/Specificity

This C6orf138 antibody is generated from rabbits immunized with a KLH conjugated synthetic peptide between 563-591 amino acids from the Central region of human C6orf138.

Dilution

WB~~1:1000

IHC-P~~1:10~50

Format

Purified polyclonal antibody supplied in PBS with 0.09% (W/V) sodium azide. This antibody is purified through a protein A column, followed by peptide affinity purification.

Storage

Maintain refrigerated at 2-8°C for up to 2 weeks. For long term storage store at -20°C in small aliquots to prevent freeze-thaw cycles.

Precautions

C6orf138 Antibody (Center) is for research use only and not for use in diagnostic or therapeutic procedures.

C6orf138 Antibody (Center) - Protein Information**Name** PTCHD4

Synonyms C6orf138, PTCH53

Function Could act as a repressor of canonical hedgehog signaling by antagonizing the effects of SMO, as suggested by down-regulation of hedgehog target genes, including GLI1, PTCH1, and PTCH2 in PTCHD4- expressing cells.

Cellular Location

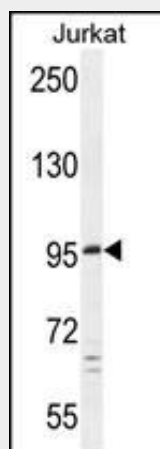
Membrane; Multi-pass membrane protein

C6orf138 Antibody (Center) - Protocols

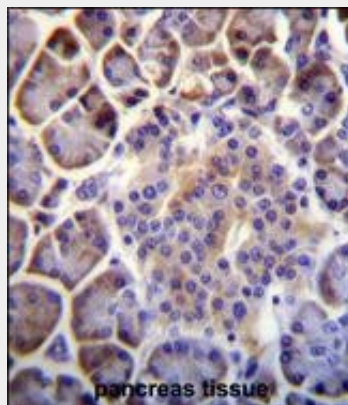
Provided below are standard protocols that you may find useful for product applications.

- [Western Blot](#)
- [Blocking Peptides](#)
- [Dot Blot](#)
- [Immunohistochemistry](#)
- [Immunofluorescence](#)
- [Immunoprecipitation](#)
- [Flow Cytometry](#)
- [Cell Culture](#)

C6orf138 Antibody (Center) - Images



C6orf138 Antibody (Center) (Cat. #AP11405c) western blot analysis in Jurkat cell line lysates (35ug/lane). This demonstrates the C6orf138 antibody detected the C6orf138 protein (arrow).



C6orf138 Antibody (Center) (Cat. #AP11405c) immunohistochemistry analysis in formalin fixed and paraffin embedded human pancreas tissue followed by peroxidase conjugation of the secondary antibody and DAB staining. This data demonstrates the use of C6orf138 Antibody (Center) for immunohistochemistry. Clinical relevance has not been evaluated.