

**SLC16A13 Antibody (C-term)**  
**Affinity Purified Rabbit Polyclonal Antibody (Pab)**  
**Catalog # AP11410b**

**Specification**

---

**SLC16A13 Antibody (C-term) - Product Information**

Application	WB, IHC-P,E
Primary Accession	<a href="#">Q7RTY0</a>
Other Accession	<a href="#">NP_963860.1</a>
Reactivity	Human, Mouse
Host	Rabbit
Clonality	Polyclonal
Isotype	Rabbit IgG
Antigen Region	398-426

**SLC16A13 Antibody (C-term) - Additional Information**

**Gene ID** 201232

**Other Names**

Monocarboxylate transporter 13, MCT 13, Solute carrier family 16 member 13, SLC16A13, MCT13

**Target/Specificity**

This SLC16A13 antibody is generated from rabbits immunized with a KLH conjugated synthetic peptide between 398-426 amino acids from the C-terminal region of human SLC16A13.

**Dilution**

WB~~1:1000

IHC-P~~1:10~50

**Format**

Purified polyclonal antibody supplied in PBS with 0.09% (W/V) sodium azide. This antibody is purified through a protein A column, followed by peptide affinity purification.

**Storage**

Maintain refrigerated at 2-8°C for up to 2 weeks. For long term storage store at -20°C in small aliquots to prevent freeze-thaw cycles.

**Precautions**

SLC16A13 Antibody (C-term) is for research use only and not for use in diagnostic or therapeutic procedures.

**SLC16A13 Antibody (C-term) - Protein Information**

**Name** SLC16A13

**Synonyms** MCT13

**Function** Proton-linked monocarboxylate transporter. May catalyze the transport of monocarboxylates across the plasma membrane.

**Cellular Location**

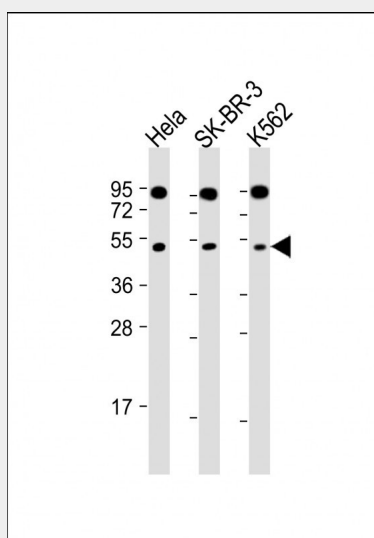
Golgi apparatus membrane; Multi-pass membrane protein. Cell membrane; Multi-pass membrane protein

**SLC16A13 Antibody (C-term) - Protocols**

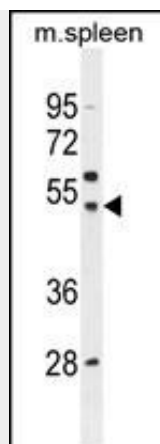
Provided below are standard protocols that you may find useful for product applications.

- [Western Blot](#)
- [Blocking Peptides](#)
- [Dot Blot](#)
- [Immunohistochemistry](#)
- [Immunofluorescence](#)
- [Immunoprecipitation](#)
- [Flow Cytometry](#)
- [Cell Culture](#)

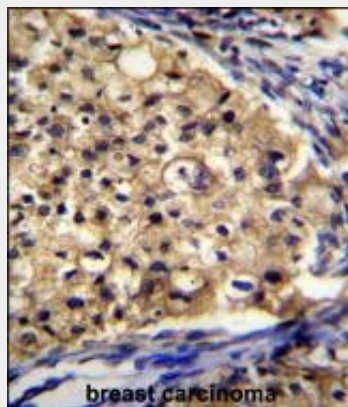
**SLC16A13 Antibody (C-term) - Images**



All lanes : Anti-SLC16A13 Antibody (C-term) at 1:2000 dilution Lane 1: HeLa whole cell lysate Lane 2: SK-BR-3 whole cell lysate Lane 3: K562 whole cell lysate Lysates/proteins at 20 µg per lane. Secondary Goat Anti-Rabbit IgG, (H+L), Peroxidase conjugated at 1/10000 dilution. Predicted band size : 45 kDa Blocking/Dilution buffer: 5% NFD/MTBST.



SLC16A13 Antibody (C-term) (Cat. #AP11410b) western blot analysis in mouse spleen tissue lysates (35ug/lane). This demonstrates the SLC16A13 antibody detected the SLC16A13 protein (arrow).



SLC16A13 Antibody (C-term) (Cat. #AP11410b) immunohistochemistry analysis in formalin fixed and paraffin embedded human breast carcinoma followed by peroxidase conjugation of the secondary antibody and DAB staining. This data demonstrates the use of SLC16A13 Antibody (C-term) for immunohistochemistry. Clinical relevance has not been evaluated.

#### **SLC16A13 Antibody (C-term) - Background**

Proton-linked monocarboxylate transporter. Catalyzes the rapid transport across the plasma membrane of many monocarboxylates (By similarity).

#### **SLC16A13 Antibody (C-term) - References**

Halestrap, A.P., et al. Pflugers Arch. 447(5):619-628(2004)

#### **SLC16A13 Antibody (C-term) - Citations**

- [The monocarboxylate transporters exist in the cattle endocrine pancreas.](#)