

OR10H4 Antibody (C-term)
Affinity Purified Rabbit Polyclonal Antibody (Pab)
Catalog # AP11430B**Specification**

OR10H4 Antibody (C-term) - Product Information

Application	WB,E
Primary Accession	Q8NGA5
Other Accession	NP_001004465.1
Reactivity	Human
Host	Rabbit
Clonality	Polyclonal
Isotype	Rabbit IgG
Calculated MW	35765
Antigen Region	282-311

OR10H4 Antibody (C-term) - Additional Information**Gene ID** 126541**Other Names**

Olfactory receptor 10H4, Olfactory receptor OR19-28, OR10H4

Target/Specificity

This OR10H4 antibody is generated from rabbits immunized with a KLH conjugated synthetic peptide between 282-311 amino acids from the C-terminal region of human OR10H4.

Dilution

WB~~1:1000

Format

Purified polyclonal antibody supplied in PBS with 0.09% (W/V) sodium azide. This antibody is purified through a protein A column, followed by peptide affinity purification.

Storage

Maintain refrigerated at 2-8°C for up to 2 weeks. For long term storage store at -20°C in small aliquots to prevent freeze-thaw cycles.

Precautions

OR10H4 Antibody (C-term) is for research use only and not for use in diagnostic or therapeutic procedures.

OR10H4 Antibody (C-term) - Protein Information**Name** OR10H4**Function** Odorant receptor.

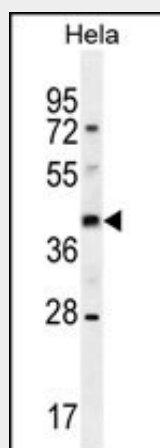
Cellular Location

Cell membrane; Multi-pass membrane protein.

OR10H4 Antibody (C-term) - Protocols

Provided below are standard protocols that you may find useful for product applications.

- [Western Blot](#)
- [Blocking Peptides](#)
- [Dot Blot](#)
- [Immunohistochemistry](#)
- [Immunofluorescence](#)
- [Immunoprecipitation](#)
- [Flow Cytometry](#)
- [Cell Culture](#)

OR10H4 Antibody (C-term) - Images

OR10H4 Antibody (C-term) (Cat. #AP11430b) western blot analysis in HeLa cell line lysates (35ug/lane). This demonstrates the OR10H4 antibody detected the OR10H4 protein (arrow).

OR10H4 Antibody (C-term) - Background

Olfactory receptors interact with odorant molecules in the nose, to initiate a neuronal response that triggers the perception of a smell. The olfactory receptor proteins are members of a large family of G-protein-coupled receptors (GPCR) arising from single coding-exon genes. Olfactory receptors share a 7-transmembrane domain structure with many neurotransmitter and hormone receptors and are responsible for the recognition and G protein-mediated transduction of odorant signals. The olfactory receptor gene family is the largest in the genome. The nomenclature assigned to the olfactory receptor genes and proteins for this organism is independent of other organisms.

OR10H4 Antibody (C-term) - References

Malnic, B., et al. Proc. Natl. Acad. Sci. U.S.A. 101(8):2584-2589(2004)
Fuchs, T., et al. Genomics 80(3):295-302(2002)