

CRFR1 Antibody (Q103)
Affinity Purified Rabbit Polyclonal Antibody (Pab)
Catalog # AP11441a**Specification**

CRFR1 Antibody (Q103) - Product Information

Application	WB, FC,E
Primary Accession	P34998
Other Accession	P35353 , NP_001138618.1 , NP_004373.2
Reactivity	Human
Predicted	Rat
Host	Rabbit
Clonality	Polyclonal
Isotype	Rabbit IgG
Calculated MW	50719
Antigen Region	88-119

CRFR1 Antibody (Q103) - Additional Information**Gene ID** 104909134;1394**Other Names**

Corticotropin-releasing factor receptor 1, CRF-R-1, CRF-R1, CRFR-1, Corticotropin-releasing hormone receptor 1, CRH-R-1, CRH-R1, CRHR1, CRFR, CRFR1, CRHR

Target/Specificity

This CRFR1 antibody is generated from rabbits immunized with a KLH conjugated synthetic peptide between 88-119 amino acids from human CRFR1.

Dilution

WB~~1:1000

FC~~1:10~50

Format

Purified polyclonal antibody supplied in PBS with 0.09% (W/V) sodium azide. This antibody is purified through a protein A column, followed by peptide affinity purification.

Storage

Maintain refrigerated at 2-8°C for up to 2 weeks. For long term storage store at -20°C in small aliquots to prevent freeze-thaw cycles.

Precautions

CRFR1 Antibody (Q103) is for research use only and not for use in diagnostic or therapeutic procedures.

CRFR1 Antibody (Q103) - Protein Information**Name** CRHR1

Synonyms CRFR, CRFR1, CRHR

Function G-protein coupled receptor for CRH (corticotropin-releasing factor) and UCN (urocortin). Has high affinity for CRH and UCN. Ligand binding causes a conformation change that triggers signaling via guanine nucleotide-binding proteins (G proteins) and down-stream effectors, such as adenylate cyclase. Promotes the activation of adenylate cyclase, leading to increased intracellular cAMP levels. Inhibits the activity of the calcium channel CACNA1H. Required for normal embryonic development of the adrenal gland and for normal hormonal responses to stress. Plays a role in the response to anxiogenic stimuli.

Cellular Location

Cell membrane; Multi-pass membrane protein. Endosome. Note=Agonist-binding promotes endocytosis

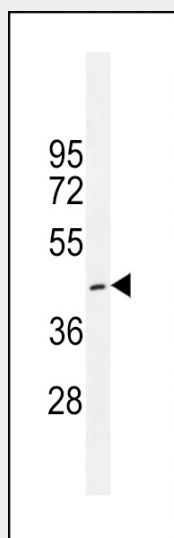
Tissue Location

Predominantly expressed in the cerebellum, pituitary, cerebral cortex and olfactory lobe

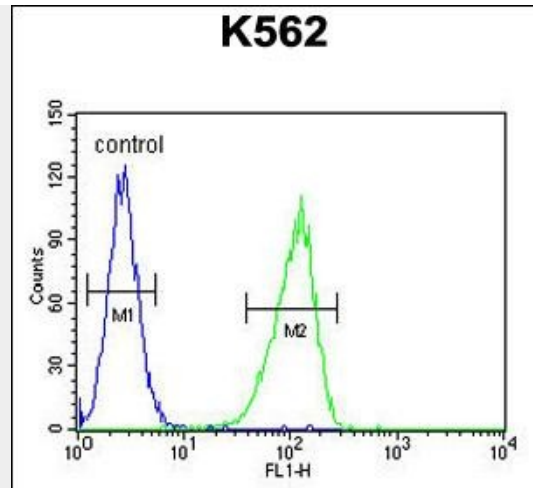
CRFR1 Antibody (Q103) - Protocols

Provided below are standard protocols that you may find useful for product applications.

- [Western Blot](#)
- [Blocking Peptides](#)
- [Dot Blot](#)
- [Immunohistochemistry](#)
- [Immunofluorescence](#)
- [Immunoprecipitation](#)
- [Flow Cytometry](#)
- [Cell Culture](#)

CRFR1 Antibody (Q103) - Images

CRFR1 Antibody (Q103) (Cat. #AP11441a) western blot analysis in K562 cell line lysates (35ug/lane). This demonstrates the CRFR1 antibody detected the CRFR1 protein (arrow).



CRFR1 Antibody (Q103) (Cat. #AP11441a) flow cytometric analysis of K562 cells (right histogram) compared to a negative control cell (left histogram). FITC-conjugated goat-anti-rabbit secondary antibodies were used for the analysis.

CRFR1 Antibody (Q103) - Background

This gene encodes a G-protein coupled receptor that binds neuropeptides of the corticotropin releasing hormone family that are major regulators of the hypothalamic-pituitary-adrenal pathway. The encoded protein is essential for the activation of signal transduction pathways that regulate diverse physiological processes including stress, reproduction, immune response and obesity. Alternative splicing results in multiple transcript variants.

CRFR1 Antibody (Q103) - References

Karteris, E., et al. *Endocrinology* 151(10):4959-4968(2010)
Romero, R., et al. *Am. J. Obstet. Gynecol.* 203 (4), 361 (2010) :
Bailey, S.D., et al. *Diabetes Care* 33(10):2250-2253(2010)
Ruano, G., et al. *Pharmacogenomics* 11(7):959-971(2010)
Hillhouse, E.W., et al. *Endocr. Rev.* 27(3):260-286(2006)