

**NUMB Antibody (N-term)**  
**Purified Rabbit Polyclonal Antibody (Pab)**  
**Catalog # AP11449a****Specification**

---

**NUMB Antibody (N-term) - Product Information**

Application	WB, IHC-P,E
Primary Accession	<a href="#">P49757</a>
Other Accession	<a href="#">Q2LC84</a> , <a href="#">Q9QZS3</a> , <a href="#">NP_003735.3</a> , <a href="#">NP_001005743.1</a> , <a href="#">NP_001005745.1</a>
Reactivity	Human
Predicted	Mouse, Rat
Host	Rabbit
Clonality	Polyclonal
Isotype	Rabbit IgG
Calculated MW	70804
Antigen Region	1-30

**NUMB Antibody (N-term) - Additional Information****Gene ID** 8650**Other Names**

Protein numb homolog, h-Numb, Protein S171, NUMB

**Target/Specificity**

This NUMB antibody is generated from rabbits immunized with a KLH conjugated synthetic peptide between 1-30 amino acids from the N-terminal region of human NUMB.

**Dilution**WB~~1:1000  
IHC-P~~1:50~100**Format**

Purified polyclonal antibody supplied in PBS with 0.09% (W/V) sodium azide. This antibody is prepared by Saturated Ammonium Sulfate (SAS) precipitation followed by dialysis against PBS.

**Storage**

Maintain refrigerated at 2-8°C for up to 2 weeks. For long term storage store at -20°C in small aliquots to prevent freeze-thaw cycles.

**Precautions**

NUMB Antibody (N-term) is for research use only and not for use in diagnostic or therapeutic procedures.

**NUMB Antibody (N-term) - Protein Information****Name** NUMB ([HGNC:8060](#))

**Function** Regulates clathrin-mediated receptor endocytosis (PubMed:[18657069](#)). Plays a role in the process of neurogenesis (By similarity). Required throughout embryonic neurogenesis to maintain neural progenitor cells, also called radial glial cells (RGCs), by allowing their daughter cells to choose progenitor over neuronal cell fate (By similarity). Not required for the proliferation of neural progenitor cells before the onset of neurogenesis. Also involved postnatally in the subventricular zone (SVZ) neurogenesis by regulating SVZ neuroblasts survival and ependymal wall integrity (By similarity). May also mediate local repair of brain ventricular wall damage (By similarity).

#### Cellular Location

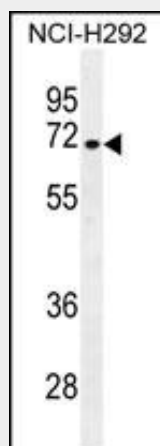
Cell membrane; Peripheral membrane protein; Cytoplasmic side. Endosome membrane; Peripheral membrane protein; Cytoplasmic side. Note=Localizes to perinuclear endosomes in an AAK1-dependent manner.

#### NUMB Antibody (N-term) - Protocols

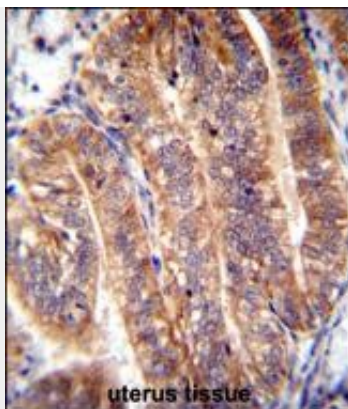
Provided below are standard protocols that you may find useful for product applications.

- [Western Blot](#)
- [Blocking Peptides](#)
- [Dot Blot](#)
- [Immunohistochemistry](#)
- [Immunofluorescence](#)
- [Immunoprecipitation](#)
- [Flow Cytometry](#)
- [Cell Culture](#)

#### NUMB Antibody (N-term) - Images



NUMB Antibody (N-term) (Cat. #AP11449a) western blot analysis in NCI-H292 cell line lysates (35ug/lane). This demonstrates the NUMB antibody detected the NUMB protein (arrow).



NUMB Antibody (N-term) (Cat. #AP11449a) immunohistochemistry analysis in formalin fixed and paraffin embedded human uterus tissue followed by peroxidase conjugation of the secondary antibody and DAB staining. This data demonstrates the use of NUMB Antibody (N-term) for immunohistochemistry. Clinical relevance has not been evaluated.

#### **NUMB Antibody (N-term) - Background**

The protein encoded by this gene plays a role in the determination of cell fates during development. The encoded protein, whose degradation is induced in a proteasome-dependent manner by MDM2, is a membrane-bound protein that has been shown to associate with EPS15, LNX1, and NOTCH1. Four transcript variants encoding different isoforms have been found for this gene.

#### **NUMB Antibody (N-term) - References**

Rennstam, K., et al. Breast Cancer Res. Treat. 122(2):315-324(2010)  
Lu, C.B., et al. Neuroscience 161(2):403-412(2009)  
Chen, H., et al. Pathobiology 76(3):149-154(2009)  
Schluter, T., et al. Biochem. Biophys. Res. Commun. 379(4):909-913(2009)  
Kyriazis, G.A., et al. J. Biol. Chem. 283(37):25492-25502(2008)