

**CPM Antibody (Center)**  
**Affinity Purified Rabbit Polyclonal Antibody (Pab)**  
**Catalog # AP11458c**

**Specification**

---

**CPM Antibody (Center) - Product Information**

Application	WB, IHC-P,E
Primary Accession	<a href="#">P14384</a>
Other Accession	<a href="#">NP_938079.1</a> , <a href="#">NP_001865.1</a> , <a href="#">NP_001005502.1</a>
Reactivity	Human
Host	Rabbit
Clonality	Polyclonal
Isotype	Rabbit IgG
Antigen Region	212-241

**CPM Antibody (Center) - Additional Information**

**Gene ID** 1368

**Other Names**

Carboxypeptidase M, CPM, CPM

**Target/Specificity**

This CPM antibody is generated from rabbits immunized with a KLH conjugated synthetic peptide between 212-241 amino acids from the Central region of human CPM.

**Dilution**

WB~~1:1000  
IHC-P~~1:100

**Format**

Purified polyclonal antibody supplied in PBS with 0.09% (W/V) sodium azide. This antibody is purified through a protein A column, followed by peptide affinity purification.

**Storage**

Maintain refrigerated at 2-8°C for up to 2 weeks. For long term storage store at -20°C in small aliquots to prevent freeze-thaw cycles.

**Precautions**

CPM Antibody (Center) is for research use only and not for use in diagnostic or therapeutic procedures.

**CPM Antibody (Center) - Protein Information**

**Name** CPM

**Function** Specifically removes C-terminal basic residues (Arg or Lys) from peptides and proteins. It is believed to play important roles in the control of peptide hormone and growth factor activity

at the cell surface, and in the membrane-localized degradation of extracellular proteins.

#### Cellular Location

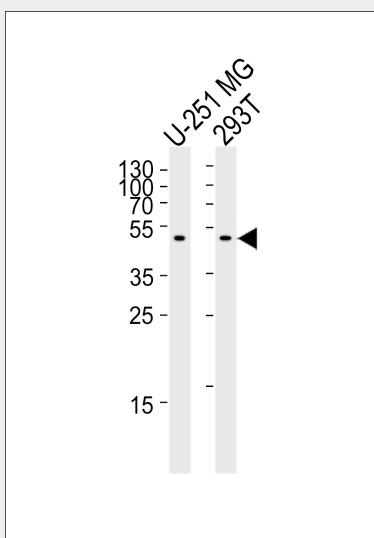
Cell membrane; Lipid-anchor, GPI-anchor

#### CPM Antibody (Center) - Protocols

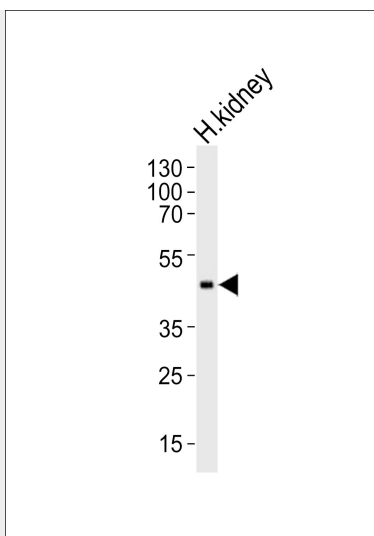
Provided below are standard protocols that you may find useful for product applications.

- [Western Blot](#)
- [Blocking Peptides](#)
- [Dot Blot](#)
- [Immunohistochemistry](#)
- [Immunofluorescence](#)
- [Immunoprecipitation](#)
- [Flow Cytometry](#)
- [Cell Culture](#)

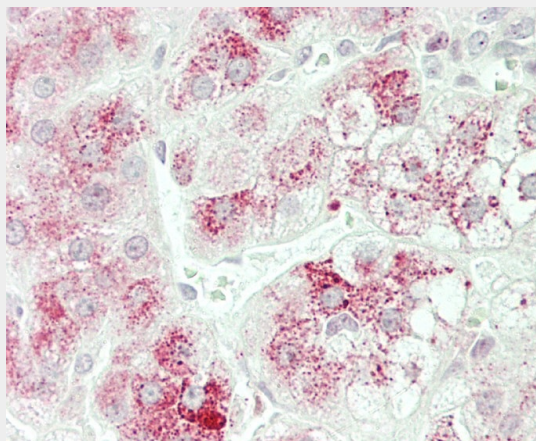
#### CPM Antibody (Center) - Images



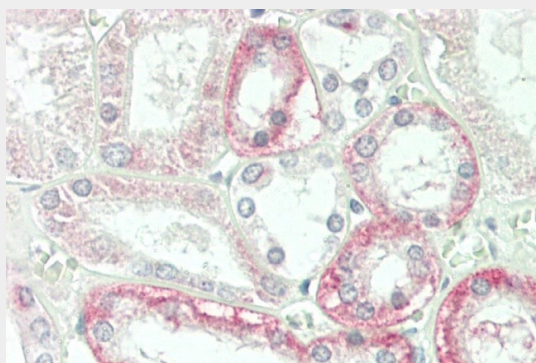
Western blot analysis of lysates from U-251 MG, 293T cell line (from left to right), using CPM Antibody (Center)(Cat. #AP11458c). AP11458c was diluted at 1:1000 at each lane. A goat anti-rabbit IgG H&L(HRP) at 1:5000 dilution was used as the secondary antibody. Lysates at 35ug per lane.



Western blot analysis of lysate from human kidney tissue lysate, using CPM Antibody (Center)(Cat. #AP11458c). AP11458c was diluted at 1:1000. A goat anti-rabbit IgG H&L(HRP) at 1:5000 dilution was used as the secondary antibody. Lysate at 35ug.



Formalin-fixed and paraffin-embedded H.adrenal tissue reacted with CPM Antibody (Center) (Cat#AP11458c).



Formalin-fixed and paraffin-embedded H.kidney tissue reacted with CPM Antibody (Center) (Cat#AP11458c).

### CPM Antibody (Center) - Background

The protein encoded by this gene is a membrane-bound arginine/lysine carboxypeptidase. Its expression is associated with monocyte to macrophage differentiation. This encoded protein

contains hydrophobic regions at the amino and carboxy termini and has 6 potential asparagine-linked glycosylation sites. The active site residues of carboxypeptidases A and B are conserved in this protein. Three alternatively spliced transcript variants encoding the same protein have been described for this gene. [provided by RefSeq].

#### **CPM Antibody (Center) - References**

Rietschel, M., et al. Biol. Psychiatry 68(6):578-585(2010) Erickson-Johnson, M.R., et al. Mod. Pathol. 22(12):1541-1547(2009) Marquez-Curtis, L., et al. Stem Cells 26(5):1211-1220(2008) Zhang, X., et al. J. Biol. Chem. 283(12):7994-8004(2008) Elortza, F., et al. J. Proteome Res. 5(4):935-943(2006)