

**SPB4 Antibody (C-term)**  
**Affinity Purified Rabbit Polyclonal Antibody (Pab)**  
**Catalog # AP11571b****Specification**

---

**SPB4 Antibody (C-term) - Product Information**

Application	WB, FC,E
Primary Accession	<a href="#">P48594</a>
Other Accession	<a href="#">NP_002965.1</a>
Reactivity	Human
Host	Rabbit
Clonality	Polyclonal
Isotype	Rabbit IgG
Calculated MW	44854
Antigen Region	268-296

**SPB4 Antibody (C-term) - Additional Information****Gene ID** 6318**Other Names**

Serp1n B4, Leupin, Peptidase inhibitor 11, PI-11, Squamous cell carcinoma antigen 2, SCCA-2, SERPINB4, PI11, SCCA2

**Target/Specificity**

This SPB4 antibody is generated from rabbits immunized with a KLH conjugated synthetic peptide between 268-296 amino acids from the C-terminal region of human SPB4.

**Dilution**

WB~~1:1000

FC~~1:10~50

**Format**

Purified polyclonal antibody supplied in PBS with 0.09% (W/V) sodium azide. This antibody is purified through a protein A column, followed by peptide affinity purification.

**Storage**

Maintain refrigerated at 2-8°C for up to 2 weeks. For long term storage store at -20°C in small aliquots to prevent freeze-thaw cycles.

**Precautions**

SPB4 Antibody (C-term) is for research use only and not for use in diagnostic or therapeutic procedures.

**SPB4 Antibody (C-term) - Protein Information****Name** SERPINB4

**Synonyms** PI11, SCCA2

**Function** May act as a protease inhibitor to modulate the host immune response against tumor cells.

**Cellular Location**

Cytoplasm. Note=Seems to also be secreted in plasma by cancerous cells but at a low level

**Tissue Location**

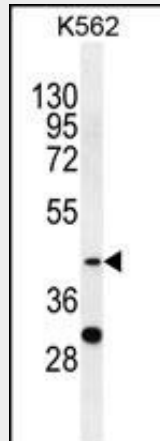
Squamous cells.

**SPB4 Antibody (C-term) - Protocols**

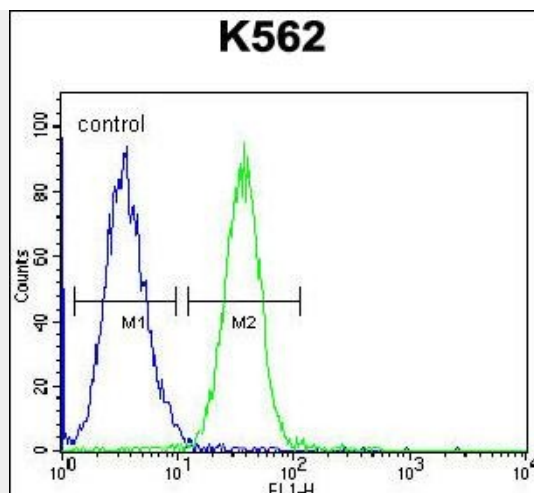
Provided below are standard protocols that you may find useful for product applications.

- [Western Blot](#)
- [Blocking Peptides](#)
- [Dot Blot](#)
- [Immunohistochemistry](#)
- [Immunofluorescence](#)
- [Immunoprecipitation](#)
- [Flow Cytometry](#)
- [Cell Culture](#)

**SPB4 Antibody (C-term) - Images**



SPB4 Antibody (C-term) (Cat. #AP11571b) western blot analysis in K562 cell line lysates (35ug/lane). This demonstrates the SPB4 antibody detected the SPB4 protein (arrow).



SPB4 Antibody (C-term) (Cat. #AP11571b) flow cytometric analysis of K562 cells (right histogram) compared to a negative control cell (left histogram). FITC-conjugated goat-anti-rabbit secondary antibodies were used for the analysis.

#### **SPB4 Antibody (C-term) - Background**

SPB4 may act as a protease inhibitor to modulate the host immune response against tumor cells.

#### **SPB4 Antibody (C-term) - References**

- Murakami, A., et al. Int. J. Oncol. 36(6):1395-1400(2010)
- Higgins, W.J., et al. J. Biol. Chem. 285(6):3722-3729(2010)
- Villano, G., et al. Int. J. Mol. Med. 25(1):137-143(2010)
- Ahmed, S.T., et al. Biochem. Biophys. Res. Commun. 378(4):821-825(2009)
- Yamane, Y., et al. Int. Arch. Allergy Immunol. 150(1):89-101(2009)