

TCF21 Antibody (C-term)
Affinity Purified Rabbit Polyclonal Antibody (Pab)
Catalog # AP11577b**Specification**

TCF21 Antibody (C-term) - Product Information

| | |
|-------------------|--|
| Application | WB, FC,E |
| Primary Accession | O43680 |
| Other Accession | O5E9S3 , NP_003197.2 , NP_938206.1 |
| Reactivity | Human |
| Predicted | Bovine |
| Host | Rabbit |
| Clonality | Polyclonal |
| Isotype | Rabbit IgG |
| Antigen Region | 144-173 |

TCF21 Antibody (C-term) - Additional Information**Gene ID** 6943**Other Names**

Transcription factor 21, TCF-21, Capsulin, Class A basic helix-loop-helix protein 23, bHLHa23, Epicardin, Podocyte-expressed 1, Pod-1, TCF21, BHLHA23, POD1

Target/Specificity

This TCF21 antibody is generated from rabbits immunized with a KLH conjugated synthetic peptide between 144-173 amino acids from the C-terminal region of human TCF21.

Dilution

WB~~1:1000
FC~~1:10~50

Format

Purified polyclonal antibody supplied in PBS with 0.09% (W/V) sodium azide. This antibody is purified through a protein A column, followed by peptide affinity purification.

Storage

Maintain refrigerated at 2-8°C for up to 2 weeks. For long term storage store at -20°C in small aliquots to prevent freeze-thaw cycles.

Precautions

TCF21 Antibody (C-term) is for research use only and not for use in diagnostic or therapeutic procedures.

TCF21 Antibody (C-term) - Protein Information**Name** TCF21

Synonyms BHLHA23, POD1

Function Involved in epithelial-mesenchymal interactions in kidney and lung morphogenesis that include epithelial differentiation and branching morphogenesis. May play a role in the specification or differentiation of one or more subsets of epicardial cell types.

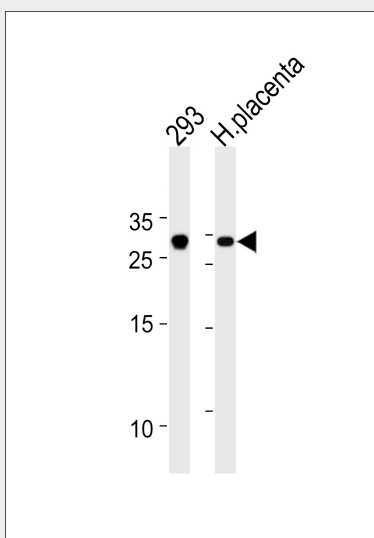
Cellular Location

Nucleus.

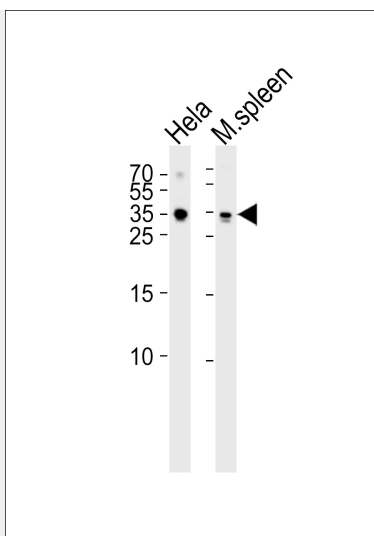
TCF21 Antibody (C-term) - Protocols

Provided below are standard protocols that you may find useful for product applications.

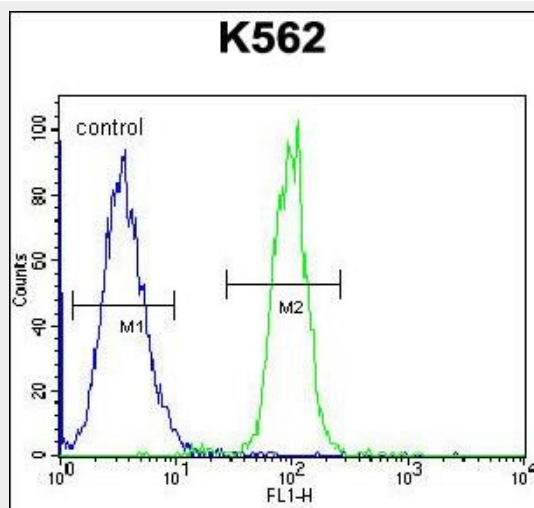
- [Western Blot](#)
- [Blocking Peptides](#)
- [Dot Blot](#)
- [Immunohistochemistry](#)
- [Immunofluorescence](#)
- [Immunoprecipitation](#)
- [Flow Cytometry](#)
- [Cell Culture](#)

TCF21 Antibody (C-term) - Images

TCF21 Antibody (C-term) (Cat. #AP11577b) western blot analysis in 293 cell line and human placenta tissue lysates (35ug/lane). This demonstrates the TCF21 antibody detected the TCF21 protein (arrow).



Western blot analysis of lysates from HeLa cell line mouse spleen tissue lysate (from left to right), using TCF21 Antibody (C-term) (Cat. #AP11577b). AP11577b was diluted at 1:1000 at each lane. A goat anti-rabbit IgG H&L (HRP) at 1:5000 dilution was used as the secondary antibody. Lysates at 35 µg per lane.



TCF21 Antibody (C-term) (Cat. #AP11577b) flow cytometric analysis of K562 cells (right histogram) compared to a negative control cell (left histogram). FITC-conjugated goat-anti-rabbit secondary antibodies were used for the analysis.

TCF21 Antibody (C-term) - Background

TCF21 encodes a transcription factor of the basic helix-loop-helix family. The TCF21 product is mesoderm specific, and expressed in embryonic epicardium, mesenchyme-derived tissues of lung, gut, gonad, and both mesenchymal and glomerular epithelial cells in the kidney. Two transcript variants encoding the same protein have been found for this gene.

TCF21 Antibody (C-term) - References

Jugessur, A., et al. PLoS ONE 5 (7), E11493 (2010) :
Vieira, A.R., et al. Genet. Med. 10(9):668-674(2008)
Melzer, D., et al. PLoS Genet. 4 (5), E1000072 (2008) :

Smith, L.T., et al. Proc. Natl. Acad. Sci. U.S.A. 103(4):982-987(2006)

Colland, F., et al. Genome Res. 14(7):1324-1332(2004)

TCF21 Antibody (C-term) - Citations

- [Down-regulation of TCF21 by hypermethylation induces cell proliferation, migration and invasion in colorectal cancer.](#)