

ARL17P1 Antibody (Center)
Affinity Purified Rabbit Polyclonal Antibody (Pab)
Catalog # AP11597c**Specification**

ARL17P1 Antibody (Center) - Product Information

Application	WB, IHC-P, FC,E
Primary Accession	Q8IVW1
Other Accession	NP_001096624.1 , NP_057716.2
Reactivity	Human
Host	Rabbit
Clonality	Polyclonal
Isotype	Rabbit IgG
Calculated MW	19388
Antigen Region	102-130

ARL17P1 Antibody (Center) - Additional Information

Gene ID 100506084;100996709;51326

Other Names

ADP-ribosylation factor-like protein 17, ADP-ribosylation factor 7 variant, ARL17A, ARL17P1

Target/Specificity

This ARL17P1 antibody is generated from rabbits immunized with a KLH conjugated synthetic peptide between 102-130 amino acids from the Central region of human ARL17P1.

Dilution

WB~~1:1000
IHC-P~~1:50~100
FC~~1:10~50

Format

Purified polyclonal antibody supplied in PBS with 0.09% (W/V) sodium azide. This antibody is purified through a protein A column, followed by peptide affinity purification.

Storage

Maintain refrigerated at 2-8°C for up to 2 weeks. For long term storage store at -20°C in small aliquots to prevent freeze-thaw cycles.

Precautions

ARL17P1 Antibody (Center) is for research use only and not for use in diagnostic or therapeutic procedures.

ARL17P1 Antibody (Center) - Protein Information

Name ARL17A

Synonyms ARL17P1

Function GTP-binding protein that functions as an allosteric activator of the cholera toxin catalytic subunit, an ADP-ribosyltransferase. Involved in protein trafficking; may modulate vesicle budding and uncoating within the Golgi apparatus (By similarity).

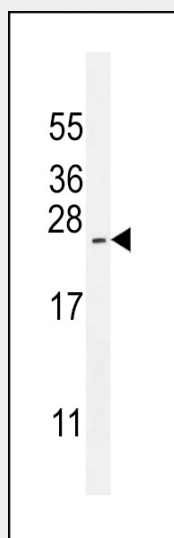
Cellular Location

Golgi apparatus.

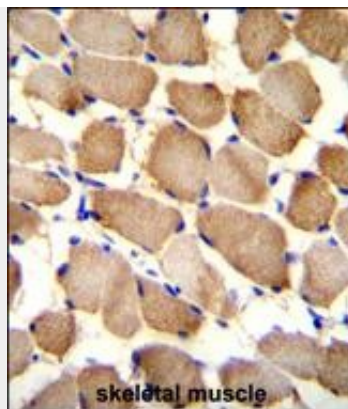
ARL17P1 Antibody (Center) - Protocols

Provided below are standard protocols that you may find useful for product applications.

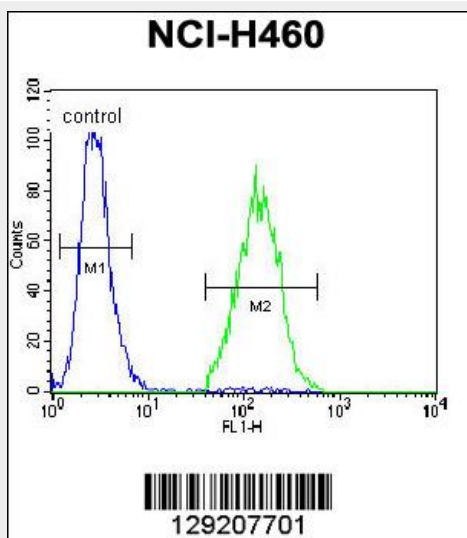
- [Western Blot](#)
- [Blocking Peptides](#)
- [Dot Blot](#)
- [Immunohistochemistry](#)
- [Immunofluorescence](#)
- [Immunoprecipitation](#)
- [Flow Cytometry](#)
- [Cell Culture](#)

ARL17P1 Antibody (Center) - Images

ARL17P1 Antibody (Center) (Cat. #AP11597c) western blot analysis in NCI-H460 cell line lysates (35ug/lane). This demonstrates the ARL17P1 antibody detected the ARL17P1 protein (arrow).



ARL17P1 Antibody (Center) (Cat. #AP11597c) immunohistochemistry analysis in formalin fixed and paraffin embedded human skeletal muscle followed by peroxidase conjugation of the secondary antibody and DAB staining. This data demonstrates the use of ARL17P1 Antibody (Center) for immunohistochemistry. Clinical relevance has not been evaluated.



ARL17P1 Antibody (Center) (Cat. #AP11597c) flow cytometric analysis of NCI-H460 cells (right histogram) compared to a negative control cell (left histogram). FITC-conjugated goat-anti-rabbit secondary antibodies were used for the analysis.

ARL17P1 Antibody (Center) - Background

GTP-binding protein that functions as an allosteric activator of the cholera toxin catalytic subunit, an ADP-ribosyltransferase. Involved in protein trafficking; may modulate vesicle budding and uncoating within the Golgi apparatus (By similarity).

ARL17P1 Antibody (Center) - References

Gerhard, D.S., et al. Genome Res. 14 (10B), 2121-2127 (2004) :
Strausberg, R.L., et al. Proc. Natl. Acad. Sci. U.S.A. 99(26):16899-16903(2002)